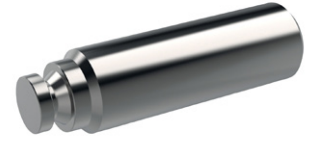


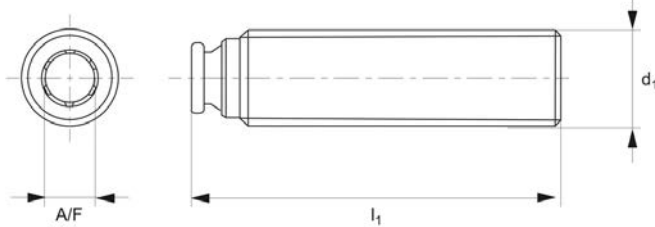


Replacement Clamping Screw for 10588 clamps

Standard
Manual Clam-



10588.7



Material

Steel, tempered and burnished.

Order No.	Size	d ₁	l ₁	A/F	Weight g
10588.W0823	22	M12	43	6	30
10588.W0830	30	M16	62	8	80
10588.W0832	32	M16	55	8	70
10588.W0840	40	M20	65	10	128
10588.W0843	43	M20	78	10	165
10558.W0849	49	M24	93	12	275