

10658

ADJUSTABLE VERTICAL CLAMPS

Material

Aluminium body, steel arm and screw.
Aluminium clamp thrust product.

Technical Notes

The only clamp specially designed for

electro-discharge (EDM) machines. The body has a large opening to ensure free flow of fluid.

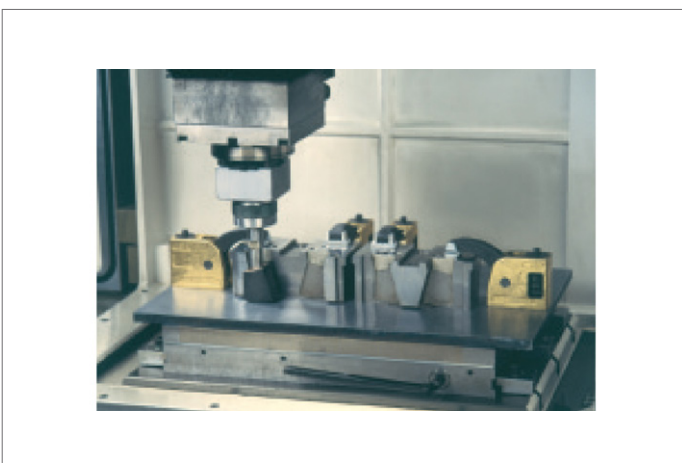
These clamps are easily disassembled without tools, cleaned, greased and re-

assembled.

Important Notes

Supplied with clamping key and clamping screw (M8 x 30mm) for mounting to machine bed.

Order No.	Arm type	Clamp reach l_1	Clamping force kN max.	Clamping height h_1 min. max.	h_2	h_3	l_2	l_3	r_1	w_1	w_2	A/F	Torque to Nm max.
10658.W0022	Short	54	6	-15 to 58	62.5	31	73	11	r 76	32	16	8	80
10658.W0023	Long	100	4	-40 to 90	62.5	31	73	11	r122	32	16	8	30





A Wide Range of Clamps to Match any Requirement

CLAMPING FORCE
**UPTO
50000
NEWTONS**

10650 All machining operations



**16000
NEWTONS**

10655 Light machining



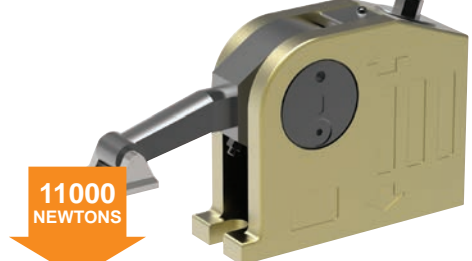
**6500
NEWTONS**

10658 Electrical discharge machining



**6500
NEWTONS**

10660 Clamping and lifting



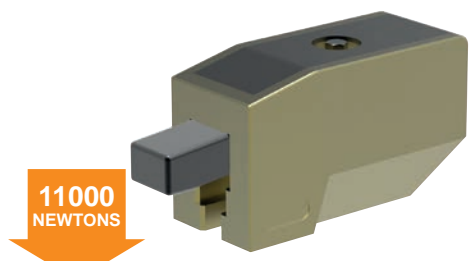
**11000
NEWTONS**

10661 Heavy machining



**40000
NEWTONS**

10670 Repetitive machining



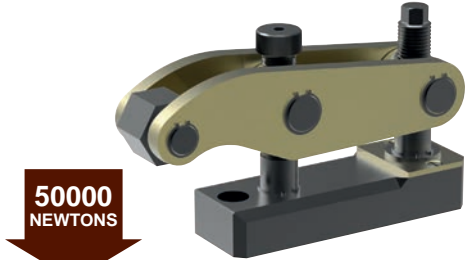
**11000
NEWTONS**

10675 Heavy machining



**35000
NEWTONS**

10678 Press Tool Clamping



**50000
NEWTONS**

ADJUSTABLE VERTICAL CLAMPS

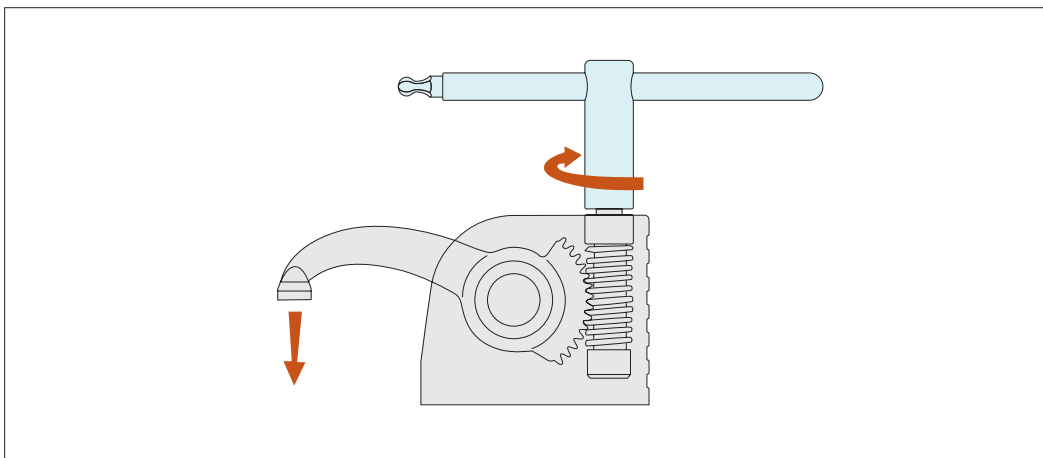


Monobloc Clamps

stackable vertical clamping

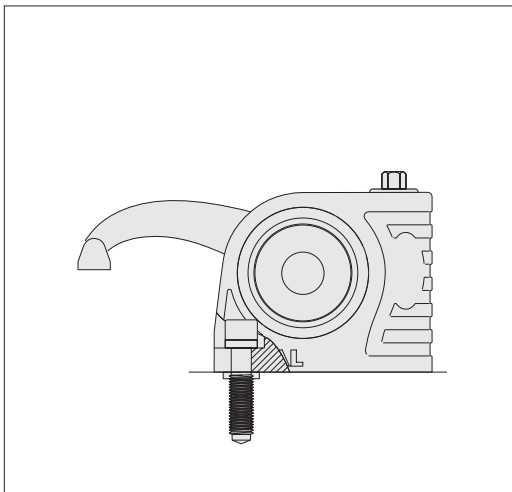


Clamping & Height Setting

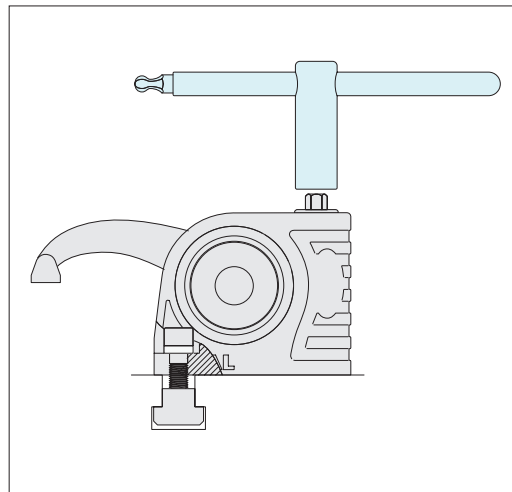


Slide the T-nut into the T-slot position and tighten the clamp onto the T-slot base, with the aid of the clamp key (shown in the image in blue).

Clamp the workpiece by twisting the key. Start machining.

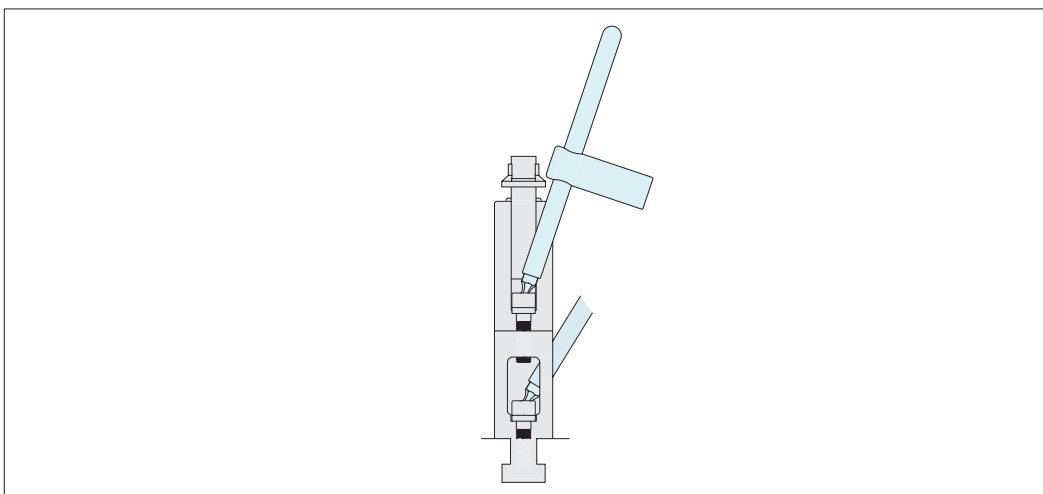


Fix to threaded bases with a special screw M10, M12, M14, M16.



Fix to T-slots with suitable T-nuts.

When unclamped the arm and the clamp remain in position



The clamps are easily stackable to achieve required clamping height.

ADJUSTABLE VERTICAL CLAMPS