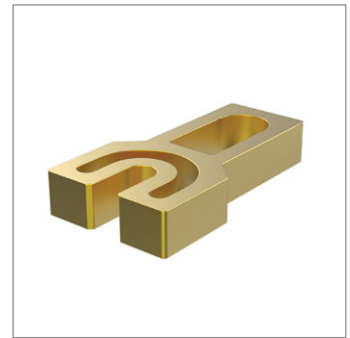
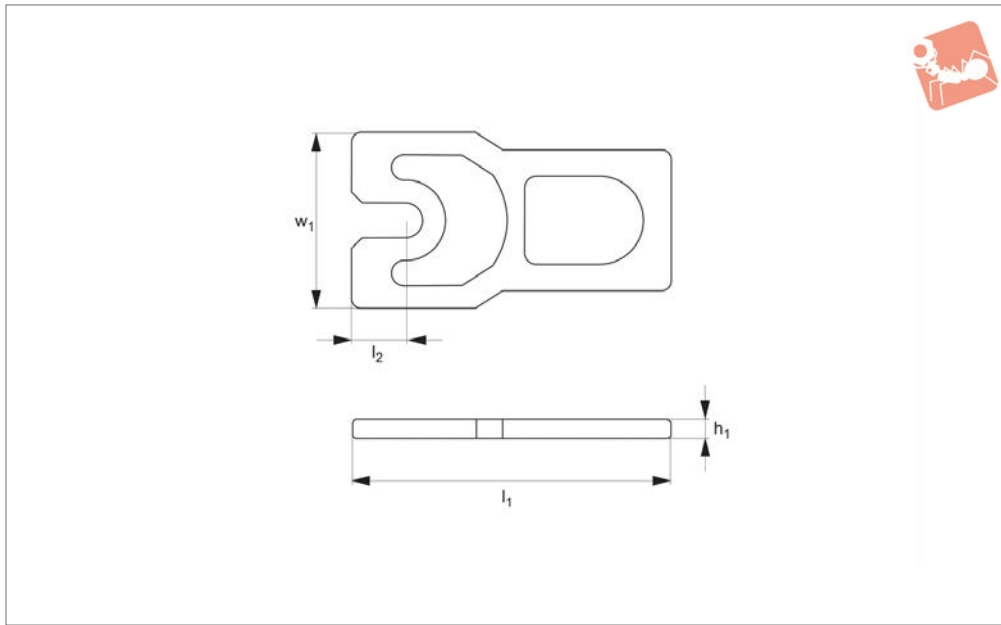




Spacer Elements

for retractable arm clamp 10670

Adjustable Vertical Clamps



10671

ADJUSTABLE VERTICAL CLAMPS

Material

Aluminium.

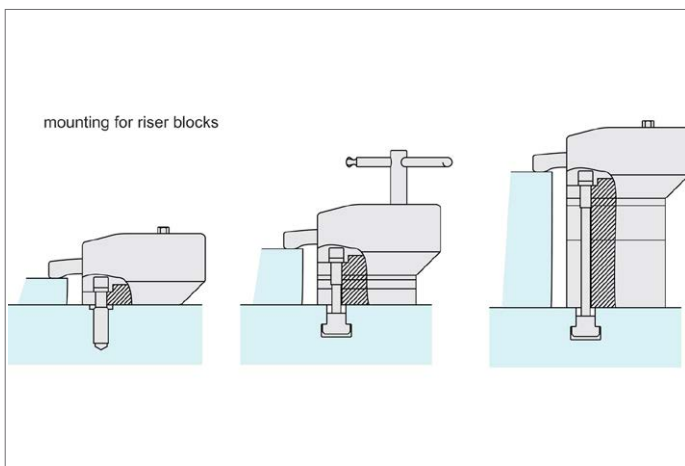
thicknesses. Suitable mounting screws also supplied. For use with clamp 10670.

Technical Notes

Supplied as set of six different spacer

Can reach a maximum clamping height of 126mm.

Order No.	Type	h_1	l_1	l_2	w_1
10671.W0080	Set of 6	2, 4, 8, 16, 32 and 64	92	18	50





A Wide Range of Clamps to Match any Requirement

CLAMPING FORCE
**UPTO
50000
NEWTONS**

10650 All machining operations



**16000
NEWTONS**

10655 Light machining



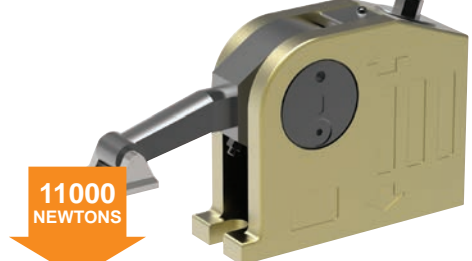
**6500
NEWTONS**

10658 Electrical discharge machining



**6500
NEWTONS**

10660 Clamping and lifting



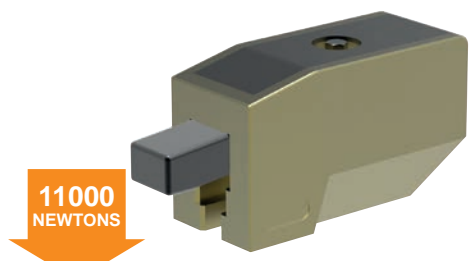
**11000
NEWTONS**

10661 Heavy machining



**40000
NEWTONS**

10670 Repetitive machining



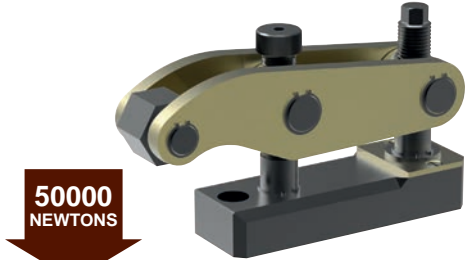
**11000
NEWTONS**

10675 Heavy machining



**35000
NEWTONS**

10678 Press Tool Clamping



**50000
NEWTONS**

ADJUSTABLE VERTICAL CLAMPS

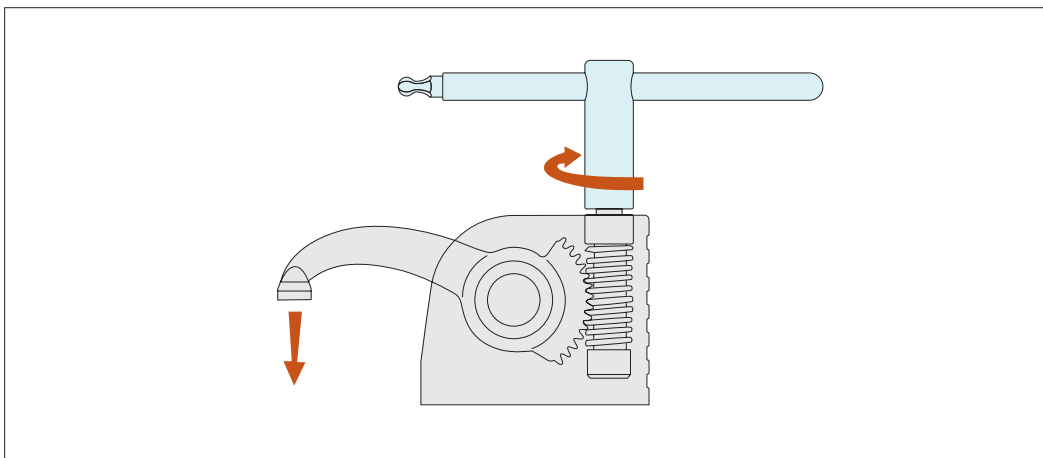


Monobloc Clamps

stackable vertical clamping

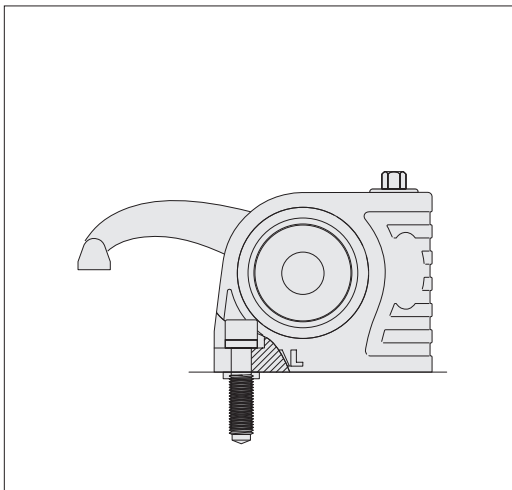


Clamping & Height Setting

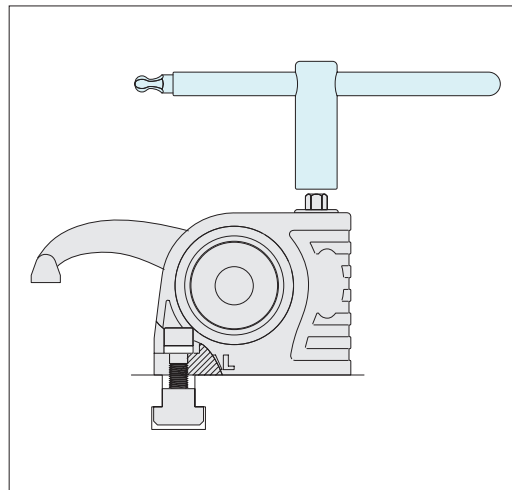


Slide the T-nut into the T-slot position and tighten the clamp onto the T-slot base, with the aid of the clamp key (shown in the image in blue).

Clamp the workpiece by twisting the key. Start machining.

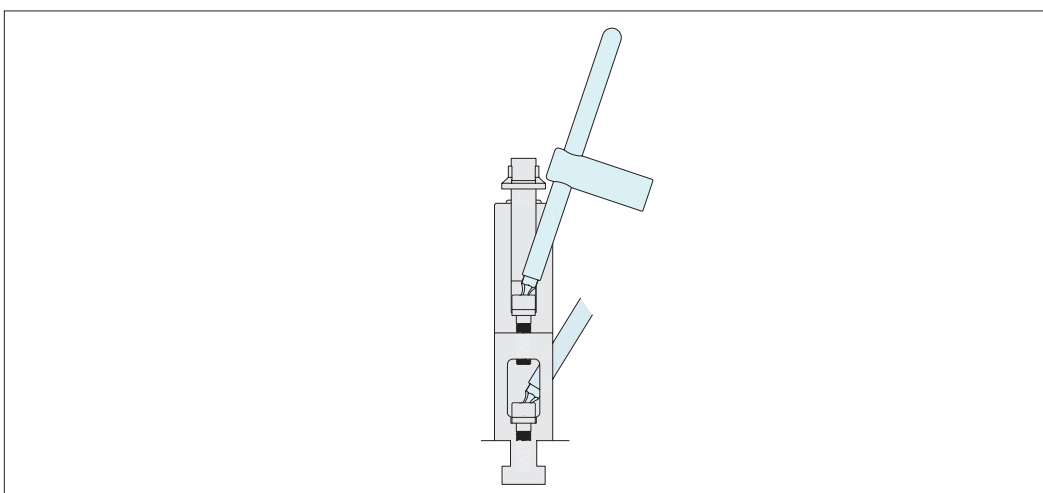


Fix to threaded bases with a special screw M10, M12, M14, M16.



Fix to T-slots with suitable T-nuts.

When unclamped the arm and the clamp remain in position



The clamps are easily stackable to achieve required clamping height.

ADJUSTABLE VERTICAL CLAMPS