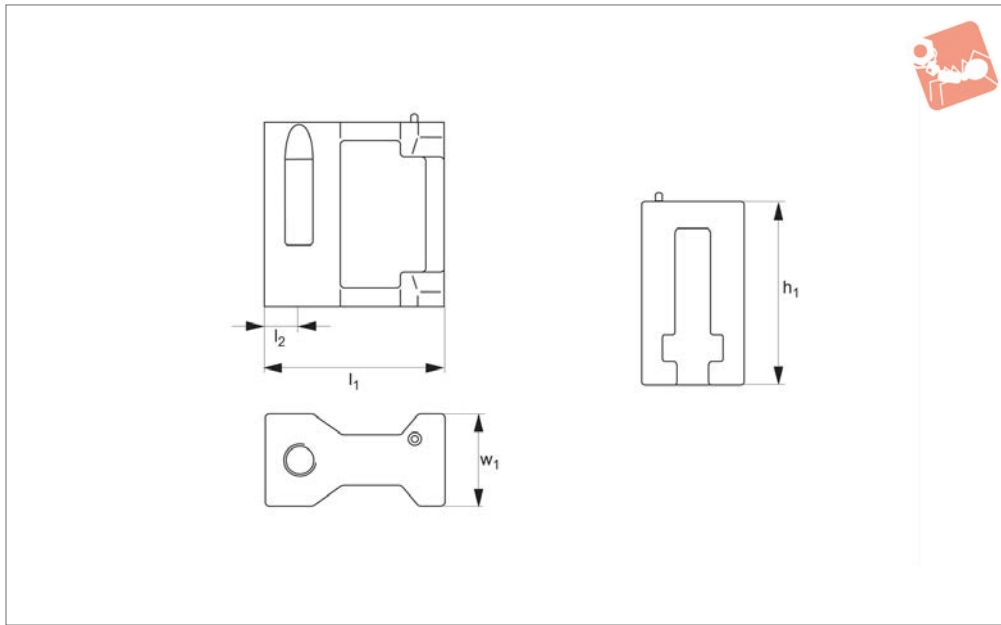




Maxi Bloc Spacer Elements

for Maxi Bloc clamps 10675

Adjustable Vertical Clamps



10676

ADJUSTABLE VERTICAL CLAMPS

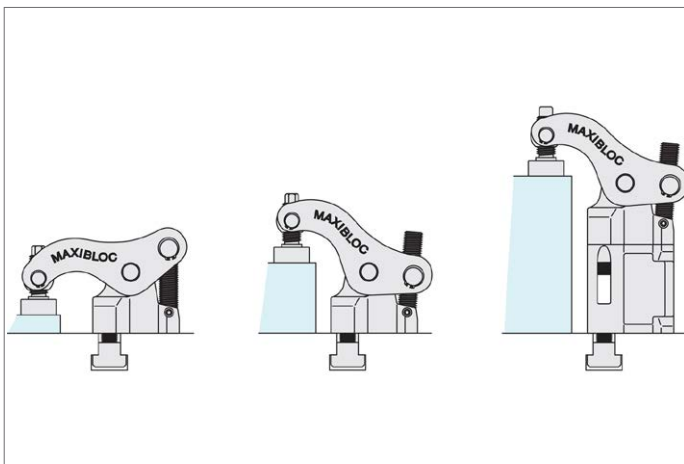
Material
Steel.

Technical Notes

Quick and easy clamping of different clam-

ping heights. For use with Maxi Bloc clamping system part no. 10675. Supplied with M14 mounting screw.

Order No.	Type	h_1	l_1	l_2	w_1
10676.W0320	Spacer	80	78	15	40





A Wide Range of Clamps to Match any Requirement

CLAMPING FORCE
**UPTO
50000
NEWTONS**

10650 All machining operations



**16000
NEWTONS**

10655 Light machining



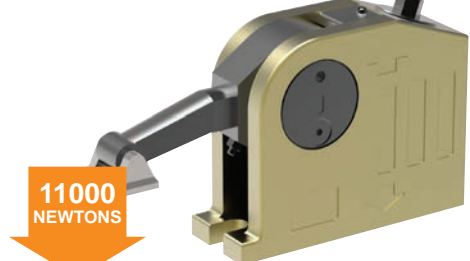
**6500
NEWTONS**

10658 Electrical discharge machining



**6500
NEWTONS**

10660 Clamping and lifting



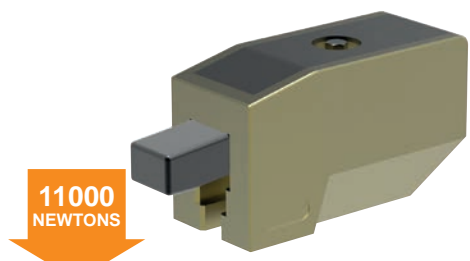
**11000
NEWTONS**

10661 Heavy machining



**40000
NEWTONS**

10670 Repetitive machining



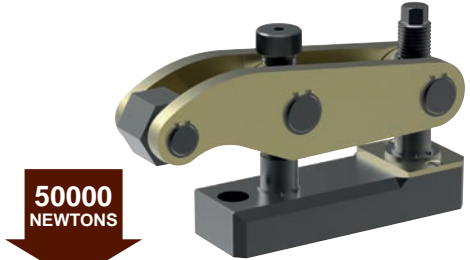
**11000
NEWTONS**

10675 Heavy machining



**35000
NEWTONS**

10678 Press Tool Clamping



**50000
NEWTONS**

ADJUSTABLE VERTICAL CLAMPS

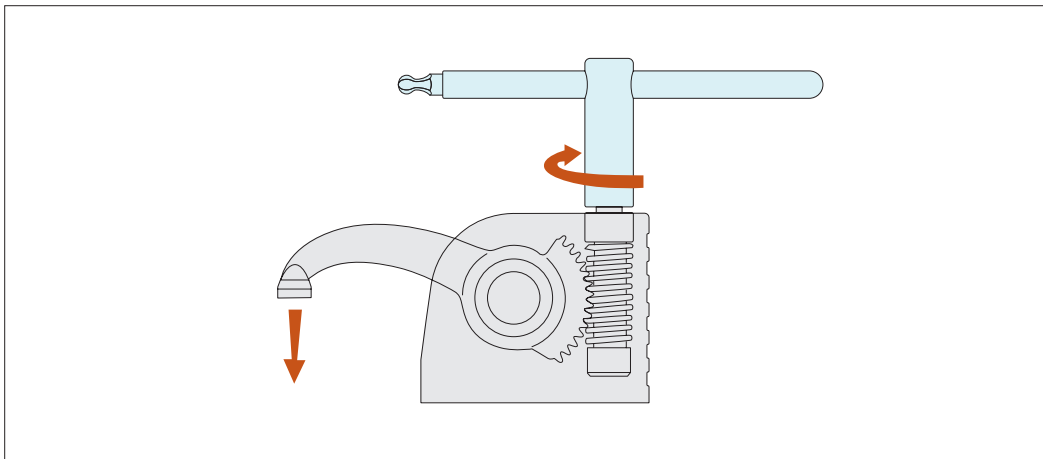


Monobloc Clamps

stackable vertical clamping

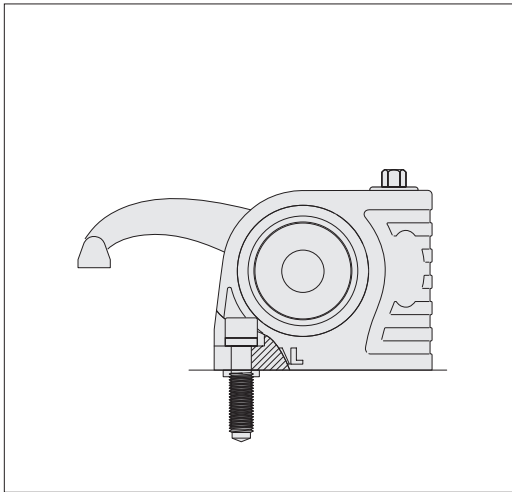


Clamping & Height Setting

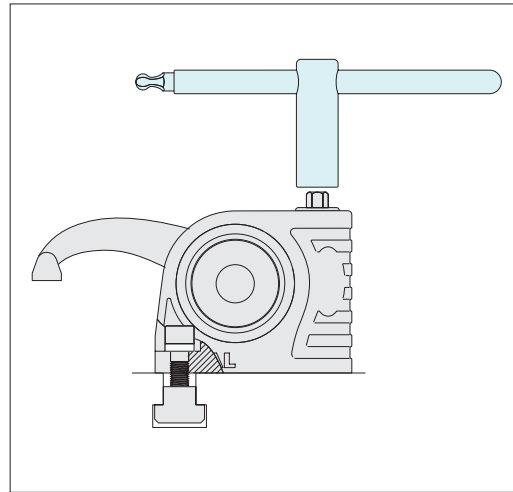


Slide the T-nut into the T-slot position and tighten the clamp onto the T-slot base, with the aid of the clamp key (shown in the image in blue).

Clamp the workpiece by twisting the key. Start machining.

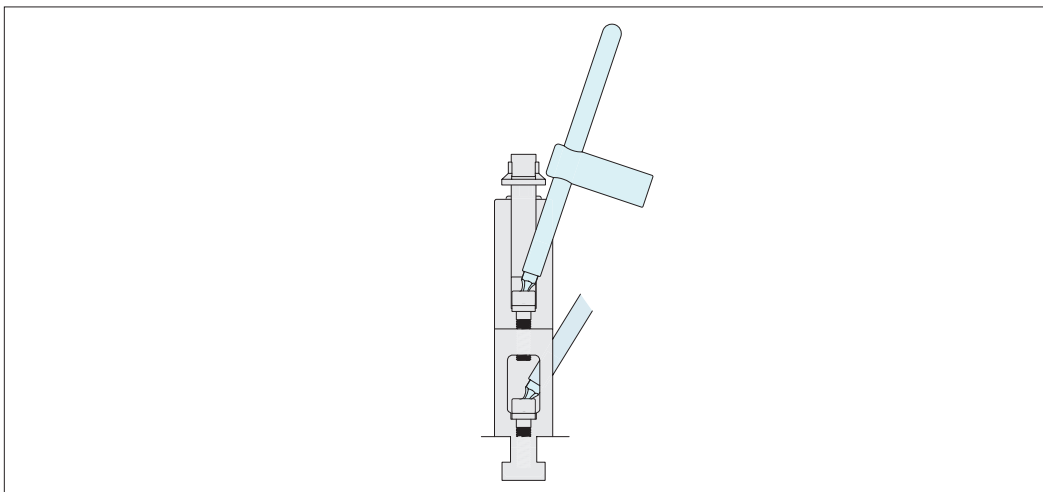


Fix to threaded bases with a special screw M10, M12, M14, M16.



Fix to T-slots with suitable T-nuts.

When unclamped the arm and the clamp remain in position



The clamps are easily stackable to achieve required clamping height.

ADJUSTABLE VERTICAL CLAMPS

ov-W10650-A-T-stackable-clamps-rmh - Updated - 20-10-2022