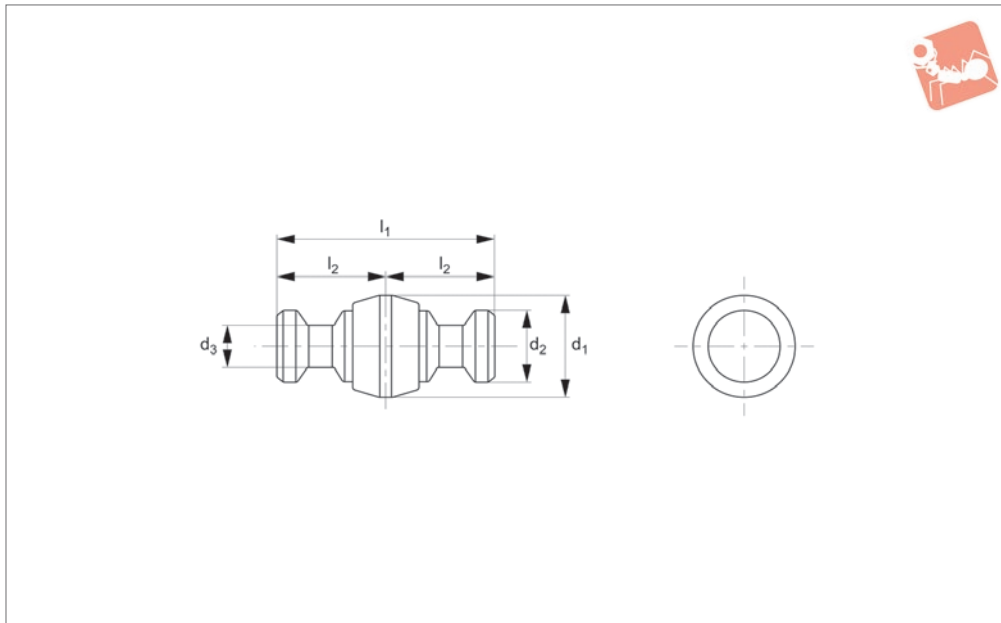
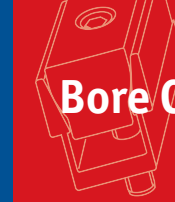




Tapered Clamping Screws - Double floating

Bore Clamping



12047.2

BORE CLAMPING

Material

Bushing: steel (C45E), black oxide finish, precision ground.

Technical Notes

Can be used to couple double clamping modules (see part no.12044) together for

greater height.

Locating repeatability $\pm 0,2\text{mm}$.

Order No.	l_1	Suitable clamping module 12044	Type	Size	d_1	d_2	d_3	l_2	Weight g
12047.W0011	33	11	Floating	11	15.5	11	6.5	16.5	24
12047.W0016	50	16	Floating	16	24.5	16	9.5	25.0	85
12047.W0021	66	21	Floating	21	31.5	21	13.0	33.0	190