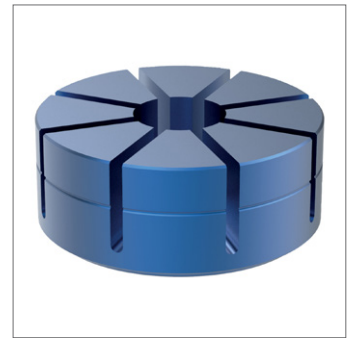
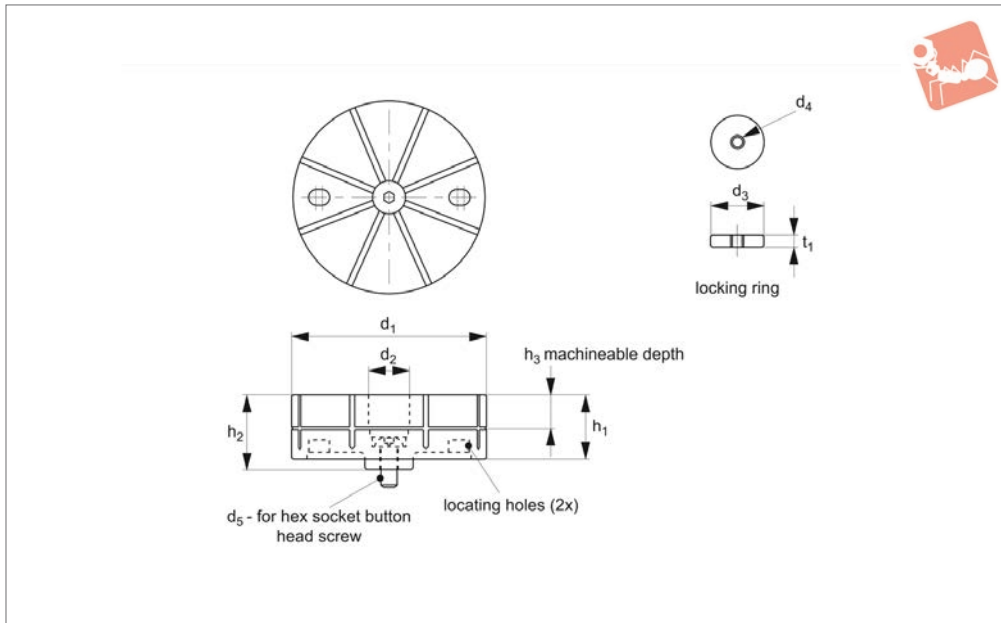
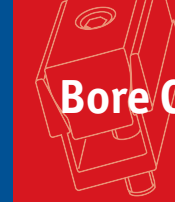




External Form Holding Jaws

for flexible form holding clamp no. 12055

Bore Clamping



12056

BORE CLAMPING

Material

Jaws: aluminium (A7075), silver anodised.
Locating ring: steel (C45E), tempered, nickel plated.

Ideal for die-cast and extruded parts.

Used with flexible form clamping base no. 12055.

Supplied with O-ring, locking ring and socket button head screw to assist during machining of form.

Technical Notes

Offers 0,15mm clamping stroke on jaw.

Order No.	h_1	h_2	h_3	Suitable for clamping base 12055	Type	Size	d_1	d_2	d_3	d_4	d_5	t_1	Weight g
12056.W0065	26	25	10	.W0065	Jaw	65	65	21	20	M 5x0,80	M 8x20	4	200
12056.W0090	40	35	15	.W0090	Jaw	90	90	25	24	M 6x1,00	M 10x25	5	500
12056.W0120	46	40	20	.W0120	Jaw	120	120	25	24	M 6x1,00	M 10x25	5	1100
12056.W0160	52	45	25	.W0190	Jaw	160	160	29	28	M 8x1,25	M 12x25	6	2200

