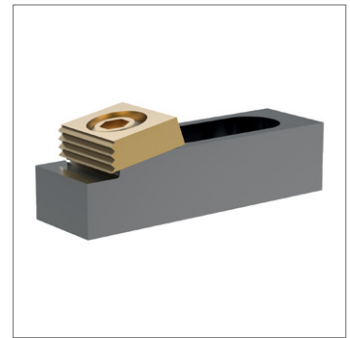
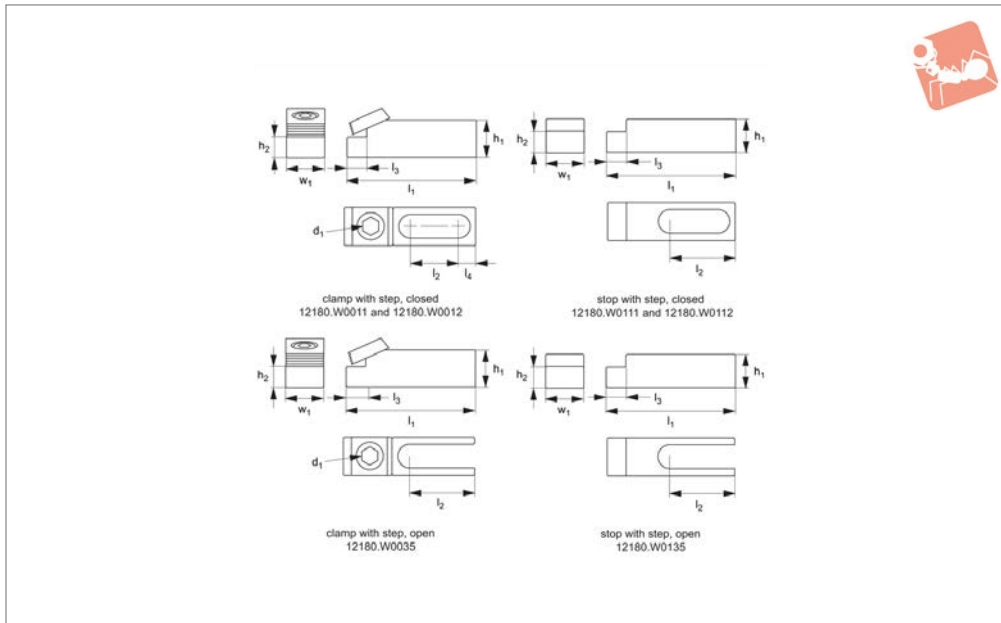




Multi-Fixture Clamps and Stops with locating step

Low Profile Side Clamping



12180.1

LOW PROFILE SIDE CLAMPING

Material

Body: steel, hardened.
Clamp: brass.

threaded holes and in T-slots. Can be mounted vertically or horizontally. Typically used as a clamp and stop pair - please order separately.

Technical Notes

Enables flexible setups. For use in both

Order No.	Type	Slot type	Mounting screw	d ₁ cam screw	l ₁	l ₂	l ₃	l ₄	h ₁	h ₂ +0.0 -0.013	w ₁	Torque to Nm max.	Stroke	For use with	Holding force kN
12180.W0011	Clamp - With Step Closed	Closed	M 8	M 8	63,5	21,1	8,0	13,5	15,8	11,68	19,1	28	1,6	12180.W0111	8,9
12180.W0012	Clamp - With Step Closed	Closed	M12	M12	95,3	42,7	9,4	12,7	15,8	12,19	28,5	88	2,0	12180.W0112	17,8
12180.W0035	Clamp - With Step Open	Open	M16	M16	107,0	46,2	9,4		41,2	35,0	38,1	135	2,5	12180.W0135	26,7
12180.W0111	Stop - With Step Closed	Closed	M 8		63,5	28,2	8,0	13,5	19,1	11,68	19,1			12180.W0011	
12180.W0112	Stop - With Step Closed	Closed	M12		95,3	42,7	9,4	12,7	22,1	12,19	28,5			12180.W0012	
12180.W0135	Stop - With Step Open	Open	M16		107,0	46,2	9,4		50,8	35,0	38,1			12180.W0035	

