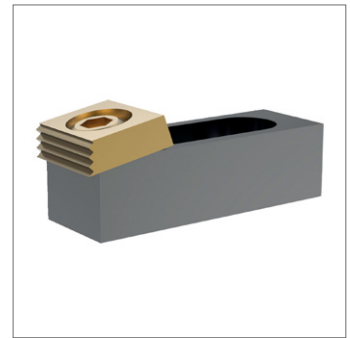
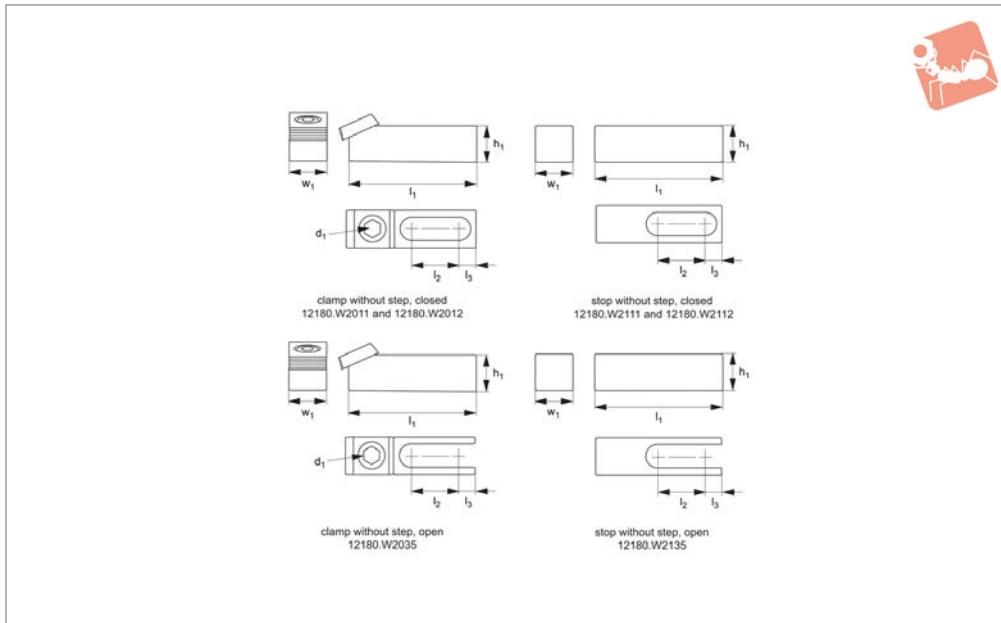




# Multi-Fixture Clamps and Stops without locating step

## Low Profile Side Clamping



### 12180.2

LOW PROFILE SIDE CLAMPING

#### Material

Body: steel, hardened.  
Clamp: brass.

threaded holes and in T-slots. Can be mounted vertically or horizontally. Typically used as a clamp and stop pair - please order separately.

#### Technical Notes

Enables flexible setups. For use in both

Order No.	Type	Slot type	Mounting screw	Cam screw $d_1$	$l_1$	$l_2$	$l_3$	$h_1$	$w_1$	Torque to Stroke Nm max.	For use with	Holding force kN	
<b>12180.W2011</b>	Clamp - w/o Step	Closed	M 8	M 8	54,9	21,1	13,5	15,8	19,1	28	1,6	12180.W2111	8,9
<b>12180.W2012</b>	Clamp - w/o Step	Closed	M12	M12	58,6	42,7	12,7	15,8	28,5	88	2,0	12180.W2112	17,8
<b>12180.W2035</b>	Clamp - w/o Step	Open	M16	M16	96,5	46,2		41,2	38,1	135	2,5	12180.W2135	26,7
<b>12180.W2111</b>	Stop - w/o Step	Closed			55,9	28,2	13,5	19,1	19,1			12180.W2011	
<b>12180.W2112</b>	Stop - w/o Step	Closed			83,5	42,7	12,7	22,1	28,5			12180.W2012	
<b>12180.W2135</b>	Stop - w/o Step	Open			83,8	46,2		50,8	38,1			12180.W2035	

