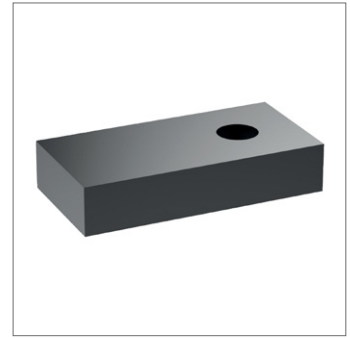
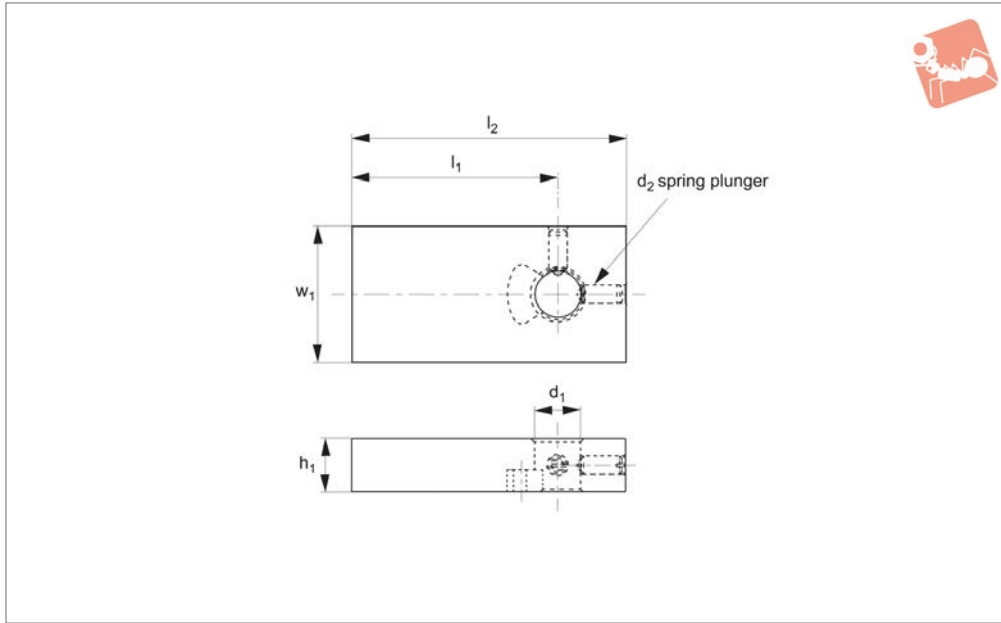




Machineable Clamp Arms

for use with 12564.W0030 - .W0141

Adjustable Vertical Clamps



12564.2

ADJUSTABLE VERTICAL CLAMPS

Material

Steel (C45), black oxide finish.

Clamping force and strain during clamping denote values gained when the maximum allowable load is applied to the handle.

Technical Notes

Clamp arm length denotes l_1 dimensions.

Order No.	h_1	l_1	l_2	d_1	d_2	w_1	To suit clamp 12564	Weight of clamping prd. g max.	Weight g
12564.W0430	12	45	60	10	M 4	30	.W003x and .W013x	100	150
12564.W0440	16	55	75	16	M 5	40	.W004x and .W014x	100	330

