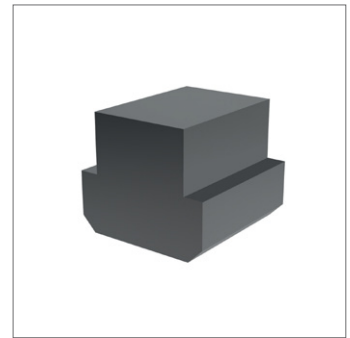
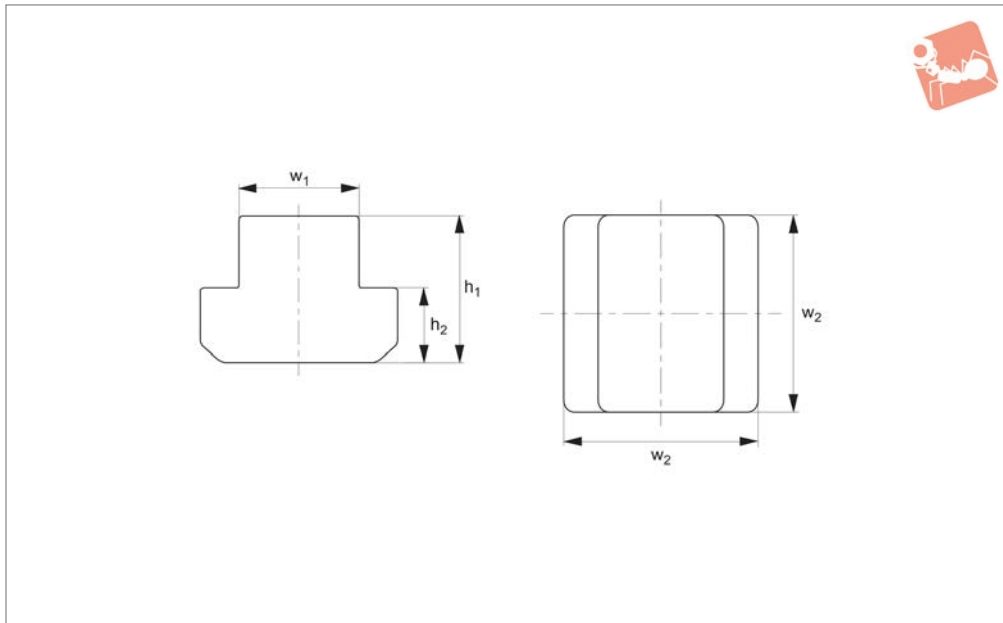




# T-Nuts - Semi Finished

strength class 10

## T-Nuts & T-Bolts



**24160**

T-NUTS & T-BOLTS

### Material

Carbon steel, 0,35 - 0,45%C.

### Technical Notes

DIN 508.

After machining thread, heat treat to

tensile strength class 10. Heat to 880°C for 45 minutes, quench in oil at 75°C and temper at 550°C for two hours.

Please note T-nuts are square, length and width are both equal to dimension  $w_2$ .

### Tips

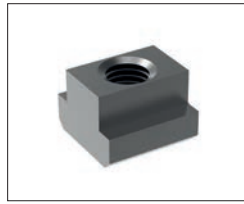
Useful for machining unusual thread sizes or imperial threads.

Order No.	T-slot size	$w_1$	$w_2$	$h_1$	$h_2$	Weight g
24160.W0060	6	5.7	10	8	4	4
24160.W0080	8	7.7	13	10	6	10
24160.W0100	10	9.7	15	12	6	16
24160.W0120	12	11.7	18	14	7	27
24160.W0140	14	13.7	22	16	8	50
24160.W0160	16	15.7	25	18	9	70
24160.W0180	18	17.7	28	20	10	95
24160.W0200	20	19.7	32	24	12	150
24160.W0220	22	21.7	35	28	14	210
24160.W0240	24	23.7	40	32	16	300
24160.W0280	28	27.7	44	36	18	430
24160.W0320	32	31.7	50	40	20	630
24160.W0360	36	35.6	54	44	22	800
24160.W0420	42	41.6	65	52	26	1400
24160.W0480	48	47.6	75	60	30	2100
24160.W0540	54	53.6	85	70	34	3150

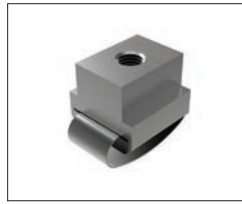


**Nuts**

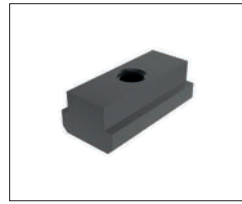
Available in heat treated steel, unless stated otherwise.



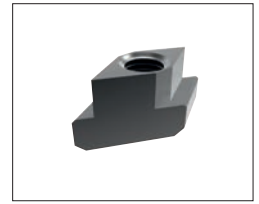
**24000** T-Nut, Strength Class 10 DIN 508.



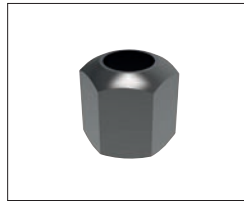
**24010** T-Nut with Anti-Slip Device.



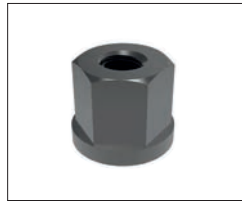
**24100** Extended T-Nut. Strength Class 10.



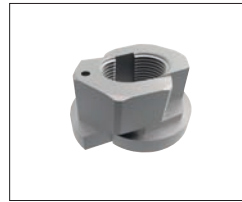
**24120** Rhombus T-Nuts



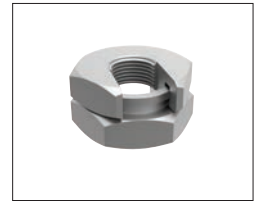
**24300** Fixture Nuts. Strength Class 10 - DIN 6330B



**24400** Collar Nuts, DIN 6331



**24502** Fast Nut - With Collar Rapid Assembly Nut



**24520 - Steel** Slip-On Lock Nuts - Rapid Assembly Nut.



**24600** Extension Nuts Strength Class 10.



**24620** Swivel Nuts, Conical Seat

**Washers**

Available in a range of steel types - see product for details.



**25000** - Hardened Steel - Plain Washers. DIN 6340.



**25100** - Case Hardened Steel - Spherical Seat Washers. Type C - DIN 6319C.



**25400** - Case Hardened Steel - Dished Washers, Type D - DIN 6319D.



**25700** - Tempered Steel - Dished Washers, Type G - DIN 6319G.



**25900** - Stainless Steel Compact Spherical Washer, Conical Seat, similar to DIN6319