

## 25700

WASHERS

### Material

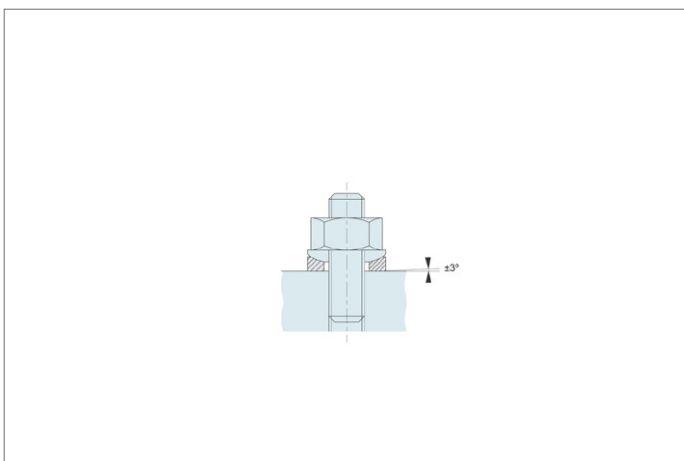
Steel, punched, trued and tempered.

Their large diameter makes them suitable to bridge the slots of clamps.

### Technical Notes

Produced to DIN 6319G.

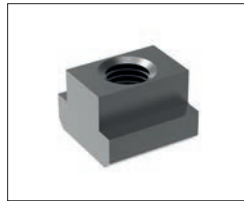
Order No.	For metric thread $d_1$	For thread $d_1$ inch	$d_2$ tol. H13	$d_3$	$d_4$	$h_1$	Load capacity for static load kN max.	With 25100 $h_2$	Weight g
25700.W0106	M 6	1/4"	7.1	17	11.0	4	9	5.4	6
25700.W0108	M 8	5/16"	9.6	24	14.5	5	17	7.1	13
25700.W0110	M10	3/8"	12.0	30	18.5	5	26	7.3	19
25700.W0112	M12	1/2"	14.2	36	20.0	6	38	9.0	32
25700.W0114	M14	-	16.5	40	24.8	6	53	9.5	48
25700.W0116	M16	5/8"	19.0	44	26.0	7	73	10.4	56
25700.W0120	M20	3/4"	23.2	50	31.0	8	117	12.2	94
25700.W0124	M24	7/8"	28.0	60	37.0	10	168	15.7	169
25700.W0130	M30	1-1/8", 1-3/16"	35.0	68	49.0	12	269	19.7	230
25700.W0136	M36	1-1/4", 1-3/18"	42.0	80	60.0	12	394	-	350
25700.W0142	M42	1-1/2"	49.0	100	70.0	15	-	-	640
25700.W0148	M48	1-3/4"	56.0	108	82.0	17	-	-	830



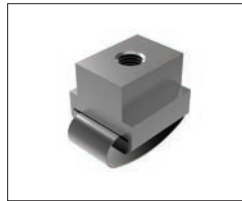


**Nuts**

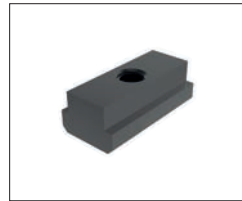
Available in heat treated steel, unless stated otherwise.



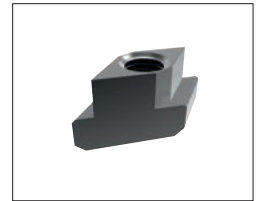
**24000** T-Nut, Strength Class 10 DIN 508.



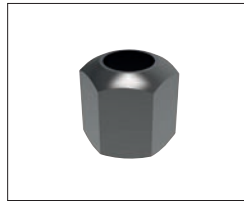
**24010** T-Nut with Anti-Slip Device.



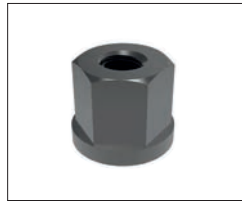
**24100** Extended T-Nut. Strength Class 10.



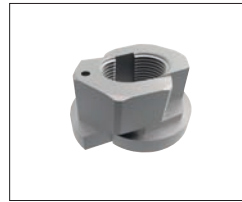
**24120** Rhombus T-Nuts



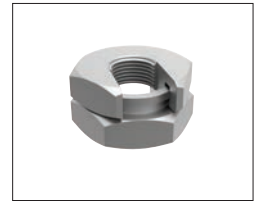
**24300** Fixture Nuts. Strength Class 10 - DIN 6330B



**24400** Collar Nuts, DIN 6331



**24502** Fast Nut - With Collar Rapid Assembly Nut



**24520 - Steel** Slip-On Lock Nuts - Rapid Assembly Nut.



**24600** Extension Nuts Strength Class 10.



**24620** Swivel Nuts, Conical Seat

**Washers**

Available in a range of steel types - see product for details.



**25000** - Hardened Steel - Plain Washers. DIN 6340.



**25100** - Case Hardened Steel - Spherical Seat Washers. Type C - DIN 6319C.



**25400** - Case Hardened Steel - Dished Washers, Type D - DIN 6319D.



**25700** - Tempered Steel - Dished Washers, Type G - DIN 6319G.



**25900** - Stainless Steel Compact Spherical Washer, Conical Seat, similar to DIN6319