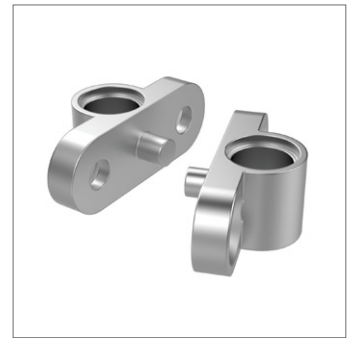
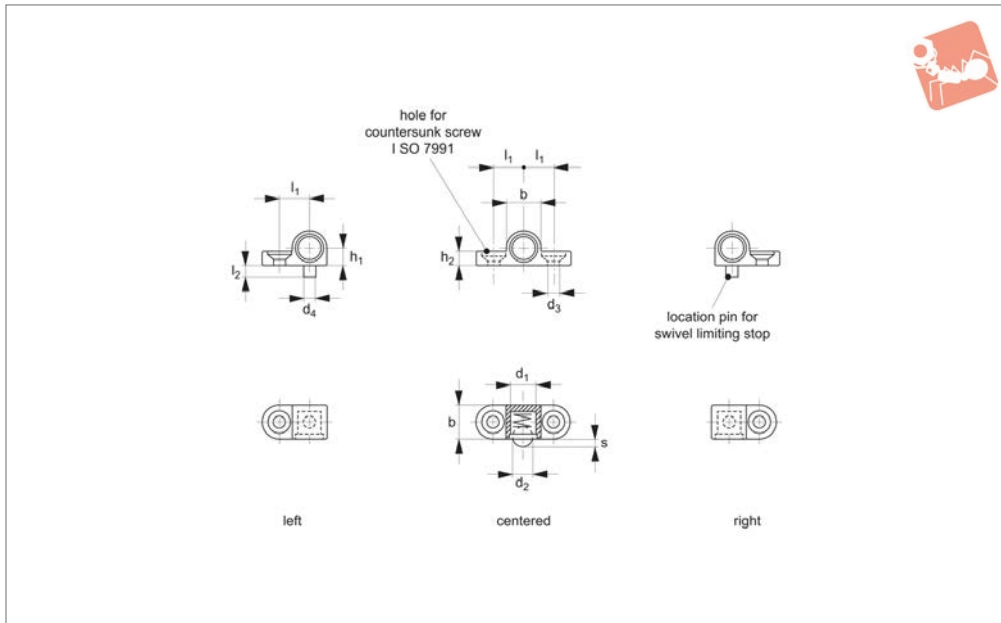




# Spring Plunger Holder

for part no. 32300

# Spring Plunger & Detent Pins



**32450**

SPRING PLUNGER & DETENT PINS

**Material**

Die-cast zinc, nickel plated.

available.

32300#26>, their small dimensions make them ideal for confined spaces.

**Technical Notes**

Left, right and centre mounting options

**Tips**

Assist in the easy mounting of smooth bodied spring plunger 32300<X\

Order No.	Type	Ball dia. plunger 32300 $d_2$	Body dia. plunger 32300 $d_1$ -0.05	$d_3$ for countersunk screw ISO 7991	$d_4$ -0.05	b	$h_1$ $\pm 0.05$	$h_2$	$l_1$ $\pm 0.05$	$l_2$	w -0.1 stroke
32450.W0006	Left	5,0	6	M 3-3,2	3	8,5	4,25	3,2	7,5	3	1,5
32450.W0008	Left	6,5	8	M 4-4,3	4	10,5	5,25	4,2	9,5	4	1,8
32450.W0016	Right	5,0	6	M 3-3,2	3	8,5	4,25	3,2	7,5	3	1,5
32450.W0018	Right	6,5	8	M 4-4,3	4	10,5	5,25	4,2	9,5	4	1,8
32450.W0026	Centered	5,0	6	M 3-3,2	3	8,5	4,25	3,2	7,5	3	1,5
32450.W0028	Centered	6,5	8	M 4-4,3	4	10,5	5,25	4,2	9,5	4	1,8