

33172

BALL LOCK PINS & QUICK RELEASE PINS

Material

Pin: stainless steel 1.4305.
Spring: stainless steel.
Finish: Black or natural.

Technical Notes

Temperature range -50°C to +150°C.

Receivers for sling swivel pins part no. 33170.

To achieve quick fastening and locking frequently repeated connections.

Type one and two: indexing at 90°.

Type three: non-indexing, 360° rotation.

Order No.	Dia. Ø nom.	Finish	For mounting in	Type	d ₁ tol. h9	d ₂ ±0.1	d ₃	d ₄	d ₅	l ₁	l ₂	l ₃	A/F	Weight g
33172.W0205	9.5	Black	Wood	One	9.6	12.65	-	4.9	-	12.65	9.65	-	-	5.6
33172.W0210	9.5	Black	Plastic	Two	9.6	12.65	-	-	10.7	12.10	9.20	11	5	3.0
33172.W0215	9.5	Black	Wood 360°	Three	9.6	13.50	11.3	4.9	-	12.65	9.65	-	-	6.5
33172.W0305	9.5	Natural	Wood	One	9.6	12.65	-	4.9	-	12.65	9.65	-	-	5.6
33172.W0310	9.5	Natural	Plastic	Two	9.6	12.65	-	-	10.7	12.10	9.20	11	5	3.0
33172.W0315	9.5	Natural	Wood 360°	Three	9.6	13.50	11.3	4.9	-	12.65	9.65	-	-	6.5



Sound Rigging Systems

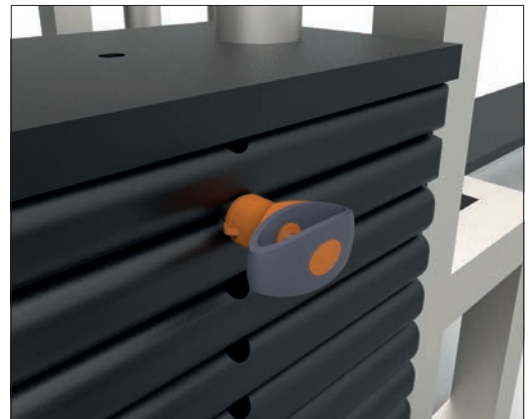
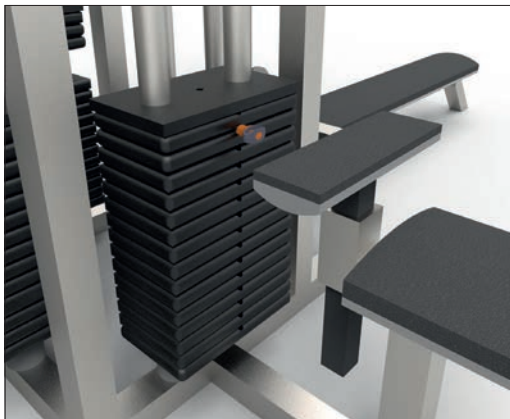
Ball lock pins on a sound rigging system. Offering secure fixing with high shear forces and easy fitting for operators at heights.

In addition full black powder coating of grip and actuation button eliminates glare from other stage lighting.

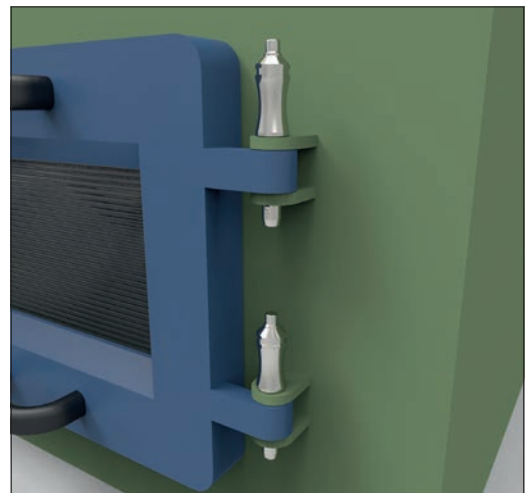
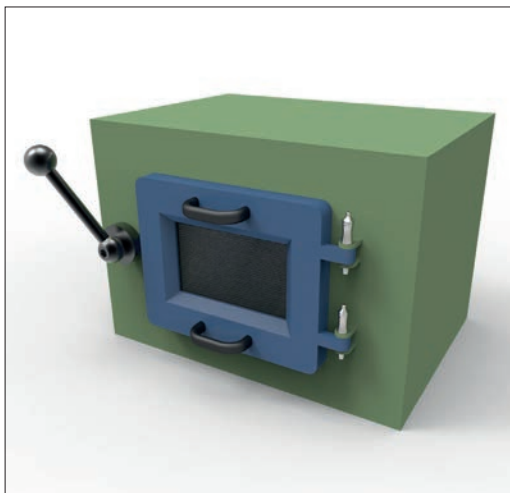


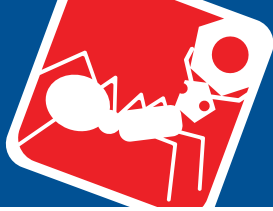
BALL LOCK PINS & QUICK RELEASE PINS

Gym Equipment



Scientific and Medical





Wixroyd Ball Lock Pins

features

33060 - 33250

Positioning Elements

BALL LOCK PINS & QUICK RELEASE PINS

1.4305 (AISI 303) - shear force approx. 60% of higher material version 1.4542

1.4542 (AISI 630) - identified by the ridge on the pin

CRES 17-4PH (AMS 5643) aviation standard



Pin Material



Plastic tri-star T-handled, metal L-handled, metal Mushroom, metal Single piece metal, contoured

Handle Style



Special plastic self-spring Adjustable grip length, plastic Key ring Safety, metal Mushroom Type B aviation Type R aviation



Stainless wire - (coated) - 2 x key ring Stainless wire - Key ring and fixing loop Plastic - 2 x cable tie Steel wire - (coated) - 2 x key ring Stainless bead chain - 2 x key ring Locating bushes

Lanyards and Locating Bushes



Press = unlock
Release = lock (standard)

Press = unlock and position
Release = lock and simultaneous clamp

Simple spring loaded balls "pullout pin"

Actuation



Important Note

Shear force

Lifting force



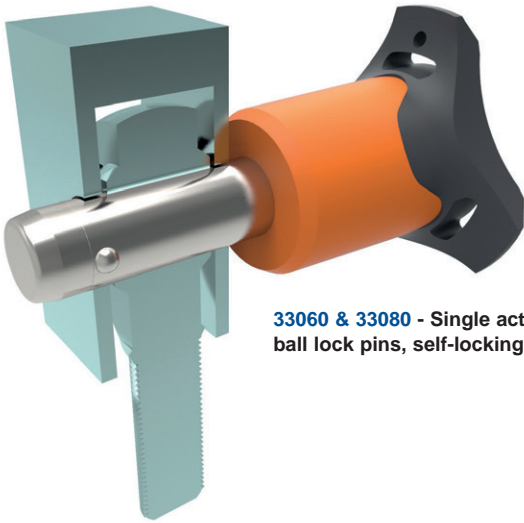
Special Variations

Variations on our standard designs are possible, please contact our sales team for technical assistance. Quick production on specials can be as little as 3 weeks.



Applications

- Positioning.
- Lifting.
- Locking.
- Indexing.
- Joining.



33060 & 33080 - Single acting ball lock pins, self-locking.



33194 - Single acting ball lock pins, self locking, simple finish.



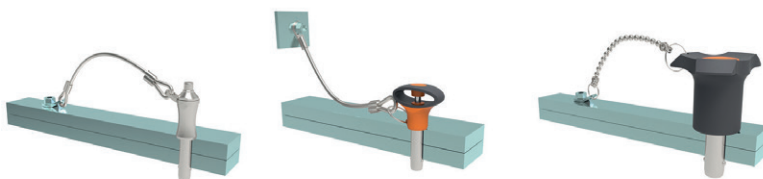
33140 - Socket pins, non-locking, spring loaded balls.



33100 - Single acting ball lock pin, self locking.



33180 - Clamping pins, with span compensation, self-locking.



33250 & 33270 - Lanyards.



33220 - Ball lock pins, single acting - L-handle