

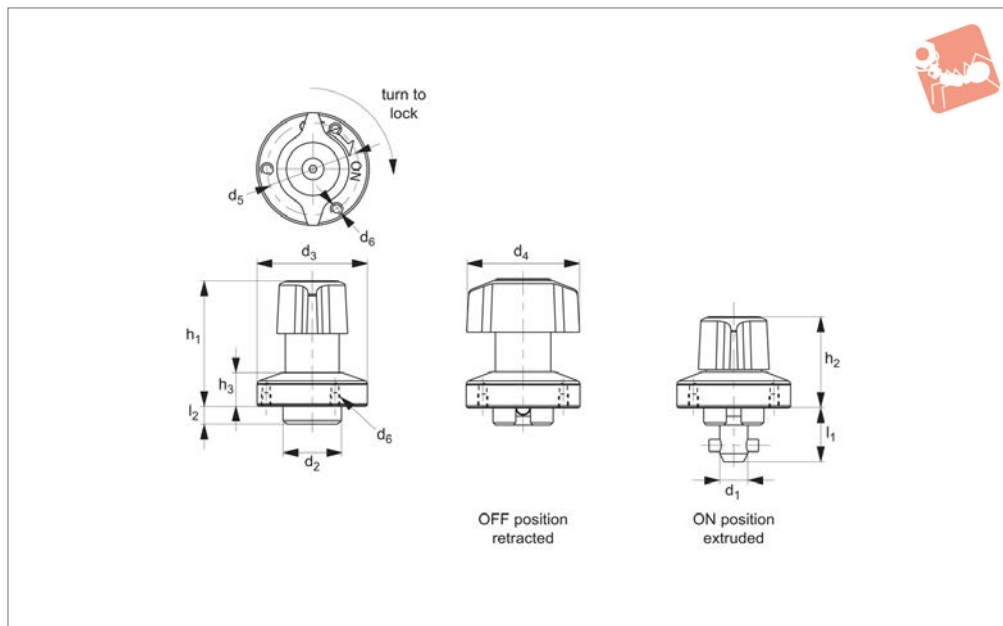


One-Touch Fastener- Cam Locking

retract - quarter turn - t-handle grip - plastic



One Touch Fasteners



33946

ONE TOUCH FASTENERS

Material

Body: steel, nickel plated.
 Shank: steel, nickel plated.
 Pin: stainless steel, SUS304.
 Knob: polyamide, black.
 Spring: stainless steel.

Technical Notes

One-touch fasteners are the ideal solution for applications requiring rapid and recurring change over of tooling or set ups. Use in applications as diverse as bottling processes, machine covers, changing of cogs and drive belts. One-touch fasteners

provide a quick, simple and secure change over solution - no time waste in unfastening screws or other permanent fixings, and no opportunity for lost fixings in your machinery.
 Temperature resistant to 130°C.

Important Notes

One-touch fastener offers full retraction of clamping shank when part is unlocked, this offer's the benefit of enabling panels to be slid into position - especially useful with larger or oversized panels, and enables its use on sliding or linear rail applications to provide positive location

and clamping of parts.

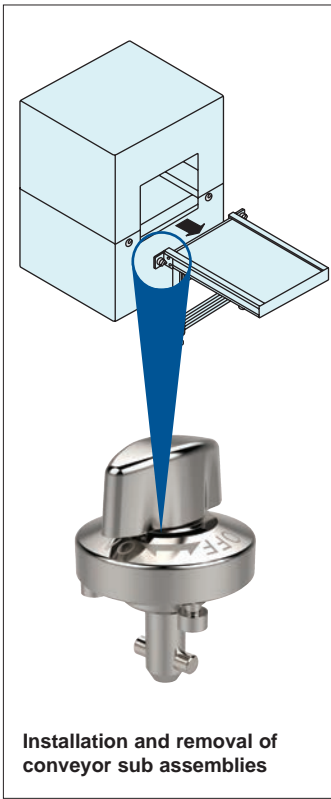
Actuation:

- Turn handle to off position, and ensure the shank is fully retracted.
- Place or slide the over in place and position over the locating bush.
- Turn handle to on position for clamping, an audible click is heard when fully clamped.
- To release, turn handle back to off position, the shank is fully retracted into clamp body assisted by the return spring.

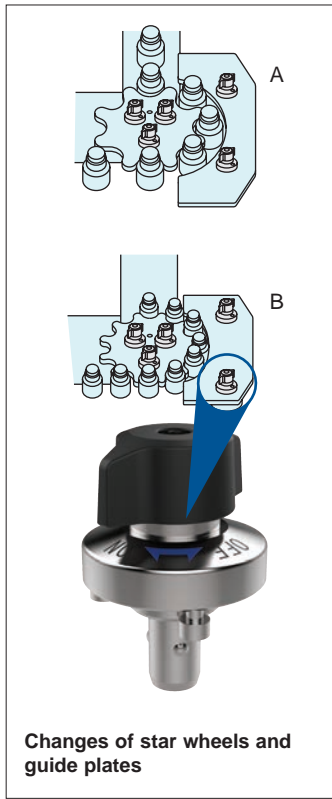
| Order No. | Single panel thickness | Clamping force N | d ₁ | d ₂ | d ₃ | d ₄ | d ₅ | d ₆ | l ₁ | l ₂ | h ₁ | h ₂ | h ₃ | Shear strength N | Tensile strength N | Weight g |
|--------------------|------------------------|------------------|----------------|----------------|----------------|----------------|----------------|----------------|----------------|----------------|----------------|----------------|----------------|------------------|--------------------|----------|
| 33946.W1005 | 6-10 | 60 | 5 | 14 | 25 | 25 | 21 | M 2x0,4 | 15,5 | 5,5 | 30 | 20,0 | 6,5 | 1800 | 1200 | 40 |
| 33946.W1408 | 6-14 | 90 | 8 | 18 | 34 | 34 | 28 | M 3x0,5 | 17,0 | 5,5 | 38 | 36,5 | 10,0 | 3200 | 400 | 100 |



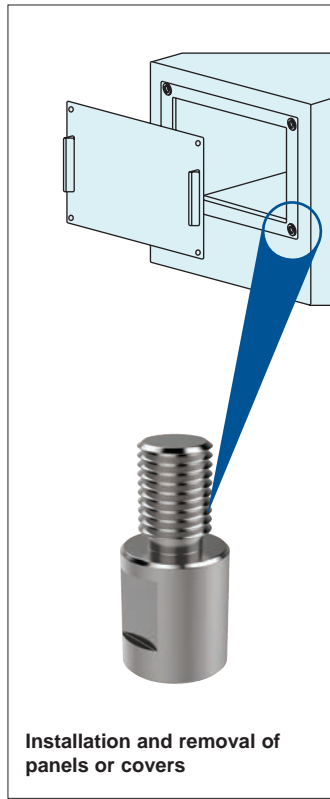
One-Touch Fasteners - Alternatives to Screws



Installation and removal of conveyor sub assemblies



Changes of star wheels and guide plates



Installation and removal of panels or covers



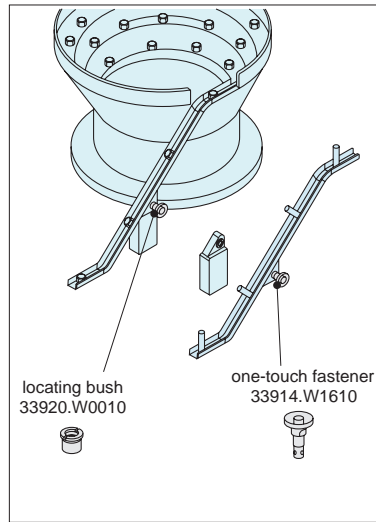
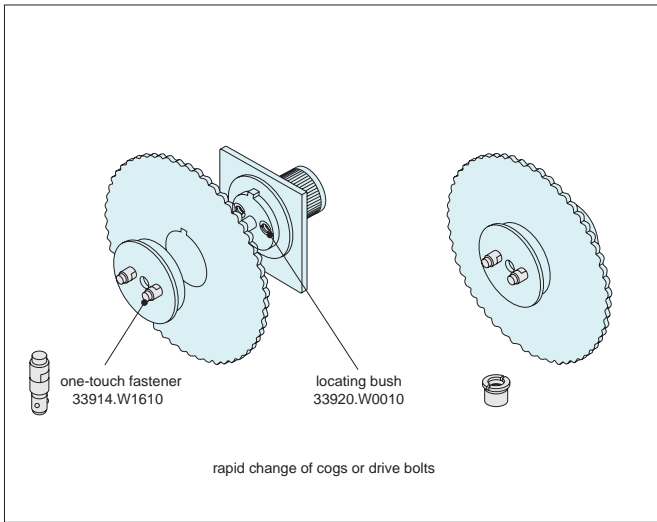
Change of shoots or production guides

Easy & Secure! For Quick Changeover with No Tools!



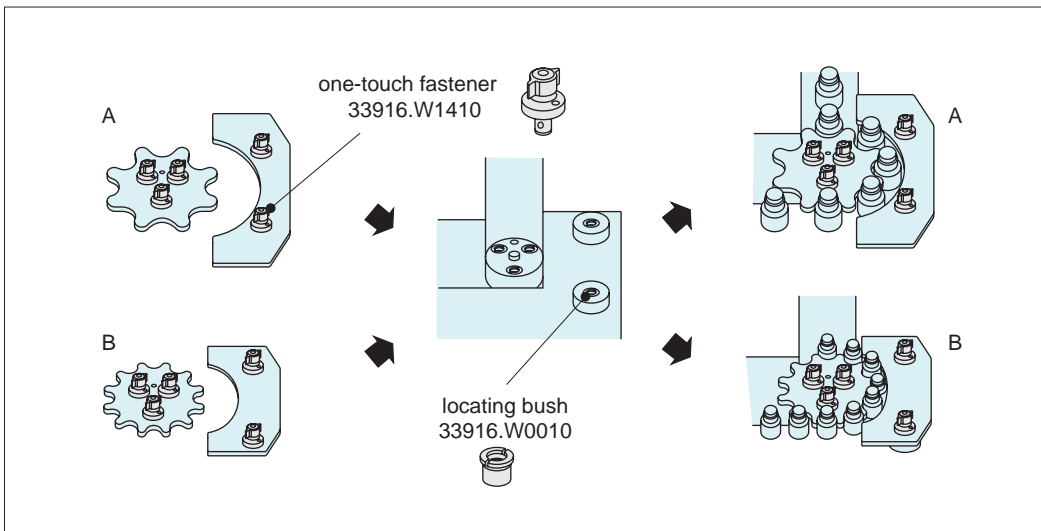


One-Touch Change Over

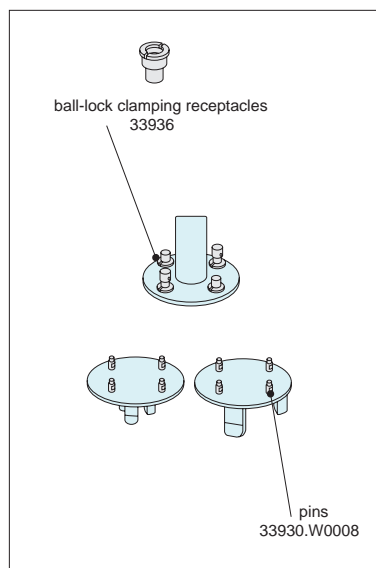
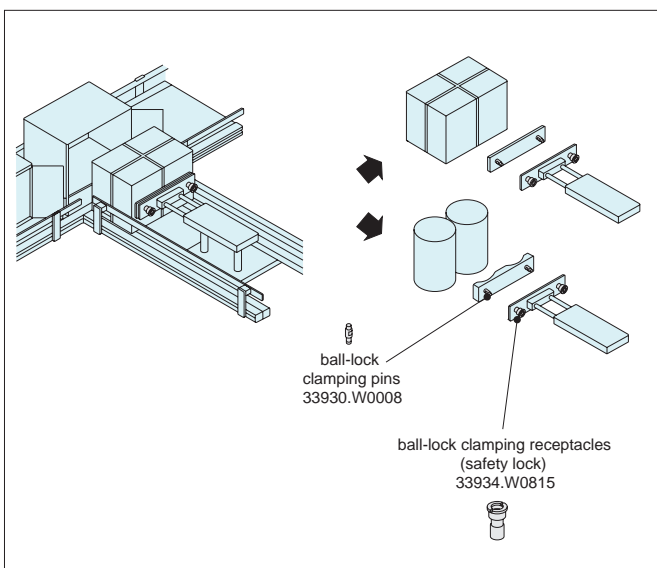


Installation and Removal of Rotary Blades and Changes of Shooters

ONE TOUCH FASTENERS



Changes of Star Wheels and Guide Plates



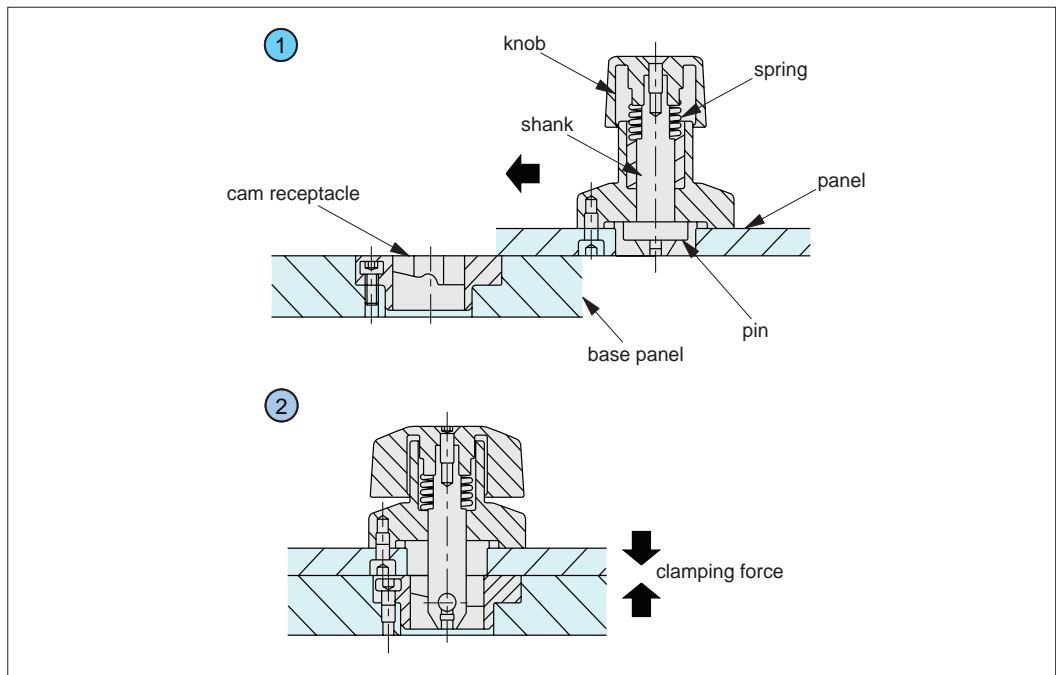
Changes of Pusher and Changes of Chuck Handling Machines

ov-W33910-A-T-W33956-A-T-one-touch-fasteners-b-rmh - Updated - 27-10-2022



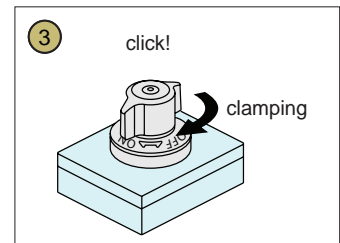
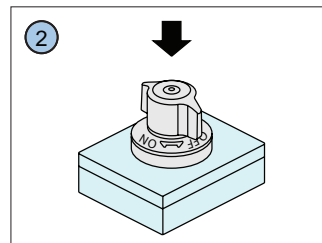
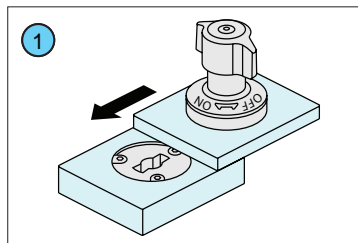
Operating Principle

- ① The shank retracts at the unclamping position to enable operations without interference with the base panel.
- ② When the pin contacts along the cam surface in the cam receptacle, the spring gets compressed to press down the panel.



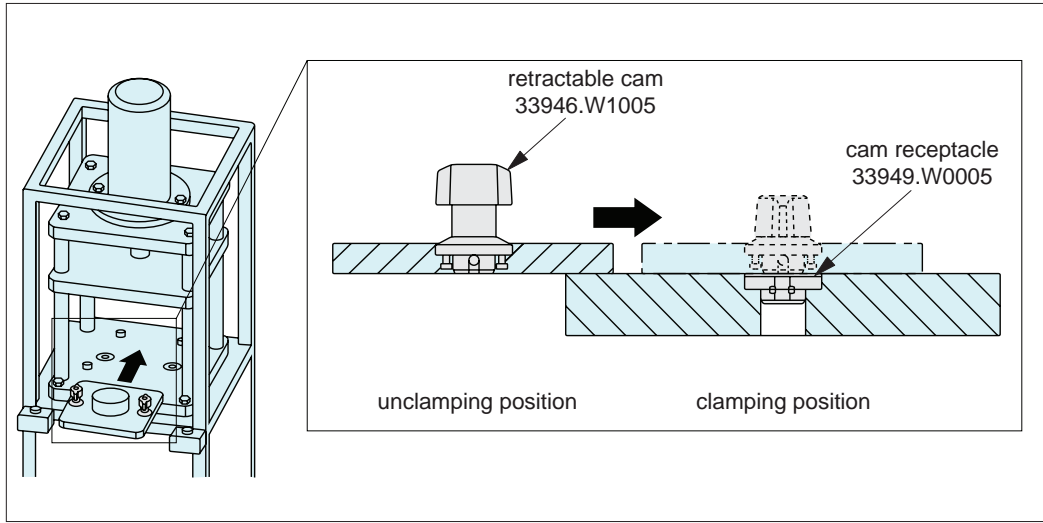
Operating Instructions

- ① Ensure that the knob is positioned at the "OFF" mark and the pin is retracted.
- ② Locate the cam receptacle directly under the fastener. Insert retracted pin by pressing the knob down.
- ③ Turn the knob to the "ON" mark for clamping. The knob clicks when clamped. Turning the knob to the "OFF" position, the pin returns automatically to the unclamping position.

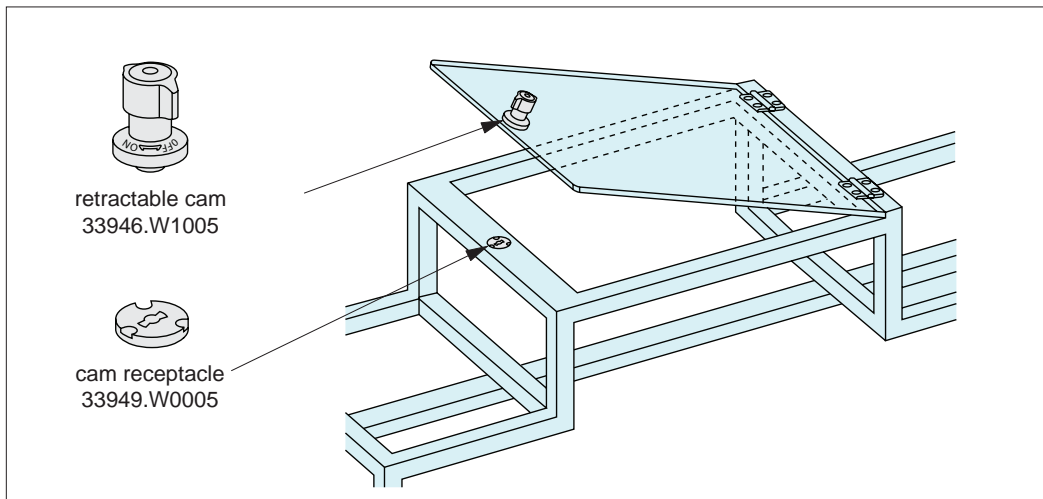




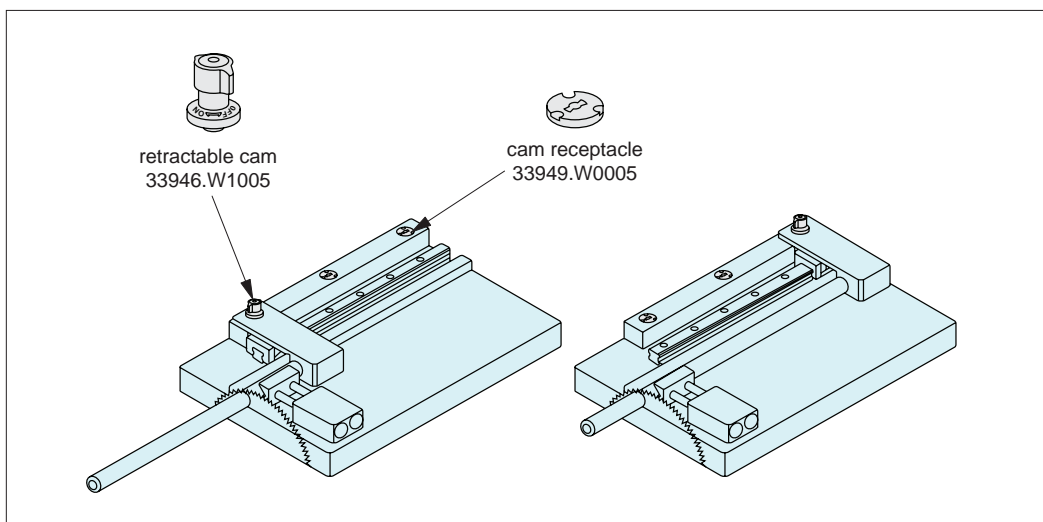
Applications



Changes of Fixture Plates



Lock for Doors



Adjustment of Workpiece Guides