

34090

SELF-ALIGNING PADS

Material

Spring element: thermoplastic PUR.
 Ball: Ball-bearing steel, hardened, bright.
 stainless steel 1.3541, nickel-plated.
 Body: Heat-treated steel, tempered, phos-

phated. stainless steel 1.4057, heat-treated.

loading capacity valid for steel and stainless steel design.

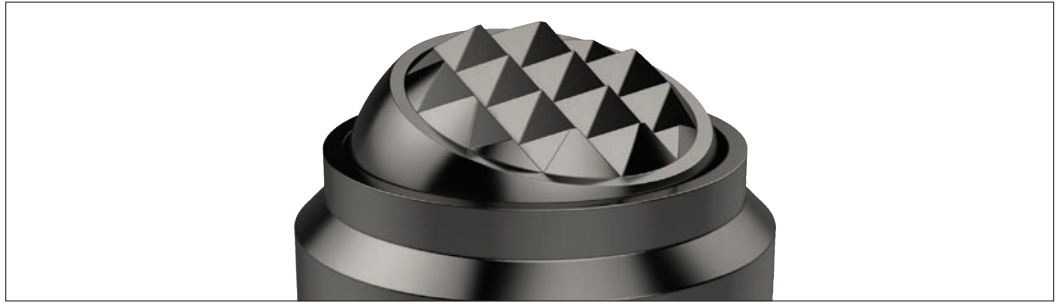
Technical Notes

Ball protected against rotating.

Order No.	Material	Ball	d ₁	d ₂	d ₃	l ₁	l ₂ -0.5	A/F	Load capacity for static load kN max.	Tightening torque Nm max.	Weight g
34090.W0012	Steel Plain Surface	10	13	M 6	7.2	13	8	11	10	13	13
34090.W0013	Steel Plain Surface	10	13	M 8	7.2	13	8	11	10	14	14
34090.W0018	Steel Plain Surface	16	20	M 8	10.5	18	10	17	25	25	39
34090.W0019	Steel Plain Surface	16	20	M10	10.5	18	10	17	25	46	40
34090.W0020	Steel Plain Surface	16	20	M10	10.5	18	10	17	25	46	44
34090.W0030	Steel Plain Surface	25	30	M16	20	27	16	27	90	206	153
34090.W0050	Steel Plain Surface	40	50	M20	34.5	35	20	41	165	407	491
34090.W0060	Steel Plain Surface	40	50	M24	34.5	35	24	41	165	698	526
34090.W0112	Stainless Plain Surface	10	13	M 6	7.2	13	8	11	10	13	13
34090.W0113	Stainless Plain Surface	10	13	M 8	7.2	13	8	11	10	14	14
34090.W0118	Stainless Plain Surface	16	20	M 8	10.5	18	10	17	25	25	39
34090.W0119	Stainless Plain Surface	16	20	M10	10.5	18	10	17	25	46	40
34090.W0120	Stainless Plain Surface	16	20	M10	10.5	18	10	17	25	46	44
34090.W0130	Stainless Plain Surface	25	30	M16	20	27	16	27	90	206	153
34090.W0150	Stainless Plain Surface	40	50	M20	34.5	35	20	41	165	407	491
34090.W0160	Stainless Plain Surface	40	50	M24	34.5	35	24	41	165	698	526
34090.W0312	Steel Ribbed Surface	10	13	M 6	7.2	13	8	11	10	13	13
34090.W0313	Steel Ribbed Surface	10	13	M 8	7.2	13	8	11	10	14	14
34090.W0318	Steel Ribbed Surface	16	20	M 8	10.5	18	10	17	25	25	39
34090.W0319	Steel Ribbed Surface	16	20	M10	10.5	18	10	17	25	46	40
34090.W0320	Steel Ribbed Surface	16	20	M10	10.5	18	10	17	25	46	44
34090.W0330	Steel Ribbed Surface	25	30	M16	20	27	16	27	90	206	153
34090.W0350	Steel Ribbed Surface	40	50	M20	34.5	35	20	41	165	407	491
34090.W0360	Steel Ribbed Surface	40	50	M24	34.5	35	24	41	165	698	526

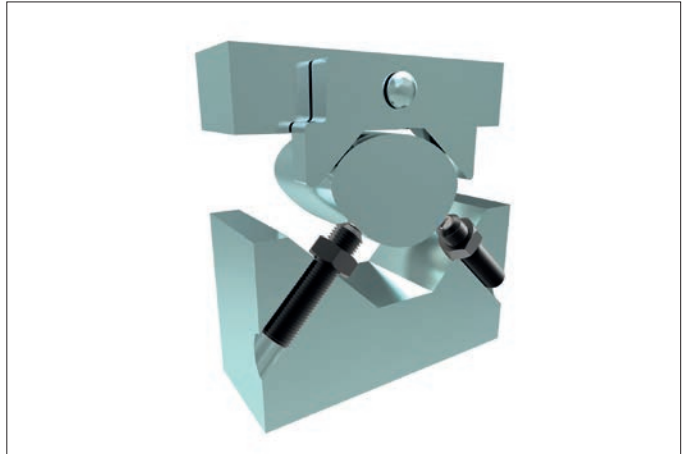


Clamping, supporting and aligning non-parallel and uneven surfaces is greatly simplified with the use of Wixroyd self-aligning pads and thrust screws. Available with ridged faces for improved holding of cast components, or plastic faces for holding more delicate parts.



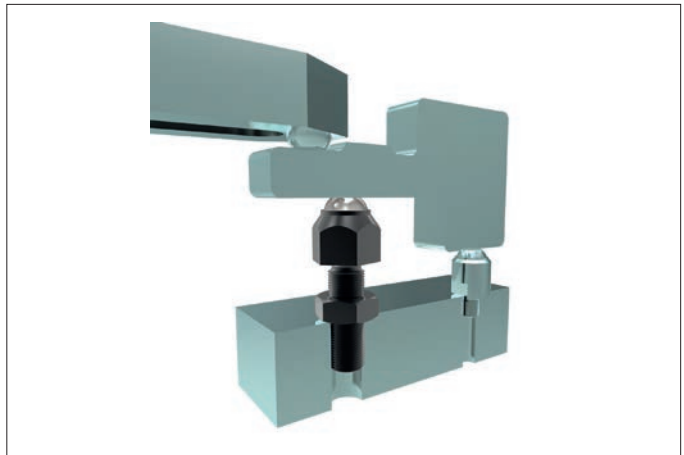
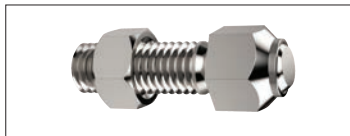
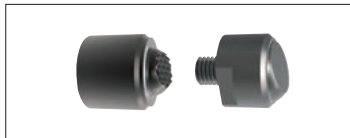
Self-aligning Thrust Screws

34000 to 34060 - Self-aligning thrust screws in sizes M6 to M24, ideal for clamping or supporting non-parallel surfaces.



Self-aligning Pads

34080 to 34121 - Self-aligning pads, both male and female mounting, ideal for accommodating variations between parts in fixtures.



Thrust Screws

34140 to 34160 - Thrust screws, with either brass or thermoplastic pads, are suitable for gentle clamping and positioning more delicate parts.

