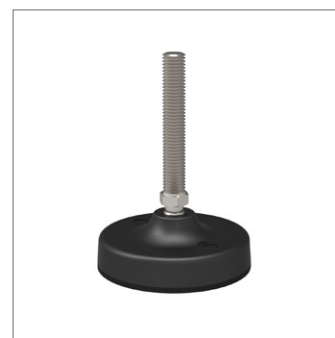
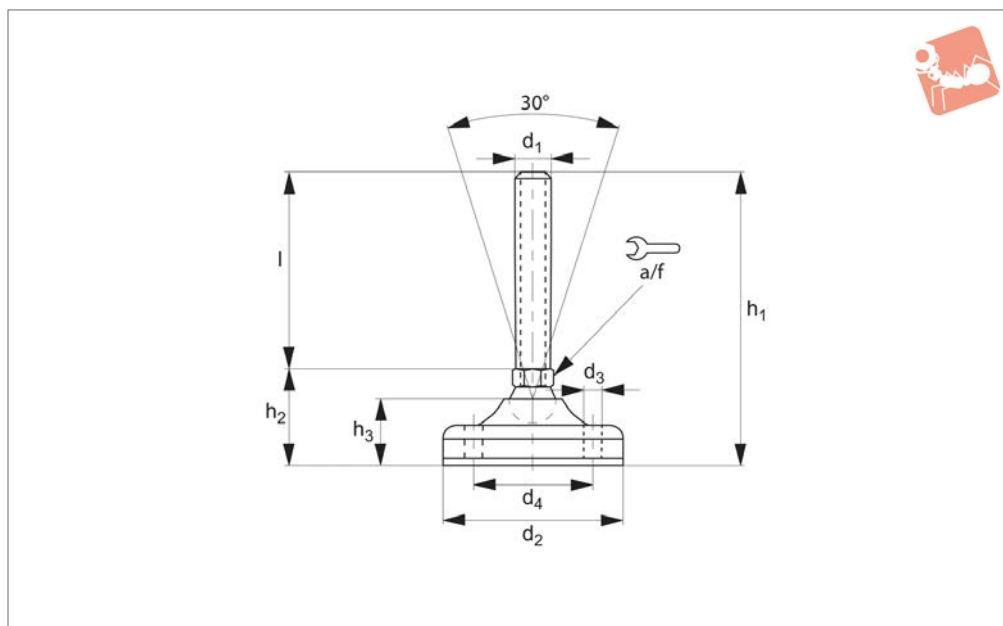




Levelling Feet

plastic pad, bolt steel

Levelling Feet



34724

LEVELLING FEET

Material

Pad: polyamide reinforced by fibre glass with anti-slip pad.
Bolt: steel (C40)

Technical Notes

Load values refer to static loads, located at half the screw height.
When vibrations or dynamic loads are

present these values should be reduced.

Order No.	d ₁	d ₂	d ₃	d ₄	l	h ₁	h ₂	h ₃	A/F	Load kN max.
34724.W1000	M10	83	8.5	55	50	91	41	30	14	15
34724.W1001	M10	83	8.5	55	75	116	41	30	14	15
34724.W1002	M10	83	8.5	55	100	141	41	30	14	15
34724.W1003	M10	83	8.5	55	125	166	41	30	14	15
34724.W1200	M12	83	8.5	55	50	91	41	30	14	15
34724.W1201	M12	83	8.5	55	75	116	41	30	14	15
34724.W1202	M12	83	8.5	55	100	141	41	30	14	15
34724.W1203	M12	83	8.5	55	125	161	41	30	14	15
34724.W1400	M14	83	8.5	55	50	91	41	30	14	20
34724.W1401	M14	83	8.5	55	75	116	41	30	14	20
34724.W1402	M14	83	8.5	55	100	141	41	30	14	20
34724.W1403	M14	83	8.5	55	125	166	41	30	14	20
34724.W1404	M14	83	8.5	55	150	191	41	30	14	20
34724.W1405	M14	83	8.5	55	175	216	41	30	14	20
34724.W1600	M16	83	8.5	55	50	91	41	30	16	20
34724.W1601	M16	83	8.5	55	75	116	41	30	16	20
34724.W1602	M16	83	8.5	55	100	141	41	30	16	20
34724.W1603	M16	83	8.5	55	125	166	41	30	16	20
34724.W1604	M16	83	8.5	55	150	191	41	30	16	20
34724.W1605	M16	83	8.5	55	175	216	41	30	16	20
34724.W1606	M16	83	8.5	55	200	241	41	30	16	20
34724.W1607	M16	103	12.5	73	50	104	54	35@	20	25
34724.W1608	M16	103	12.5	73	75	129	54	35@	20	25
34724.W1609	M16	103	12.5	73	100	154	54	35@	20	25
34724.W1700	M16	103	12.5	73	125	179	54	35@	20	25
34724.W1701	M16	103	12.5	73	150	204	54	35@	20	25
34724.W1702	M16	103	12.5	73	175	229	54	35	20	25
34724.W1703	M16	103	12.5	73	200	254	54	35@	20	25
34724.W1704	M16	103	12.5	73	225	279	54	35@	20	25
34724.W2000	M20	83	8.5	55	75	119	44	30@	17	20
34724.W2001	M20	83	8.5	55	100	144	44	30	17	20
34724.W2002	M20	83	8.5	55	125	169	44	30	17	20
34724.W2003	M20	83	8.5	55	150	194	44	30	17	20



Order No.	d ₁	d ₂	d ₃	d ₄	l	h ₁	h ₂	h ₃	A/F	Load kN max.
34724.W2004	M20	83	8.5	55	175	219	44	30	17	20
34724.W2005	M20	83	8.5	55	200	244	44	30	17	20
34724.W2006	M20	83	8.5	55	225	269	44	30	17	20
34724.W2007	M20	103	12.5	73	75	129	54	35	20	25
34724.W2008	M20	103	12.5	73	100	154	54	35	20	25
34724.W2009	M20	103	12.5	73	125	179	54	35	20	25
34724.W2010	M20	103	12.5	73	150	204	54	35	20	25
34724.W2011	M20	103	12.5	73	175	229	54	35	20	25
34724.W2012	M20	103	12.5	73	200	254	54	35	20	25
34724.W2013	M20	103	12.5	73	225	279	54	35	20	25
34724.W2014	M20	103	12.5	73	250	304	54	35	20	25
34724.W2400	M24	103	12.5	73	75	129	54	35	20	25
34724.W2401	M24	103	12.5	73	100	154	54	35	20	25
34724.W2402	M24	103	12.5	73	125	179	54	35	20	25
34724.W2403	M24	103	12.5	73	150	204	54	35	20	25
34724.W2404	M24	103	12.5	73	175	229	54	35	20	25
34724.W2405	M24	103	12.5	73	200	254	54	35	20	25
34724.W2406	M24	103	12.5	73	225	279	54	35	20	25
34724.W2407	M24	103	12.5	73	250	304	54	35	20	25