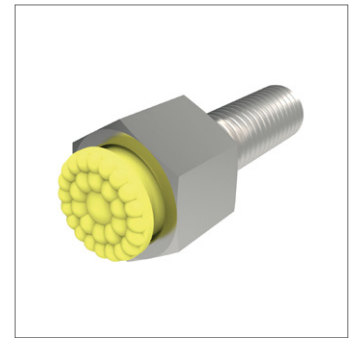
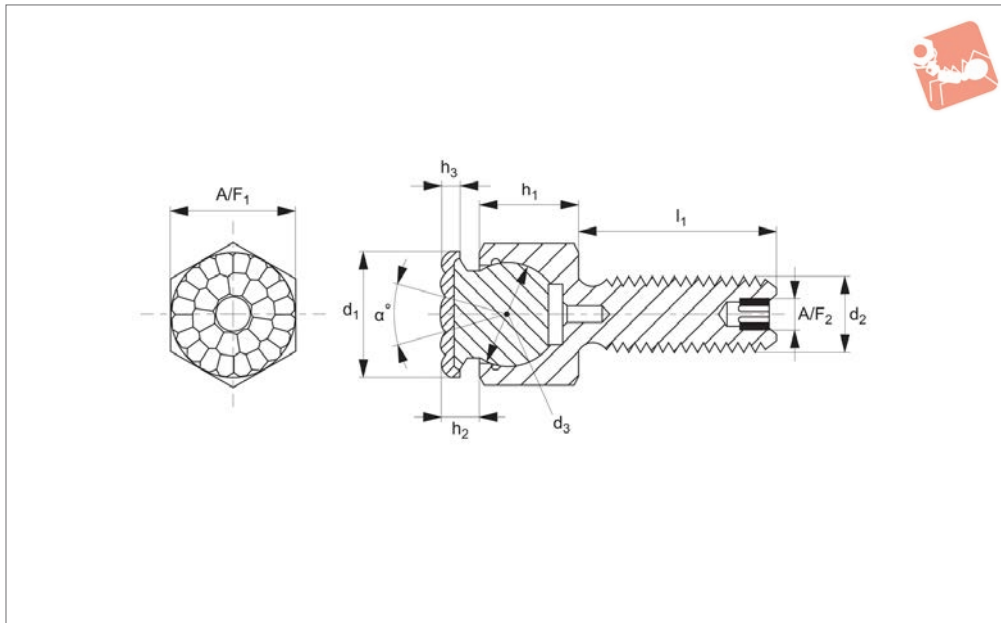




Grippers - Self Aligning urethane coated - threaded bolt

Grippers & Rest Pads



35620

GRIPPERS & REST PADS

Material

Housing body: alloy steel, heat treated to HRC 43-46, black oxide finish.

Pad: urethane, bonded to AISI 300 series stainless steel ball.

Technical Notes

Non-marking, non-staining urethane pad is permanently bonded to the stainless

steel body. Available in three different durometers: 35, 60 & 80 (see table). Bubbled texture of urethane pad allows air to escape so avoiding any suction action.

Tips

Re-seating: expel air by using 0,3 monofilament line between ball and housing, remove line when seated correctly.

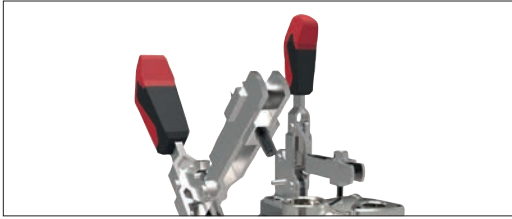
Important Notes

Load compression ratings based on load required to compress urethane surface 0,812mm for 2mm thick pad. Compression ratings vary greatly depending upon temperature and other application-specific factors.

Order No.	d ₁	d ₂	l ₁	d ₃	h ₁ ±0.05	h ₂	A/F ₁	A/F ₂	Urethane thickness h ₃	Durometer	Swivel angle α	Load compression kg
35620.W3062	10	M 6x1,0	25	7	8.0	4	10	-	2	35	28	3
35620.W3063	10	M 6x1,0	40	7	8.0	4	10	-	2	35	28	3
35620.W3121	21	M12x1,75	20	15	15.0	6	19	5	2	35	24	68
35620.W6061	10	M 6x1,0	12	7	8.0	4	10	-	2	60	28	11
35620.W6062	10	M 6x1,0	25	7	8.0	4	10	-	2	60	28	11
35620.W6063	10	M 6x1,0	40	7	8.0	4	10	-	2	60	28	11
35620.W6081	13	M 8x1,25	12	10	11.5	5	13	-	2	60	28	34
35620.W6082	13	M 8x1,25	25	10	11.5	5	13	-	2	60	28	34
35620.W6083	13	M 8x1,25	40	10	11.5	5	13	-	2	60	28	34
35620.W6101	16	M10x1,5	15	13	13.0	5	17	3	2	60	28	65
35620.W6102	16	M10x1,5	30	13	13.0	5	17	3	2	60	28	65
35620.W6103	16	M10x1,5	50	13	13.0	5	17	3	2	60	28	65
35620.W6121	21	M12x1,75	20	15	15.0	6	19	5	2	60	24	154
35620.W6122	21	M12x1,75	40	15	15.0	6	19	5	2	60	24	154
35620.W6123	21	M12x1,75	60	15	15.0	6	19	5	2	60	24	154
35620.W6161	23	M16x2,0	25	20	19.0	6	24	6	2	60	24	181
35620.W6162	23	M16x2,0	50	20	19.0	6	24	6	2	60	24	181
35620.W6163	23	M16x2,0	80	20	19.0	6	24	6	2	60	24	181
35620.W8061	10	M 6x1,0	12	7	8.0	4	10	-	2	80	28	29
35620.W8062	10	M 6x1,0	25	7	8.0	4	10	-	2	80	28	29
35620.W8063	10	M 6x1,0	40	7	8.0	4	10	-	2	80	28	29
35620.W8081	13	M 8x1,25	12	10	11.5	5	13	-	2	80	28	68
35620.W8082	13	M 8x1,25	25	10	11.5	5	13	-	2	80	28	68
35620.W8083	13	M 8x1,25	40	10	11.5	5	13	-	2	80	28	68
35620.W8101	16	M10x1,5	15	13	13.0	5	17	3	2	80	28	97
35620.W8102	16	M10x1,5	30	13	13.0	5	17	3	2	80	28	97
35620.W8103	16	M10x1,5	50	13	13.0	5	17	3	2	80	28	97
35620.W8121	21	M12x1,75	20	15	15.0	6	19	5	2	80	24	238
35620.W8122	21	M12x1,75	40	15	15.0	6	19	5	2	80	24	238



Order No.	d ₁	d ₂	l ₁	d ₃	h ₁ ±0.05	h ₂	A/F ₁	A/F ₂	Urethane thickness h ₃	Durometer	Swivel angle a °	Load compression kg
35620.W8123	21	M12x1,75	60	15	15.0	6	19	5	2	80	24	238
35620.W8161	23	M16x2,0	25	20	19.0	6	24	6	2	80	24	272
35620.W8162	23	M16x2,0	0	20	19.0	6	24	6	2	80	24	272
35620.W8163	23	M16x2,0	80	20	19.0	6	24	6	2	80	24	272

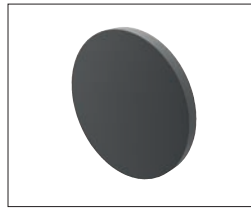


Grippers enhance workholding for multiple machining operations.



Grippers increase handling capability.

Pads and Gripper Options



Solid Carbide

High impact carbide pads, can be brazed or bonded into place.



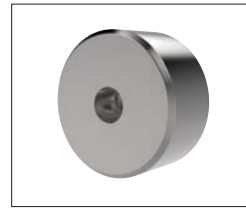
Carbide Tipped

Constructed with high impact carbide pad brazed to a heat treated alloy steel body. Mount via tapped hole or a flat on the outside diameter for set screw mounting.



Hardened Steel

Made from 8620 steel, carburized and hardened to Rc 58/60 1.2mm with black oxide finish. Mount via tapped or counter bored hole.



Non-marking Thermoplast

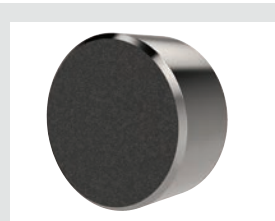
Made from white thermoplast. Mount via tapped or counter bored hole.

Pads



Stainless Steel

Pad from 17-4 stainless steel, hardened to Rc 43/46. Mount via tapped or counter bored hole.



Abrasive Diamond Surface

Abrasive surface permanently fused to a 17-4 stainless steel pad, hardened to Rc 43/46. The surface texture is comparable to a 100 grit abrasive. Mount via tapped or counter bored hole.



Soft Urethane Surface

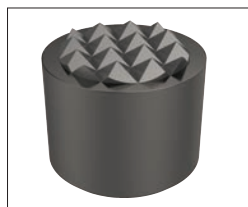
Urethane surface is permanently bonded to a 300 series stainless steel pad. The urethane provides excellent protection against damage on delicate work surfaces. Tapped hole mounting.

see our website for our full range:
wixroyd.com



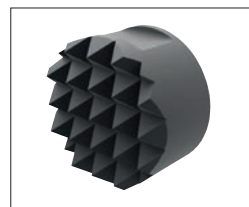
High Speed Tool Steel

Manufactured from M-2 high speed tool steel, hardened to Rc 60/62 with black oxide finish. Mount via tapped hole, counter bored hole or a flat on the outside diameter for set screw mounting.



Carbide Tipped

Constructed with high impact carbide pad brazed to a heat treated alloy steel body. Mounts via tapped hole or a flat on the outside diameter for set screw mounting.



Solid Carbide

Manufactured from high impact carbide in a solid gripper pad or as a solid gripper body with a threaded brazed-in steel insert. Mount via tapped hole or a flat on the outside diameter for set screw mounting.

Grippers



A Range of Specialist Gripping Pads to Suit Your Application

Urethane Coated



Unique urethane coat prevents marking of delicate components during machining or manipulation by robots. The urethane pad is permanently bonded to the stainless steel body of the gripping pad. With a bubbled texture, air is able to escape and hence avoid any suction action - enabling easy releasing of parts.

These are available in three different urethane durometers.



35 durometer:
Pencil rubber top

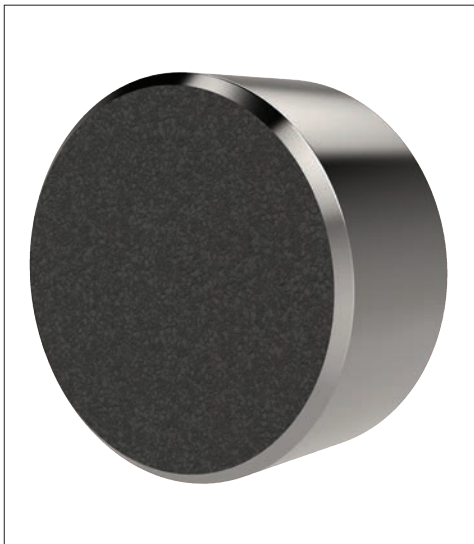


60 durometer:
Car tyre



80 durometer:
Skateboard wheel

Abrasive Diamond Coated



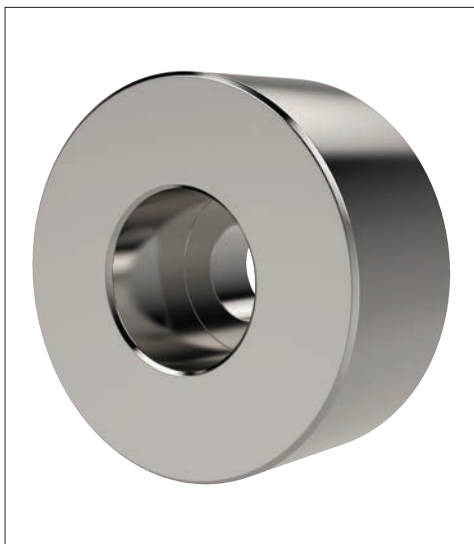
To improve handling of smooth or slippery components, with a minimum of clamping pressure, our abrasive diamond coated pads provide an excellent solution.

Diamond powders are permanently fused to a 17-4 stainless pad, to provide an abrasive surface comparable to 100 grit value.



Sandpaper of 100 grit texture

Stainless Pads



Pads of 17-4 Stainless, hardened to RC 43/46 provide solutions to applications where material selection is of greater importance; for example nuclear or food processing or pharmaceutical applications.