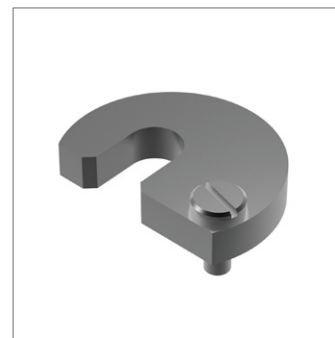
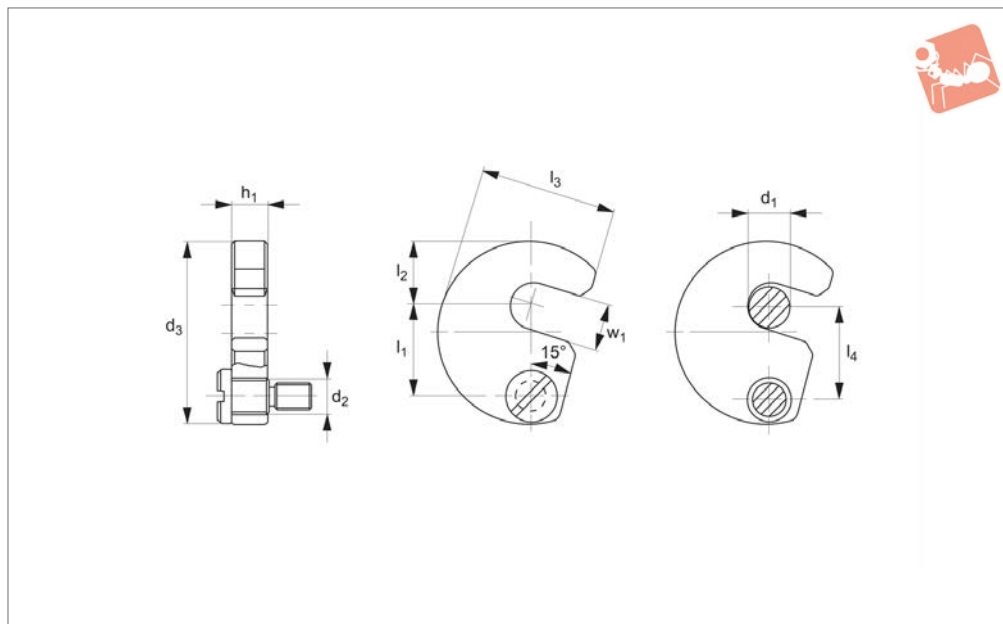




Captive C Washers shoulder bolt



Washers



36620

WASHERS

Material

Heat-treated steel (DIN 6371), blackened and tempered.

Shoulder bolt: steel, strength class 5.8,

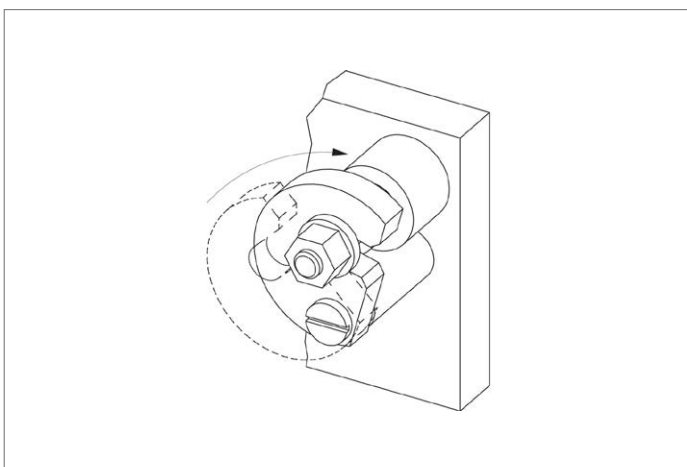
blackened.

provided.

Technical Notes

Shoulder bolt no. 36700 (DIN 923)

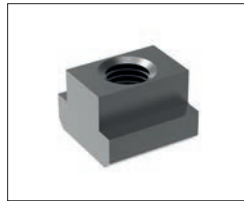
Order No.	Size	d ₁	d ₂	d ₃	h ₁ -0.2	l ₁	l ₂	l ₃	l ₄	w ₁	Matching screw DIN 923	Weight g
36620.W0006	6	6	9	38	9.8	19.6	11	29.0	19	7.5	M 6x10	66
36620.W0008	8	8	9	43	9.8	21.6	14	32.5	21	9.5	M 6x10	81
36620.W0010	10	10	9	48	9.8	23.6	17	36.5	23	11.5	M 6x10	99
36620.W0012	12	12	11	61	11.8	29.6	22	45.0	29	13.5	M 8x12	194
36620.W0016	16	16	11	68	11.8	33.6	25	50.0	33	17.5	M 8x12	229
36620.W0020	20	20	11	74	11.8	36.6	28	55.0	36	21.5	M 8x12	265
36620.W0024	24	24	11	82	15.8	40.6	32	62.0	40	25.5	M 8x16	430
36620.W0030	30	30	11	97	15.8	49.0	39	73.0	48	32.0	M 8x16	584



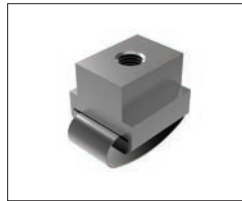


Nuts

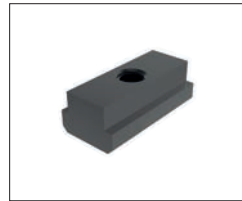
Available in heat treated steel, unless stated otherwise.



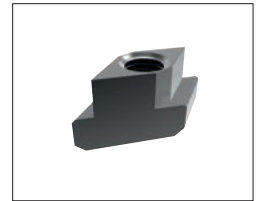
24000 T-Nut, Strength Class 10 DIN 508.



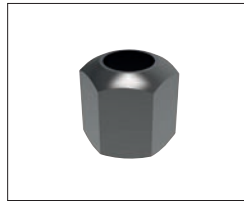
24010 T-Nut with Anti-Slip Device.



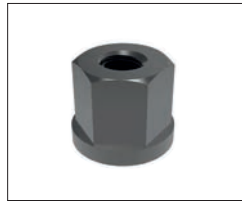
24100 Extended T-Nut. Strength Class 10.



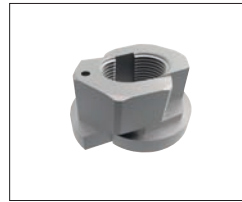
24120 Rhombus T-Nuts



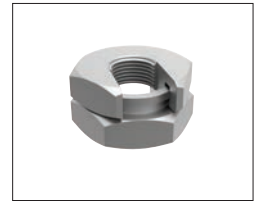
24300 Fixture Nuts. Strength Class 10 - DIN 6330B



24400 Collar Nuts, DIN 6331



24502 Fast Nut - With Collar Rapid Assembly Nut



24520 - Steel Slip-On Lock Nuts - Rapid Assembly Nut.



24600 Extension Nuts Strength Class 10.



24620 Swivel Nuts, Conical Seat

Washers

Available in a range of steel types - see product for details.



25000 - Hardened Steel - Plain Washers. DIN 6340.



25100 - Case Hardened Steel - Spherical Seat Washers. Type C - DIN 6319C.



25400 - Case Hardened Steel - Dished Washers, Type D - DIN 6319D.



25700 - Tempered Steel - Dished Washers, Type G - DIN 6319G.



25900 - Stainless Steel Compact Spherical Washer, Conical Seat, similar to DIN6319