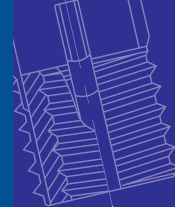


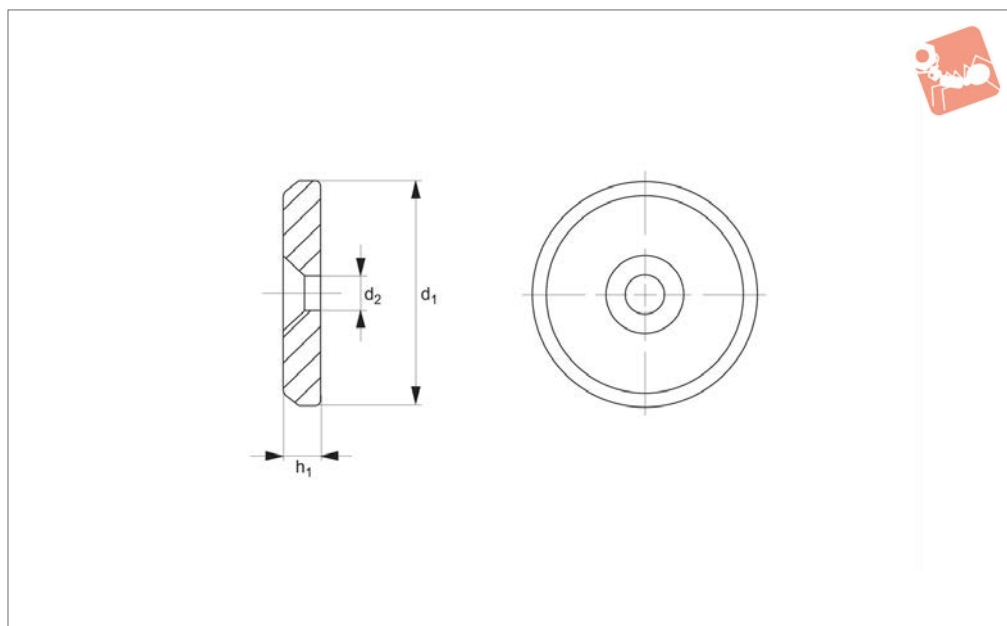


# Countersunk Washers

steel and stainless steel



## Washers



**36720**

WASHERS

### Material

#### Free cutting steel type:

Free cutting steel, unhardened, blackened.

#### Stainless steel type:

Stainless steel (AISI 303, 1.4305).

### Technical Notes

They can be pinned with a cylindrical pin to

prevent them turning or becoming loose.

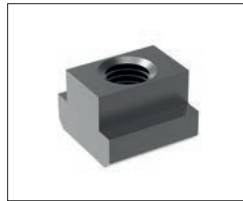
Secure with screws.

Order No.	Material	d <sub>1</sub>	d <sub>2</sub>	h <sub>1</sub>	Matching screws DIN 963 and DIN 7991	Weight g
36720.W0016	Steel	16	4.5	3.0	M 4	3.6
36720.W0020	Steel	20	4.5	3.0	M 4	6.1
36720.W0022	Steel	22	5.5	3.5	M 5	8.1
36720.W0025	Steel	25	5.5	3.5	M 5	11
36720.W0028	Steel	28	5.5	3.5	M 5	14
36720.W0032	Steel	32	6.6	4.0	M 6	22
36720.W0036	Steel	36	6.6	4.0	M 6	28
36720.W0040	Steel	40	6.6	5.0	M 6	44
36720.W0045	Steel	45	6.6	6.0	M 6	66
36720.W0052	Steel	52	6.6	6.0	M 6	91
36720.W0516	Stainless	16	4.5	3.0	M 4	3.6
36720.W0520	Stainless	20	4.5	3.0	M 4	6.1
36720.W0522	Stainless	22	5.5	3.5	M 5	8.1
36720.W0525	Stainless	25	5.5	3.5	M 5	11
36720.W0528	Stainless	28	5.5	3.5	M 5	14
36720.W0532	Stainless	32	6.6	4.0	M 6	22
36720.W0536	Stainless	36	6.6	4.0	M 6	28
36720.W0540	Stainless	40	6.6	5.0	M 6	44
36720.W0545	Stainless	45	6.6	6.0	M 6	66
36720.W0552	Stainless	52	6.6	6.0	M 6	91

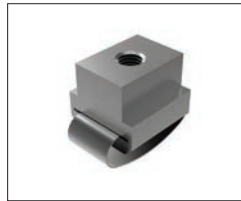


**Nuts**

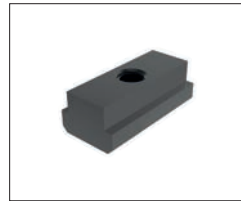
Available in heat treated steel, unless stated otherwise.



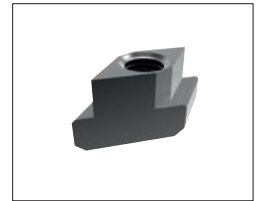
**24000** T-Nut, Strength Class 10 DIN 508.



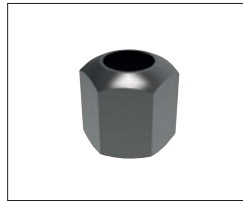
**24010** T-Nut with Anti-Slip Device.



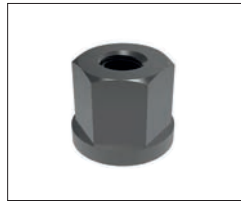
**24100** Extended T-Nut. Strength Class 10.



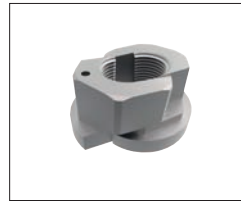
**24120** Rhombus T-Nuts



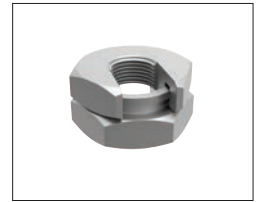
**24300** Fixture Nuts. Strength Class 10 - DIN 6330B



**24400** Collar Nuts, DIN 6331



**24502** Fast Nut - With Collar Rapid Assembly Nut



**24520 - Steel** Slip-On Lock Nuts - Rapid Assembly Nut.



**24600** Extension Nuts Strength Class 10.



**24620** Swivel Nuts, Conical Seat

**Washers**

Available in a range of steel types - see product for details.



**25000** - Hardened Steel - Plain Washers. DIN 6340.



**25100** - Case Hardened Steel - Spherical Seat Washers. Type C - DIN 6319C.



**25400** - Case Hardened Steel - Dished Washers, Type D - DIN 6319D.



**25700** - Tempered Steel - Dished Washers, Type G - DIN 6319G.



**25900** - Stainless Steel Compact Spherical Washer, Conical Seat, similar to DIN6319