

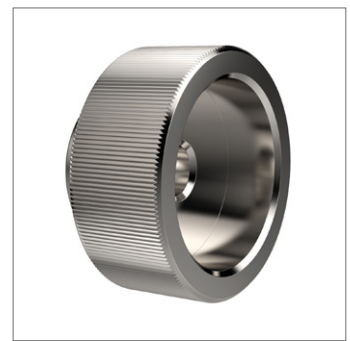
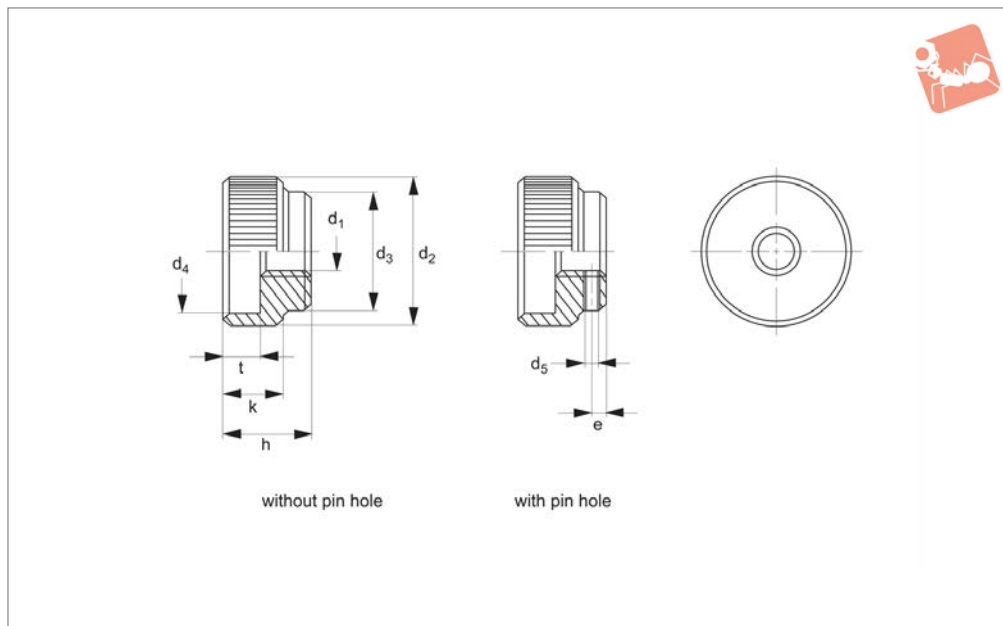


# Knurled Nuts

stainless steel - DIN 6303



# Thumb Screws



**37170**

THUMB SCREWS

### Material

Stainless steel 1.4305 (AISI 303), matte, shot-blasted.

### Technical Notes

Tolerance of pin hole  $d_5$  is H7.

| Order No.          | Type             | $d_1$ | $d_2$ | $d_3$ | $d_4$ | $d_5$ pre-drilled | e   | h  | k  | t  | Pin required DIN 7 | Weight g |
|--------------------|------------------|-------|-------|-------|-------|-------------------|-----|----|----|----|--------------------|----------|
| <b>37170.W0005</b> | Without Pin Hole | M 5   | 20    | 14    | 15    | -                 | -   | 12 | 8  | 5  | -                  | 16       |
| <b>37170.W0006</b> | Without Pin Hole | M 6   | 24    | 16    | 18    | -                 | -   | 14 | 10 | 6  | -                  | 27       |
| <b>37170.W0008</b> | Without Pin Hole | M 8   | 30    | 20    | 24    | -                 | -   | 17 | 12 | 7  | -                  | 46       |
| <b>37170.W0010</b> | Without Pin Hole | M10   | 36    | 28    | 30    | -                 | -   | 20 | 14 | 8  | -                  | 82       |
| <b>37170.W0012</b> | Without Pin Hole | M12   | 40    | 32    | 34    | -                 | -   | 24 | 16 | 10 | -                  | 123      |
| <b>37170.W0105</b> | With Pin Hole    | M 5   | 20    | 14    | 15    | 1.4               | 2.5 | 12 | 8  | 5  | 1,5 M 6x14         | 15       |
| <b>37170.W0106</b> | With Pin Hole    | M 6   | 24    | 16    | 18    | 1.4               | 2.5 | 14 | 10 | 6  | 1,5 M 6x16         | 25       |
| <b>37170.W0108</b> | With Pin Hole    | M 8   | 30    | 20    | 24    | 1.9               | 3.0 | 17 | 12 | 7  | 2,0 M 6x20         | 45       |
| <b>37170.W0110</b> | With Pin Hole    | M10   | 36    | 28    | 30    | 2.9               | 4.0 | 20 | 14 | 8  | 3,0 M 6x28         | 86       |
| <b>37170.W0112</b> | With Pin Hole    | M12   | 40    | 32    | 34    | 3.9               | 4.0 | 24 | 16 | 10 | 4,0 M 6x32         | 121      |