

**37420**

GRIPS

**Material**

Stainless steel 1.4308, matt finish.

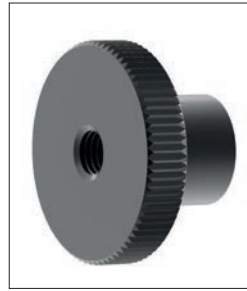
Order No.	Type	d <sub>1</sub>	d <sub>2</sub>	d <sub>3</sub>	d <sub>4</sub> tol. H13	b	h <sub>1</sub>	h <sub>2</sub> ≈	t <sub>1</sub> min.	t <sub>2</sub>
37420.W0010	Threaded, blind	46	M 6	13	6.5	6	22.5	6.0	12	10
37420.W0012	Threaded, blind	46	M 8	13	8.5	6	22.5	6.0	15	13
37420.W0014	Threaded, blind	58	M 8	16	8.5	7	26.5	7.0	15	13
37420.W0016	Threaded, blind	58	M10	16	10.5	7	26.5	7.0	18	16
37420.W0210	Threaded, through hole	46	M 6	13	6.5	6	22.5	6.0	12	10
37420.W0212	Threaded, through hole	46	M 8	13	8.5	6	22.5	6.0	15	13
37420.W0214	Threaded, through hole	58	M 8	16	8.5	7	26.5	7.0	15	13
37420.W0216	Threaded, through hole	58	M10	16	10.5	7	26.5	7.0	18	16



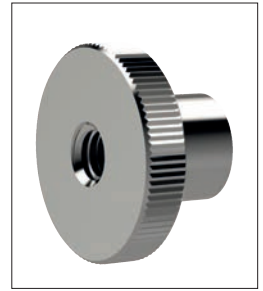
**37020** - Steel flat knurled screw



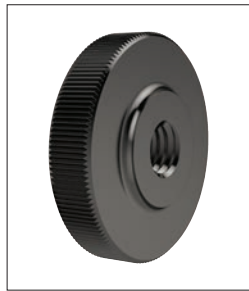
**37040** - Stainless steel flat knurled screw



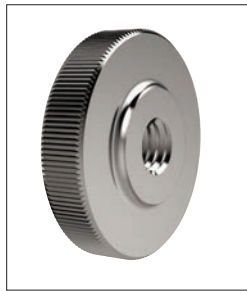
**37100** - Steel knurled nut with collar



**37110** - Stainless steel knurled nut with collar



**37120** - Steel flat knurled nut



**37130** - Stainless steel flat knurled nut



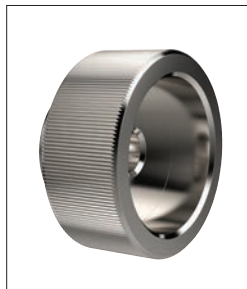
**37140** - Steel knurled screw with collar



**37150** - Stainless steel knurled screw with collar



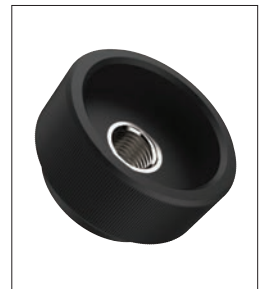
**37160** - Steel knurled nut



**37170** - Stainless steel knurled nut



**37200** - Stainless steel knurled thumb screw



**37330** - Plastic knurled nut



**37352** - Plastic knurled steel screw



**37354** - Plastic knurled stainless steel screw



**37380** - 1/4 turn screw



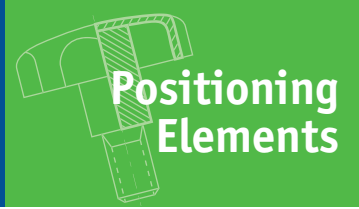
**37400** - 1/4 turn nut



**37460** - Thumb knob



# Wide Selection of Thumb Screws, Knurled Screws & Wing Nuts



**72180** - Plastic wing nut



**72190** - Plastic wing nut with screw



**72210** - Plastic wing nuts



**72270** - 1/4 turn nut



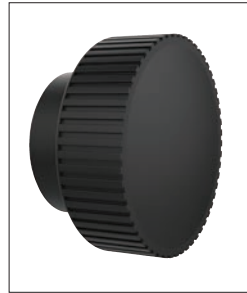
**72280** - 1/4 turn nut



**72290** - 1/4 turn screw



**72300** - 1/4 turn screw



**72410** - Knurled knob



**72430** - Knurled knob with screw



**72440** - Knurled knobs



**72460** - Knurled knobs



**73200** - Mushroom knobs

GRIPS