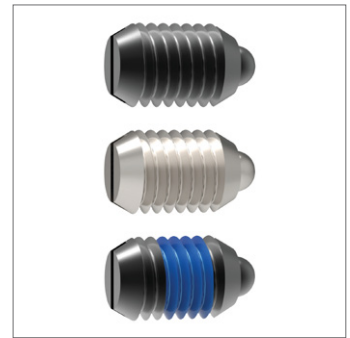
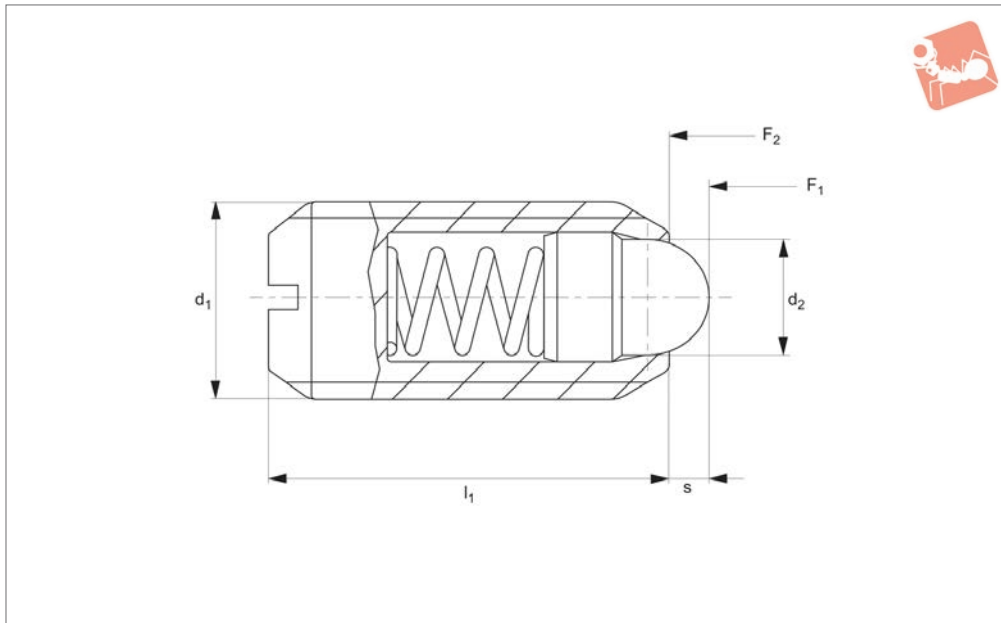




Spring Plungers - IMPERIAL

with round-ended pin and slot - stainless steel or

Spring Plunger & Detent Pins



3B150

SPRING PLUNGER & DETENT PINS

Material

Free cutting steel type-

Body: free cutting steel, blackened.

Pin: free cutting steel, hardened.

Spring: stainless steel.

Stainless steel type-

Body: stainless steel 1.4305 (AISI 303).

Pin: stainless steel 1.4305 (AISI 303).

Spring: stainless steel.

Technical Notes

To be used as detents or for locating, posi-

tioning, indexing, locking, latching, ejecting, lifting off and other similar push application.

Temperature range for execution without thread up to 482°F.

Thread lock - Polyamide spot coating.

Tips

Standard spring load = no marking

Heavy spring load = marked with two lines

Special types available on request.

Important Notes

Spring loads are statistical average values

All dimensions are in inches

Thread: 2A-UNC/UNF.

Order No.	Material	Finish	Spring load	d ₁ UNC/UNF	l ₁ ≈	s	d ₂	Spring load f ₁ lb ≈	Spring load f ₂ lb ≈	Weight oz
3B150.W0033	Steel	w/o Threadlock	Standard	UNC 6-32	3/8	0.063	0.046	0.5	1.5	0.021
3B150.W0036	Steel	w/o Threadlock	Standard	UNC 8-32	7/16	0.052	0.070	0.8	1.5	0.032
3B150.W0038	Steel	w/o Threadlock	Standard	UNF 8-36	7/16	0.052	0.070	0.8	1.5	0.032
3B150.W0040	Steel	w/o Threadlock	Standard	UNF 10-32	15/32	0.065	0.093	1.0	2.5	0.042
3B150.W0042	Steel	w/o Threadlock	Standard	UNC 1/4-20	17/32	0.078	0.119	1.1	3.5	0.074
3B150.W0046	Steel	w/o Threadlock	Standard	UNC 5/16-18	37/64	0.084	0.135	1.0	4.0	0.123
3B150.W0048	Steel	w/o Threadlock	Standard	UNC 3/8-16	5/8	0.110	0.186	1.5	4.5	0.187
3B150.W0050	Steel	w/o Threadlock	Standard	UNC 1/2-13	3/4	0.151	0.248	1.8	5.5	0.377
3B150.W0052	Steel	w/o Threadlock	Standard	UNC 5/8-11	1 1/16	0.215	0.310	2.0	8.5	0.885
3B150.W0063	Steel	w/o Threadlock	Heavy	UNC 6-32	3/8	0.063	0.046	0.5	2.5	0.018
3B150.W0066	Steel	w/o Threadlock	Heavy	UNC 8-32	7/16	0.052	0.070	1.8	4.6	0.032
3B150.W0068	Steel	w/o Threadlock	Heavy	UNF 8-36	7/16	0.052	0.070	1.8	4.6	0.032
3B150.W0070	Steel	w/o Threadlock	Heavy	UNF 10-32	15/32	0.065	0.093	2.6	6.3	0.042
3B150.W0072	Steel	w/o Threadlock	Heavy	UNC 1/4-20	17/32	0.078	0.119	3.0	9.7	0.074
3B150.W0076	Steel	w/o Threadlock	Heavy	UNC 5/16-18	37/64	0.084	0.135	3.8	13.0	0.123
3B150.W0078	Steel	w/o Threadlock	Heavy	UNC 3/8-16	5/8	0.110	0.186	4.5	16.0	0.190
3B150.W0080	Steel	w/o Threadlock	Heavy	UNC 1/2-13	3/4	0.151	0.248	5.0	22.4	0.384
3B150.W0082	Steel	w/o Threadlock	Heavy	UNC 5/8-11	1 1/16	0.215	0.310	7.0	43.5	0.907
3B150.W0133	Stainless	w/o Threadlock	Standard	UNC 6-32	3/8	0.063	0.046	0.5	1.5	0.021
3B150.W0136	Stainless	w/o Threadlock	Standard	UNC 8-32	7/16	0.052	0.070	0.8	1.5	0.032
3B150.W0138	Stainless	w/o Threadlock	Standard	UNF 8-36	7/16	0.052	0.070	0.8	1.5	0.032
3B150.W0140	Stainless	w/o Threadlock	Standard	UNF 10-32	15/32	0.065	0.093	1.0	2.5	0.042
3B150.W0142	Stainless	w/o Threadlock	Standard	UNC 1/4-20	17/32	0.078	0.119	1.1	3.5	0.074
3B150.W0146	Stainless	w/o Threadlock	Standard	UNC 5/16-18	37/64	0.084	0.135	1.0	4.0	0.123

Spring Plunger & Detent Pins

Spring Plungers - IMPERIAL

with round-ended pin and slot - stainless steel or



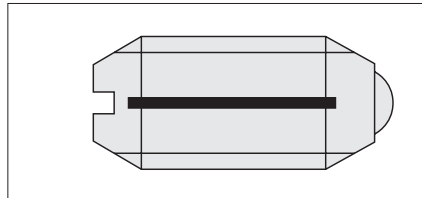
SPRING PLUNGER & DETENT PINS

Order No.	Material	Finish	Spring load	d ₁ UNC/UNF	l ₁ ≈	s	d ₂	Spring load f ₁ lb ≈	Spring load f ₂ lb ≈	Weight oz
3B150.W0148	Stainless	w/o Threadlock	Standard	UNC 3/8-16	5/8	0.110	0.186	1.5	4.5	0.190
3B150.W0150	Stainless	w/o Threadlock	Standard	UNC 1/2-13	3/4	0.151	0.248	1.8	5.5	0.388
3B150.W0152	Stainless	w/o Threadlock	Standard	UNC 5/8-11	1 1/16	0.215	0.310	2.0	8.5	0.892
3B150.W0163	Stainless	w/o Threadlock	Heavy	UNC 6-32	3/8	0.063	0.046	0.5	2.5	0.014
3B150.W0166	Stainless	w/o Threadlock	Heavy	UNC 8-32	7/16	0.052	0.070	1.8	4.6	0.032
3B150.W0168	Stainless	w/o Threadlock	Heavy	UNF 8-36	7/16	0.052	0.070	1.8	4.6	0.032
3B150.W0170	Stainless	w/o Threadlock	Heavy	UNF 10-32	15/32	0.065	0.093	2.6	6.3	0.042
3B150.W0172	Stainless	w/o Threadlock	Heavy	UNC 1/4-20	17/32	0.078	0.119	3.0	9.7	0.071
3B150.W0176	Stainless	w/o Threadlock	Heavy	UNC 5/16-18	37/64	0.084	0.135	3.8	13.0	0.123
3B150.W0178	Stainless	w/o Threadlock	Heavy	UNC 3/8-16	5/8	0.110	0.186	4.5	16.0	0.194
3B150.W0180	Stainless	w/o Threadlock	Heavy	UNC 1/2-13	3/4	0.151	0.248	5.0	22.4	0.399
3B150.W0182	Stainless	w/o Threadlock	Heavy	UNC 5/8-11	1 1/16	0.215	0.310	7.0	43.5	0.914
3B150.W0233	Steel	With Threadlock	Standard	UNC 6-32	3/8	0.063	0.046	0.5	1.5	0.021
3B150.W0236	Steel	With Threadlock	Standard	UNC 8-32	7/16	0.052	0.070	0.8	1.5	0.032
3B150.W0238	Steel	With Threadlock	Standard	UNF 8-36	7/16	0.052	0.070	0.8	1.5	0.032
3B150.W0240	Steel	With Threadlock	Standard	UNF 10-32	15/32	0.065	0.093	1.0	2.5	0.042
3B150.W0242	Steel	With Threadlock	Standard	UNC 1/4-20	17/32	0.078	0.119	1.1	3.5	0.074
3B150.W0246	Steel	With Threadlock	Standard	UNC 5/16-18	37/64	0.084	0.135	1.0	4.0	0.123
3B150.W0248	Steel	With Threadlock	Standard	UNC 3/8-16	5/8	0.110	0.186	1.5	4.5	0.187
3B150.W0250	Steel	With Threadlock	Standard	UNC 1/2-13	3/4	0.151	0.248	1.8	5.5	0.377
3B150.W0252	Steel	With Threadlock	Standard	UNC 5/8-11	1 1/16	0.215	0.310	2.0	8.5	0.885
3B150.W0263	Steel	With Threadlock	Heavy	UNC 6-32	3/8	0.063	0.046	0.5	2.5	0.018
3B150.W0266	Steel	With Threadlock	Heavy	UNC 8-32	7/16	0.052	0.070	1.8	4.6	0.032
3B150.W0268	Steel	With Threadlock	Heavy	UNF 8-36	7/16	0.052	0.070	1.8	4.6	0.032
3B150.W0270	Steel	With Threadlock	Heavy	UNF 10-32	15/32	0.065	0.093	2.6	6.3	0.042
3B150.W0272	Steel	With Threadlock	Heavy	UNC 1/4-20	17/32	0.078	0.119	3.0	9.7	0.074
3B150.W0276	Steel	With Threadlock	Heavy	UNC 5/16-18	37/64	0.084	0.135	3.8	13.0	0.123
3B150.W0278	Steel	With Threadlock	Heavy	UNC 3/8-16	5/8	0.110	0.186	4.5	16.0	0.190
3B150.W0280	Steel	With Threadlock	Heavy	UNC 1/2-13	3/4	0.151	0.248	5.0	22.4	0.384
3B150.W0282	Steel	With Threadlock	Heavy	UNC 5/8-11	1 1/16	0.215	0.310	7.0	43.5	0.907
3B150.W0333	Stainless	With Threadlock	Standard	UNC 6-32	3/8	0.063	0.046	0.5	1.5	0.021
3B150.W0336	Stainless	With Threadlock	Standard	UNC 8-32	7/16	0.052	0.070	0.8	1.5	0.032
3B150.W0338	Stainless	With Threadlock	Standard	UNF 8-36	7/16	0.052	0.070	0.8	1.5	0.032
3B150.W0340	Stainless	With Threadlock	Standard	UNF 10-32	15/32	0.065	0.093	1.0	2.5	0.042
3B150.W0342	Stainless	With Threadlock	Standard	UNC 1/4-20	17/32	0.078	0.119	1.1	3.5	0.074
3B150.W0346	Stainless	With Threadlock	Standard	UNC 5/16-18	37/64	0.084	0.135	1.0	4.0	0.123
3B150.W0348	Stainless	With Threadlock	Standard	UNC 3/8-16	5/8	0.110	0.186	1.5	4.5	0.190
3B150.W0350	Stainless	With Threadlock	Standard	UNC 1/2-13	3/4	0.151	0.248	1.8	5.5	0.388
3B150.W0352	Stainless	With Threadlock	Standard	UNC 5/8-11	1 1/16	0.215	0.310	2.0	8.5	0.892
3B150.W0363	Stainless	With Threadlock	Heavy	UNC 6-32	3/8	0.063	0.046	0.5	2.5	0.014
3B150.W0366	Stainless	With Threadlock	Heavy	UNC 8-32	7/16	0.052	0.070	1.8	4.6	0.032
3B150.W0368	Stainless	With Threadlock	Heavy	UNF 8-36	7/16	0.052	0.070	1.8	4.6	0.032
3B150.W0370	Stainless	With Threadlock	Heavy	UNF 10-32	15/32	0.065	0.093	2.6	6.3	0.042
3B150.W0372	Stainless	With Threadlock	Heavy	UNC 1/4-20	17/32	0.078	0.119	3.0	9.7	0.071
3B150.W0376	Stainless	With Threadlock	Heavy	UNC 5/16-18	37/64	0.084	0.135	3.8	13.0	0.123
3B150.W0378	Stainless	With Threadlock	Heavy	UNC 3/8-16	5/8	0.110	0.186	4.5	16.0	0.194
3B150.W0380	Stainless	With Threadlock	Heavy	UNC 1/2-13	3/4	0.151	0.248	5.0	22.4	0.399
3B150.W0382	Stainless	With Threadlock	Heavy	UNC 5/8-11	1 1/16	0.215	0.310	7.0	43.5	0.914

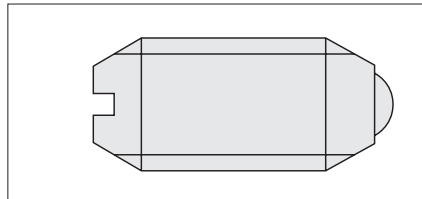


Wixroyd have applied their extensive experience and expertise in spring plunger design and production to offer a range of imperial plungers.

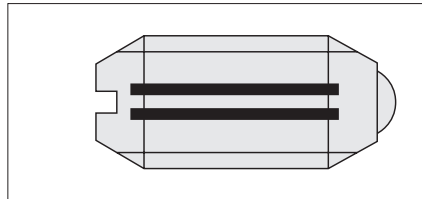
At Last – Imperial Version Spring Plungers Stocked in the UK!



Light spring load = marked with one line.



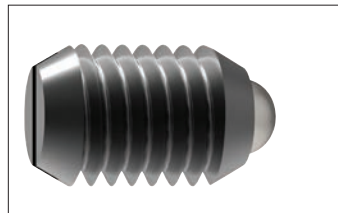
Standard spring load = no marking.



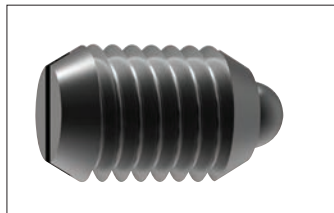
Heavy spring load = marked with two lines.

Spring Loads

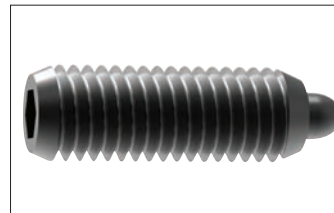
Three available spring pressure models.



3B100 Imperial plunger with ball and slot.



3B150 Imperial plunger with pin and slot.



3B200 Imperial plunger with pin and hex socket.

Thread Details

2A-UNC/UNF: sizes 4-48 to 5/8-11.

Conversion table: Metric/Imperial values

	To convert from	To	Use conversion factor
Lengths	Inch (in)	Millimeter (mm)	in x 25,4 = mm
	Millimeter (mm)	Inch (in)	mm x 0,03937 = in
Weight/force	Ounces (oz)	Gram (g)	oz x 28 = g
	Gram (g)	Ounces (oz)	g x 0,035 = oz
	Pounds (lbs)	Kilogram (Kg)	lbs x 0,4536 = Kg
	Kilogram (Kg)	Pounds (lbs)	Kg x 2,205 = lbs
	Kilogram (Kg)	Newton (N)	Kg x 9,81 = N
	Newton (N)	Kilogram (Kg)	N/ 9,81 = Kg
Temperature	Degree fahrenheit (°F)	Degree centigrade (°C)	(°F-32) x 5/9 = °C
	Degree centigrade (°C)	Degree fahrenheit (°F)	°C x 9/5 + 32 = °F
Torque	Foot-pounds (ft-lbs)	Newton-meter (Nm)	ft/lbs x 1,35 = Nm
	Newton-meter (Nm)	Foot-pounds (ft-lbs)	Nm x 0,74 = ft/lbs