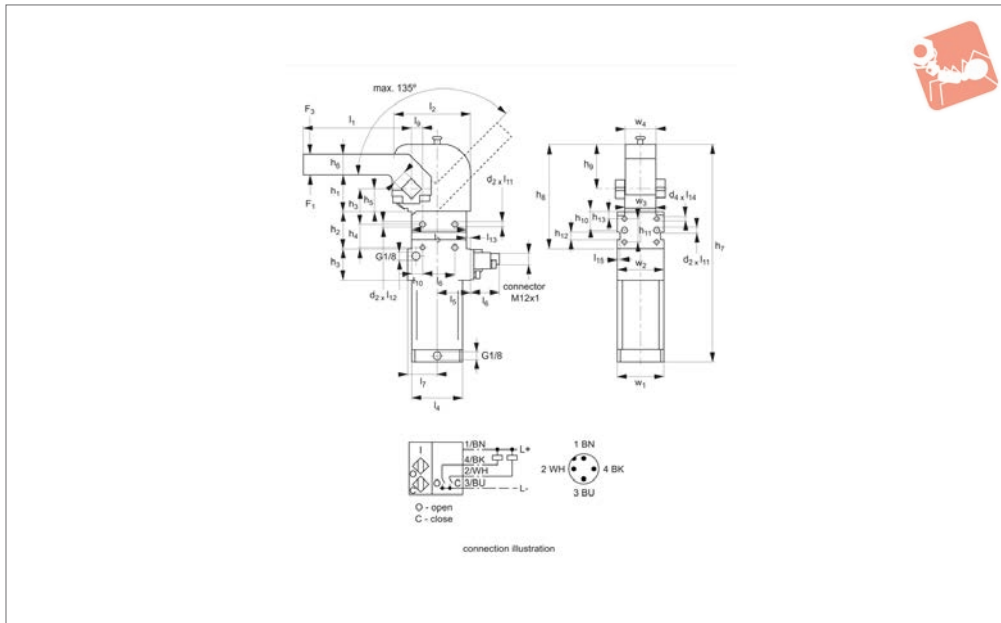




Heavy Pneumatic Toggle Clamp

dual acting

Pneumatic Toggle Clamps



47910.1

PNEUMATIC TOGGLE CLAMPS

Material

Case: aluminium. Max. operating pressure 6 bar. With continuously adjustable opening angle in the range 10° to 135°. With pneumatic end position cushioning and self-locking. With inductive query 24V as standard. **Clamp arm not included.**

Technical Notes

Accessories (not included in the standard

scope of delivery) are clamping arm no. 47912.W0210 - .W0218 centre, right and left, and connecting plug for inductive query.
Piston diameter: 40mm.
Clamping moment at 5 bar 120Nm.
Holding moment max. 380Nm.

Tips

These pneumatic toggle clamps are

suitable for use in material handling lines and on special machines. Opening and clamping position of the clamp can be controlled electrically, allowing integration into automated manufacturing processes.

Order No.	l_1	l_2	l_3	l_4	l_5	l_6	l_7	l_8	l_9	l_{10}	l_{11}	l_{12}	l_{13}	l_{14}	l_{15}	h_1	h_{10}	Weight
47910.W0001	117	83	60	55	36	35	34	32	± 0.05	± 0.05	8	6	4	12	3.5	40	± 0.05	1400
Order No.	h_{11}	h_{12}	h_{13}	h_2	h_3	h_4	h_5	h_6	h_7	h_8	h_9	d_1	d_2	w_1	w_2	w_3	w_4	
47910.W0001	25	8	± 0.1	40	± 0.05	25	25	22	235.5	113	48	tol. h_9	6	50	50	35	-0.5	

