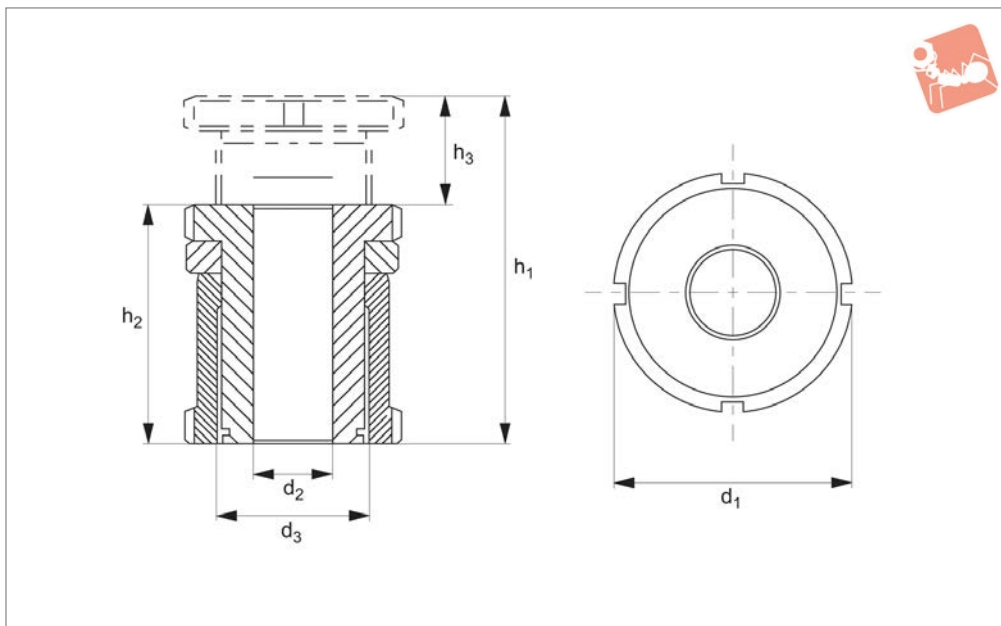




# Precision Adjuster with locking nut

## Precision Level- ling Adjusters



### 62080

PRECISION LEVELLING ADJUSTERS

#### Material

Steel (type 42 CrMo4 V, 1.7225) zinc plated or stainless steel A1 (A4 on request).

#### Technical Notes

After setting the height, the structure can be bolted down using a suitable 8,8

strength bolt.

The net load that the unit can carry is the maximum load less the tightening torque recommended for the bolt.

Designed for applications with a dynamic load, or where no fasteners are used. The

locknut enables locking of the adjuster in a pre-set position.

Order No.	Material	For bolt	$h_1$	$h_2$	$h_3$	$d_1$	$d_2$	$d_3$	Load with bolt kN max.	Load w/o bolt kN max.
62080.W0008	Steel	M 4	43	33	10	25	4.5	M15x1,0	36.00	40.00
62080.W0009	Steel	M 5	43	33	10	25	5.5	M15x1,0	33.40	40.00
62080.W0010	Steel	M 6	43	33	10	25	6.6	M15x1,0	30.70	40.00
62080.W0014	Steel	M 6	55	41	14	32	6.6	M20x1,0	55.70	65.00
62080.W0015	Steel	M 8	55	41	14	32	9.0	M20x1,0	48.00	65.00
62080.W0016	Steel	M10	55	41	14	32	11.0	M20x1,0	37.90	65.00
62080.W0017	Steel	M10	67	49	18	45	11.0	M30x1,5	92.90	120.00
62080.W0018	Steel	M12	67	49	18	45	13.5	M30x1,5	80.40	120.00
62080.W0019	Steel	M16	67	49	18	45	17.5	M30x1,5	45.50	120.00
62080.W0020	Steel	M16	86	63	23	58	17.5	M40x1,5	136.00	210.00
62080.W0021	Steel	M20	86	63	23	58	22.0	M40x1,5	90.00	210.00
62080.W0023	Steel	M24	86	63	23	58	26.0	M40x1,5	37.00	210.00
62080.W0030	Steel	M20	106	77	29	70	22.0	M50x1,5	210.00	330.00
62080.W0031	Steel	M24	106	77	29	70	26.0	M50x1,5	157.00	330.00
62080.W0032	Steel	M30	106	77	29	70	33.0	M50x1,5	53.00	330.00
62080.W0508	Stainless steel	M 4	43	33	10	25	4.5	M15x1,0	24.14	27.10
62080.W0509	Stainless steel	M 5	43	33	10	25	5.5	M15x1,0	22.24	27.10
62080.W0510	Stainless steel	M 6	43	33	10	25	6.6	M15x1,0	20.26	27.10
62080.W0514	Stainless steel	M 6	55	41	14	32	6.6	M20x1,0	36.56	43.40
62080.W0515	Stainless steel	M 8	55	41	14	32	9.0	M20x1,0	30.86	43.40
62080.W0516	Stainless steel	M10	55	41	14	32	11.0	M20x1,0	23.41	43.40
62080.W0517	Stainless steel	M10	67	49	18	45	11.0	M30x1,5	64.01	84.00
62080.W0518	Stainless steel	M12	67	49	18	45	13.5	M30x1,5	54.82	84.00
62080.W0519	Stainless steel	M16	67	49	18	45	17.5	M30x1,5	28.90	84.00
62080.W0520	Stainless steel	M16	86	63	23	58	17.5	M40x1,5	92.90	148.00
62080.W0521	Stainless steel	M20	86	63	23	58	22.0	M40x1,5	59.08	148.00
62080.W0523	Stainless steel	M24	86	63	23	58	26.0	M40x1,5	20.30	148.00
62080.W0530	Stainless steel	M20	106	77	29	70	22.0	M50x1,5	136.08	225.00
62080.W0531	Stainless steel	M24	106	77	29	70	26.0	M50x1,5	97.30	225.00
62080.W0532	Stainless steel	M30	106	77	29	70	33.0	M50x1,5	20.60	225.00

