

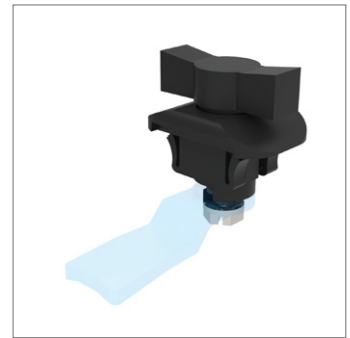
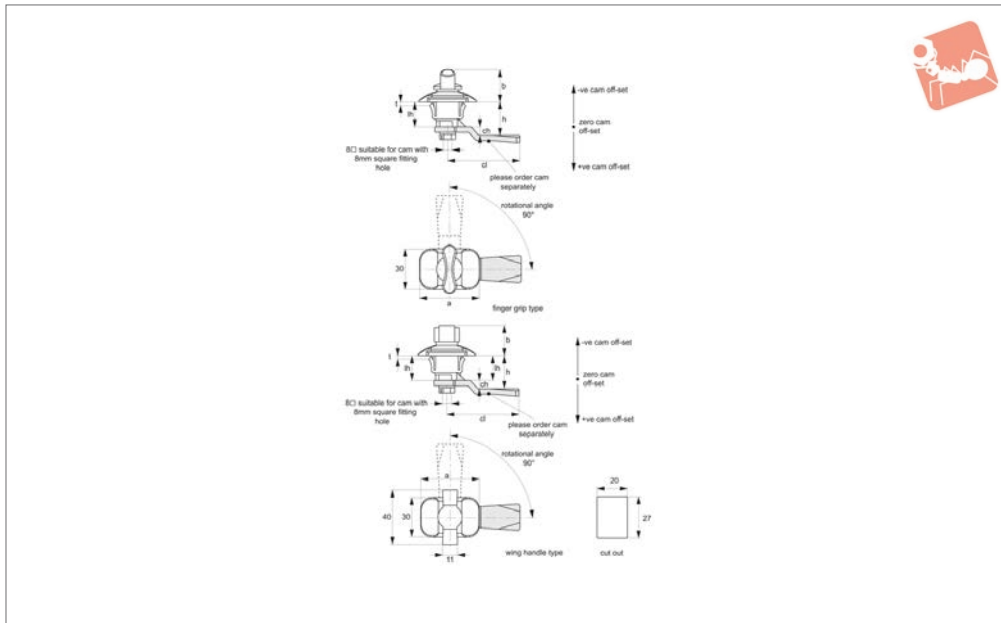


Panel Latches - Snap in

Fixed grip, wing handle, finger grip



Cam Latches



A1185

CAM LATCHES

Material

Body and Handle: Black plastic (PA6).

Not supplied: Cam - order separately.

Technical Notes

Order cam and key separately.

Cams: see suitable cam A0203, A0224 and A0240. Select „with projection“ cam type.

Dimensions ch and cl relate to cam. Use formula to calculate ch (required cam off-

set), and refer to cam selection chart;

$ch = h - lh$ where;

ch = required cam off-set/height.

h = grip length (distance between inside of latch face and front of cam).

lh = body length of cam latch/lock to be used (see product table below).

Suitable for panel thickness 0,8-2mm

Keys: see A0102.

Tips

Easy snap on fix mounting. Make cut out in panel as shown, and simply push in handle, snap on clips will spring back to securely mount handle.

Wing handle enables easy actuation without the need for a key.

Order No.	Handle	a	b	t	lh
A1185.AW0010	Wing Handle	43	22.5	0,8-2	18.5
A1185.AW0020	Finger Grip	43	24	0,8-2	18.5