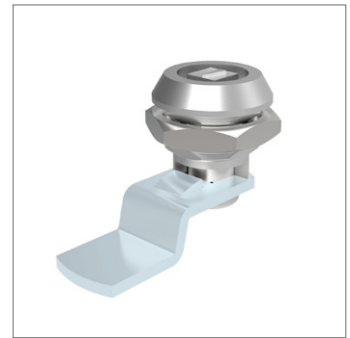
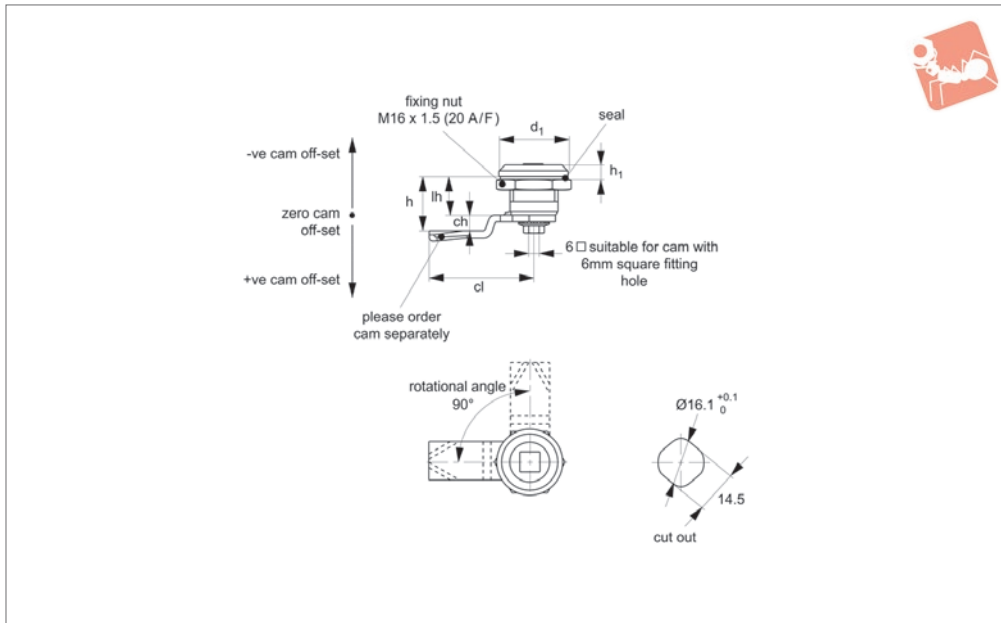
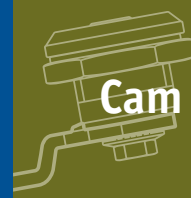


# Mini Cam Latches

insert driver - fixed grip

## Cam Latches



## A1261

CAM LATCHES

### Material

**Type one:** Body & insert: die cast zinc, chrome plated or black powder coated.

**Supplied with:** Keys: two per lock.

**Not supplied:** CAM - order separately.

### Technical Notes

Order cam and key separately.

**Cams:** see suitable cam A0261. Select „with projection“ cam type to prevent cam

rotating over 45°.

Dimensions  $ch$  and  $cl$  relate to cam. Use formula to calculate  $ch$  (required cam off-set), and refer to cam selection chart;

$ch = h - lh$  where;

$ch$  = required cam off-set/height.

$h$  = grip length (distance between inside of latch face and front of cam).

$lh$  = body length of cam latch/lock to be

used (see product table below).

**Keys:** see A0102.

### Tips

Mini cam latches for any application; securing doors, cabinets etc. Quarter-turn opening or closing.

### Important Notes

Sold subject to pack quantity.

Order No.	Insert driver	Finish	$d_1$	$h_1$	$lh$
A1261.AW0006	Square 6	Chrome	20	4	12.5
A1261.AW0078	Slot (2x4)	Chrome	20	4	12.5
A1261.AW0306	Square 6	Black Coated	20	4	12.5
A1261.AW0378	Slot (2x4)	Black Coated	20	4	12.5