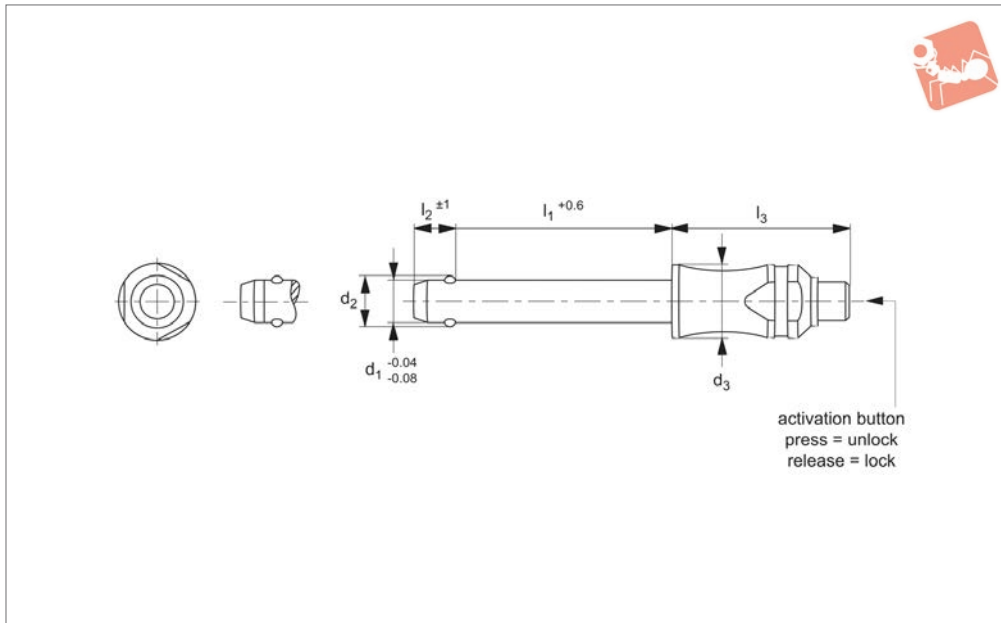




# Ball Lock Pins - Contoured Handle

self-locking - single acting - titanium

# Ball Lock Pins & Quick Release



**33196**

BALL LOCK PINS & QUICK RELEASE PINS

### Material

Pin: Titanium G5 (6A/4V DIN 3.7165). Offering extreme load capacity.  
 Ball: Ceramic.  
 Spring: Corrosion resistant alloy.

### Technical Notes

Pressing = unlocking.  
 Releasing = locking.  
 Single piece contoured design for limited

space applications.  
 Temperature resistance up to 400°C.  
 For quick fastening and locking of frequently repeated connections.  
 For suitable lanyards see part no. 33250. W0970 and .W0974 only. Easy install locating bushes available see part no. 33248.

### Tips

**Single piece design, no danger of parts coming away from pin - ideal for applications with F.O.B (Foreign Object Body) issues.**

### Important Notes

\*Shearing resistance similar to DIN 50141.

Order No.	d <sub>1</sub>	l <sub>1</sub>	d <sub>2</sub>	d <sub>3</sub>	l <sub>2</sub>	l <sub>3</sub>	Location hole dia. tol. H11	Shearing resistance, double kN min.	Weight g
33196.W0022	6	10	7.0	10	7.0	26.2	6	23	7
33196.W0024	6	20	7.0	10	7.0	26.2	6	23	8
33196.W0026	6	30	7.0	10	7.0	26.2	6	23	9
33196.W0028	6	40	7.0	10	7.0	26.2	6	23	10
33196.W0030	6	50	7.0	10	7.0	26.2	6	23	11
33196.W0034	8	20	9.6	14	8.2	33.1	8	43	19
33196.W0036	8	30	9.6	14	8.2	33.1	8	43	21
33196.W0038	8	40	9.6	14	8.2	33.1	8	43	23
33196.W0040	8	50	9.6	14	8.2	33.1	8	43	25
33196.W0044	10	20	12.0	14	9.6	33.1	8	46	23
33196.W0046	10	30	12.0	14	9.6	26.2	10	69	26
33196.W0048	10	40	12.0	14	9.6	26.2	10	69	29
33196.W0050	10	50	12.0	14	9.6	26.2	10	69	32
33196.W0052	10	60	12.0	14	9.6	26.2	10	69	36

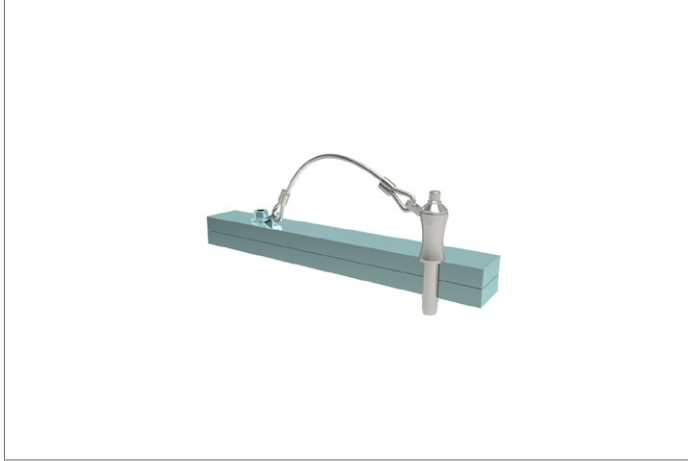
# Ball Lock Pins & Quick Release



## Ball Lock Pins - Contoured Handle self-locking - single acting - titanium



BALL LOCK PINS & QUICK RELEASE PINS





# Wixroyd Ball Lock Pins

applications

33060 - 33250

Positioning Elements

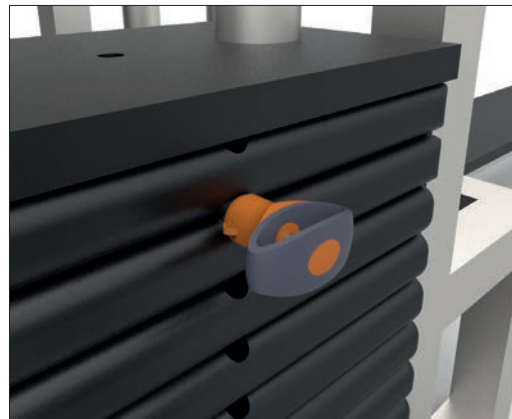
## Sound Rigging Systems

Ball lock pins on a sound rigging system. Offering secure fixing with high shear forces and easy fitting for operators at heights.

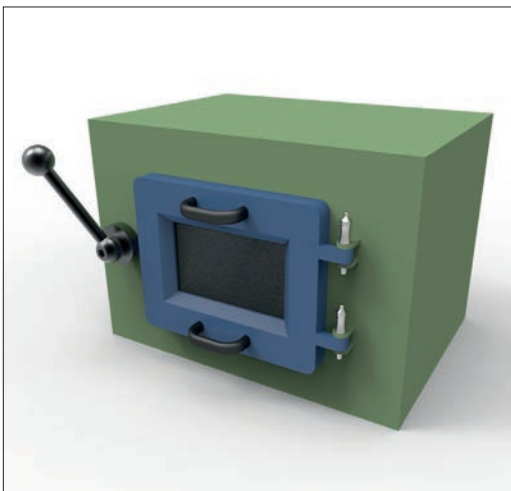
In addition full black powder coating of grip and actuation button eliminates glare from other stage lighting.



## Gym Equipment



## Scientific and Medical



BALL LOCK PINS & QUICK RELEASE PINS

ov-W33060.BK-A-TOR1706-W33250-A-TLA1066-a-rmh - Updated - 27-10-2022