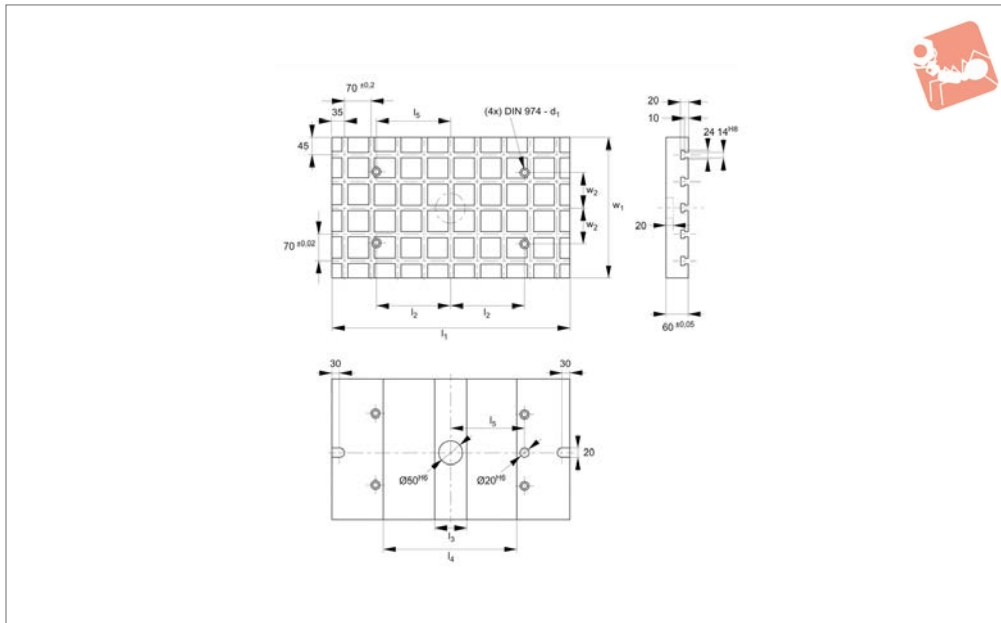


T-Slot Base Plate

rectangular

Base Plates & Clamping



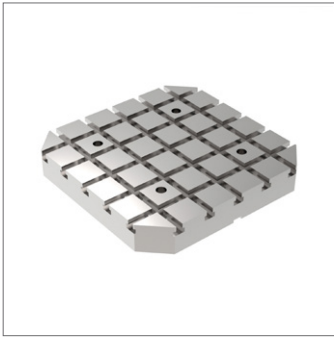
19580

BASE PLATES & CLAMPING ANGLES

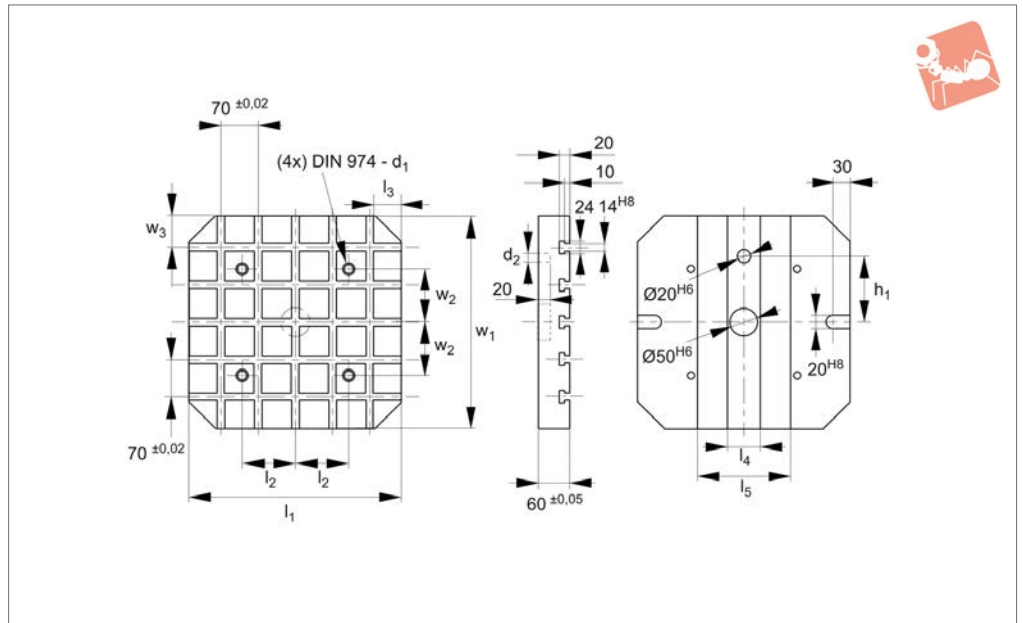
Material

High tensile tool steel.

Order No.	$l_1 \times w_1$	w_2 ± 0.2	l_2 ± 0.2	l_3	l_4	l_5 $\pm 0,013$	d_1	Number of T-slots	Weight kg
19580.W0300	420x230	100	150	70	240	150	12	3x6	38
19580.W0400	490x300	100	200	70	310	200	12	4x7	57
19580.W0500	630x370	100	200	70	350	200	12	5x9	92



19582



Material

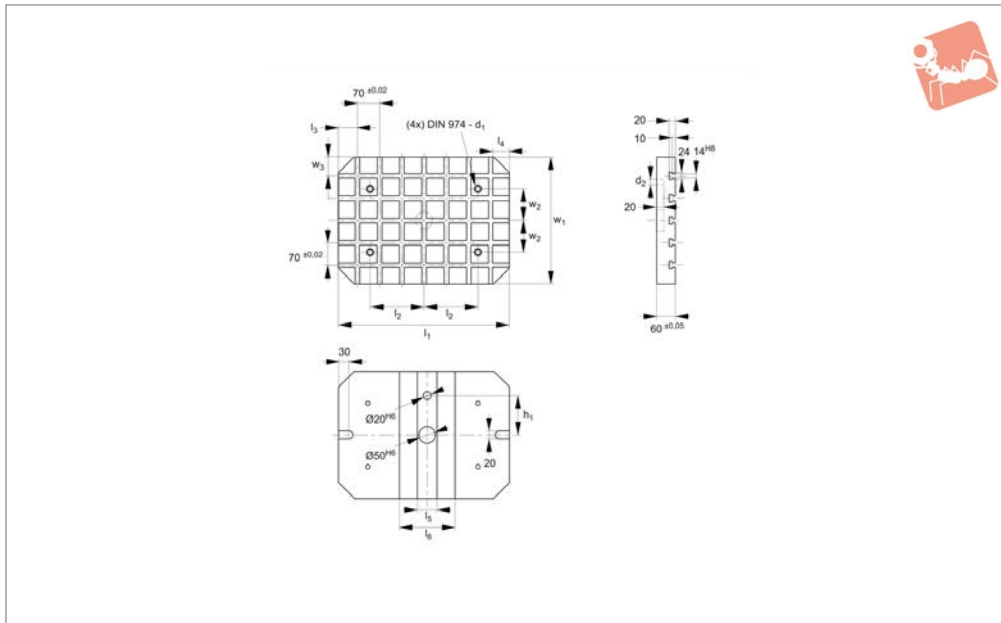
High tensile tool steel.

Order No.	$w_1 \times l_1$	$w_2 \pm 0.2$	w_3	$l_2 \pm 0.2$	l_3	l_4	l_5	$h_1 \pm 0.013$	d_1	d_2 tol. h6	Number of T-slots	Weight kg
19582.W0700	400x400	100	60	100	50	65	175	150	12	20	5x5	61
19582.W0800	500x500	200	40	200	60	70	310	200	12	20	7x7	95
19582.W0900	630x630	200	35	200	70	70	340	200	16	25	9x9	152



T- Slot Base Plate rectangular

Base Plates & Clamping



19584

BASE PLATES & CLAMPING ANGLES

Material

High tensile tool steel.

Order No.	$w_1 \times l_1$	w_2 ± 0.2	w_3 ± 0.02	l_2 ± 0.2	l_3 ± 0.02	l_4	l_5	l_6	h_1 ± 0.013	d_1	d_2	Number of T-slots	Weight kg
19584.W0300	400x500	100	60	200	40	50	70	310	150	12	20	5x7	77
19584.W0500	500x630	200	40	200	35	60	70	340	200	12	20	7x9	120