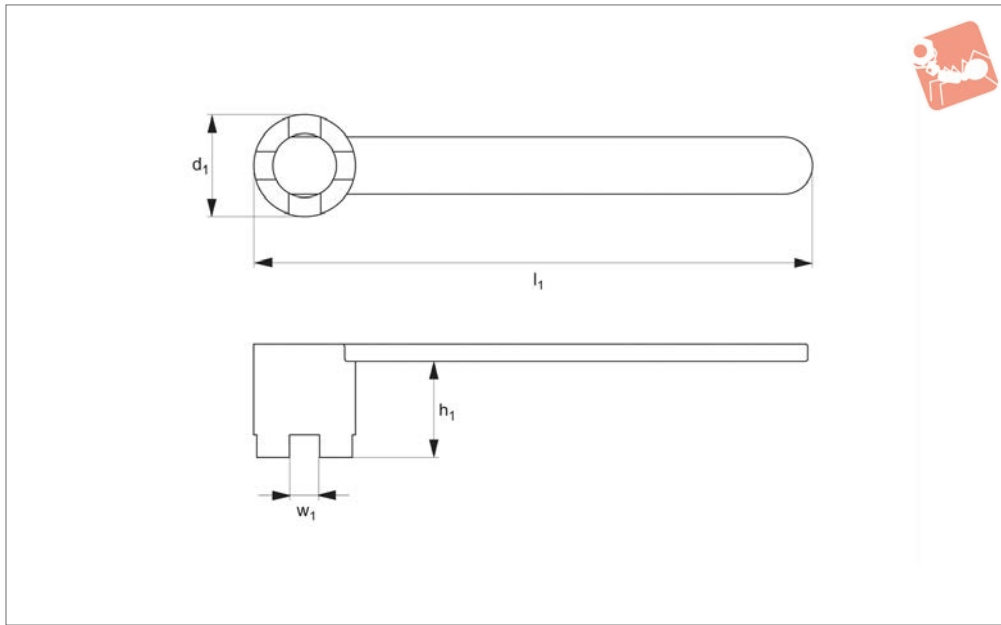




# Spanner for Shell and Mill Arbors

for screws to DIN 6367



**92100**

### Material

Steel (C35/C45) hardened, tempered, with brown finish.

### Technical Notes

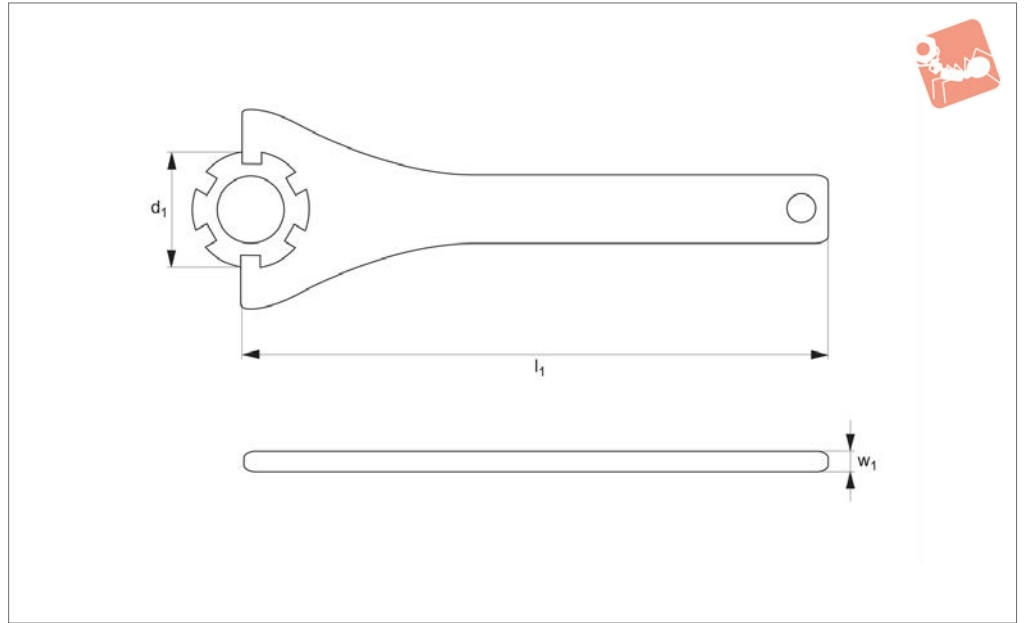
Nominal size refers to diameter of mandrel on milling arbor.

Order No.	Size	For nut to DIN 6367	$d_1$	$h_1$	$l_1$	$w_1$	Weight g
92100.W0013	13	M 6	18	16	160	6.1	75
92100.W0016	16	M 8	22	20	180	8.1	110
92100.W0022	22	M10	28	25	200	10.1	200
92100.W0027	27	M12	35	32	225	12.1	400
92100.W0032	32	M16	42	36	250	16.1	570
92100.W0040	40	M20	52	40	280	20.2	800
92100.W0050	50	M24	63	45	315	24.2	1100
92100.W0060	60	M30	76	50	355	28.2	1750





**92120**



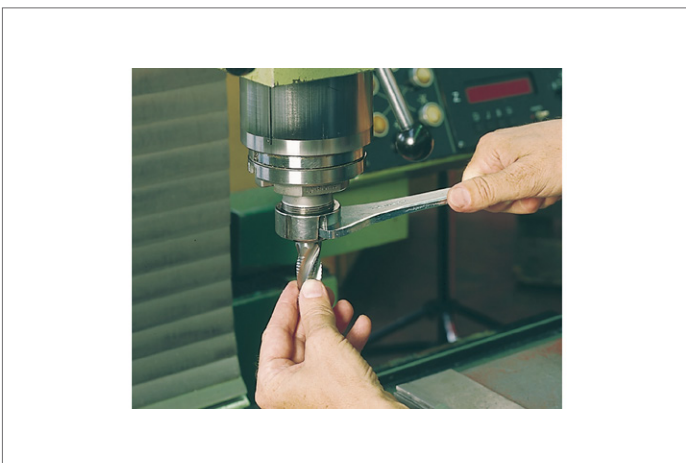
**Material**

Steel (C35/C45), hardened, zinc plated.

**Technical Notes**

For use on clamping nuts to DIN 6499D.

Order No.	Size	For nut to DIN 6499D	d <sub>1</sub>	l <sub>1</sub>	w <sub>1</sub>	Weight g
92120.W0016	16	16	32	163	4	125
92120.W0020	20	20	35	183	5	190
92120.W0025	25	25	42	203	6	255
92120.W0032	32	32	50	253	6	359
92120.W0040	40	40	63	285	6	480
92120.W0050	50	-	78	350	7	810

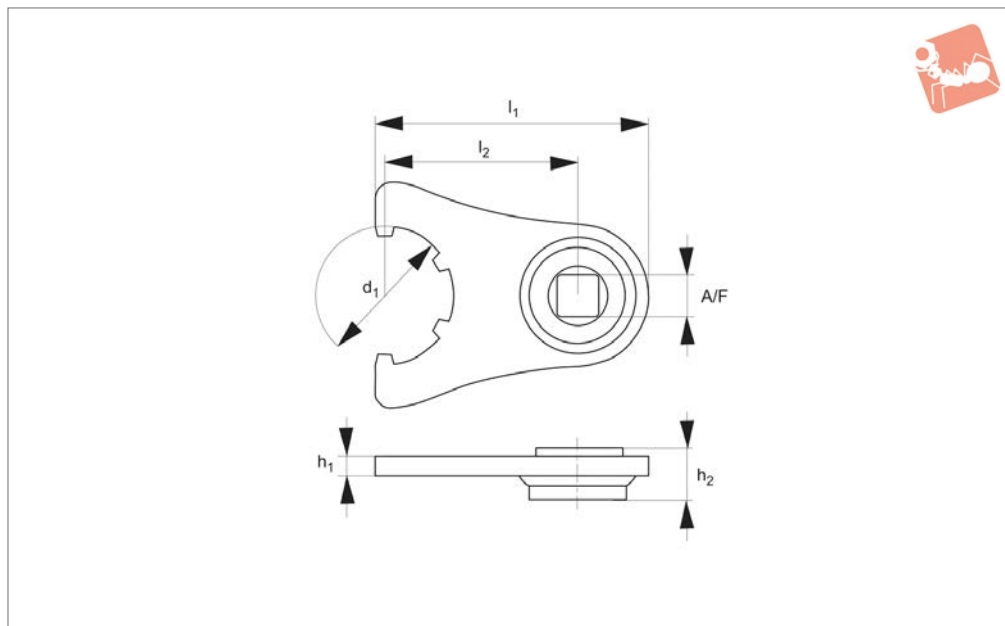




# Collet Spanner

for use with torque wrench

## Spanners & Hook Spanners



### 92121

SPANNERS & HOOK SPANNERS

#### Material

Special steel, hardened and zinc-plated.

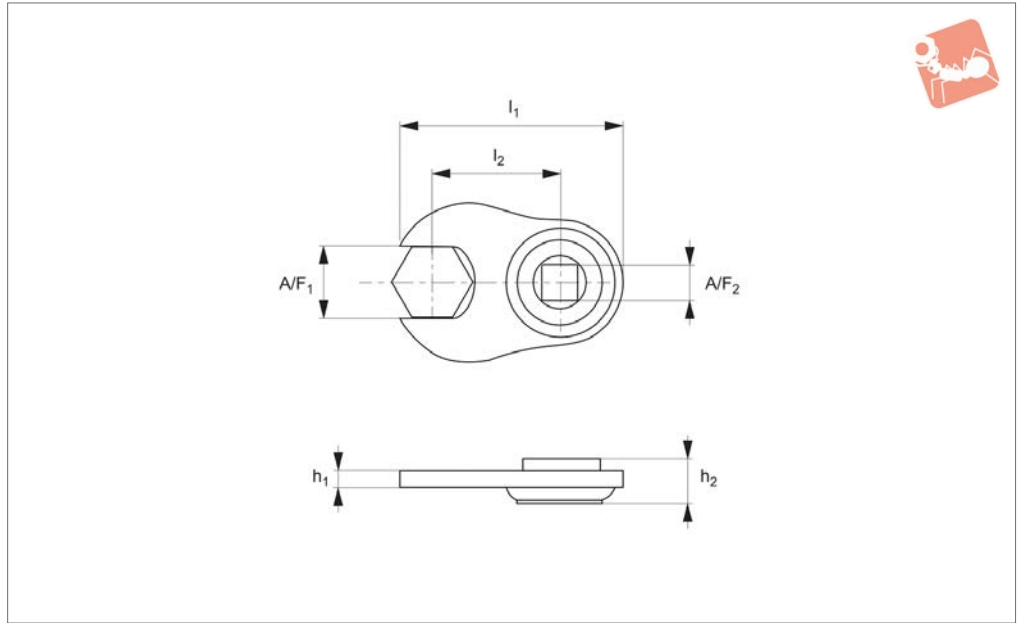
#### Technical Notes

Controlled tightening prevents damage to spindle changing tools on machines.

Order No.	Size	A/F	d <sub>1</sub>	h <sub>1</sub>	h <sub>2</sub>	l <sub>1</sub>	l <sub>2</sub>	Weight g
92121.W0016	16	1/2"	32	5	16	69	45	140
92121.W0025	25	1/2"	42	6	16	85	60	200
92121.W0032	32	1/2"	50	6	16	85	60	215
92121.W0040	40	1/2"	63	6	16	85	60	220



**92122**



SPANNERS & HOOK SPANNERS

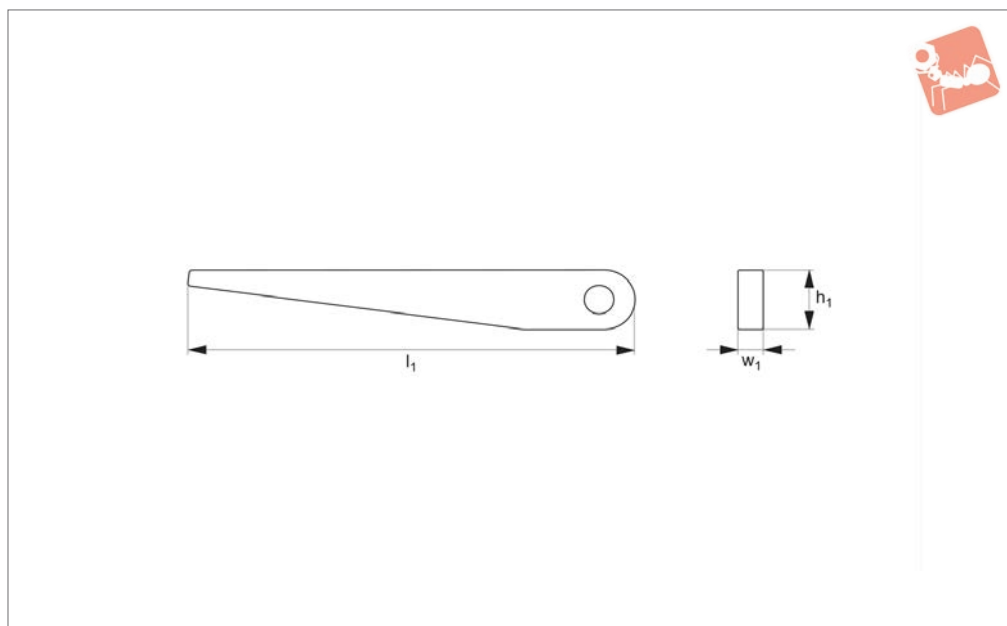
### Material

Special steel, hardened and zinc-plated.

### Technical Notes

Controlled tightening prevents damage to spindle changing tools on machines.

Order No.	$A/F_1$	$A/F_2$	$h_1$	$h_2$	$l_1$	$l_2$	Weight g
92122.W0025	25	1/2"	6	16	78	45	170
92122.W0036	36	1/2"	7	16	101	60	255
92122.W0046	46	1/2"	8	16	108	60	340



## 92200

SPANNERS & HOOK SPANNERS

### Material

Steel (C35/C45), hardened and brown finish.

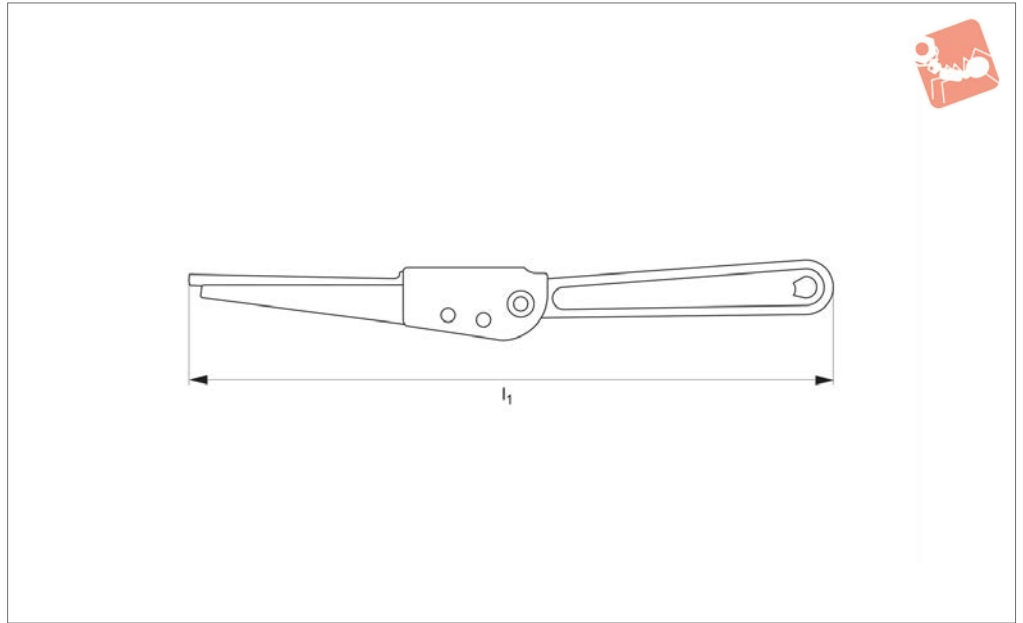
### Technical Notes

Produced to DIN 317.  
For machine tapers DIN 228.

Order No.	Size	Morse taper	$h_1$	Taper metric	$l_1$	$w_1$	Weight g
92200.W0000	0	0	12	4 & 6	90	3	14
92200.W0001	1	1 & 2	20	-	140	5	70
92200.W0003	3	3	25	-	190	7	150
92200.W0004	4	4	30	-	225	10	310
92200.W0005	5	5 & 6	35	-	265	15	650



92220



**Material**

Body: steel (C35/C45), hardened and blackened.  
Grip: powder coated, red.

With finger protection.

**Tips**

This semi-automatic drill drift simplifies

the removal of machine tapers (to DIN 228).

Order No.	For morse taper	$l_1$	Weight g
92220.W0003	1-3	330	370
92220.W0006	4-6	380	530

