

12108.1

LOW PROFILE SIDE CLAMPING

Material

Clamp: steel AISI 4140, HRC 33-39, blackened.

Plate: stainless steel (AISI 304, 1.4301).

Technical Notes

Extremely small and low height cam clamp offering upto 14 kN. clamping force. Ideal for multi-component fixtures.

Clamp is actuated with use of a hexagon key.

To avoid any deformation to work piece during clamping, select our clamping plate type.

Also available with an easy to actuate clamping handle model - see parts 12108.W2012 through .W2116.

Spare clamping plates can be ordered separately, see part no. 12108.W5010 through .W5016.

Tips

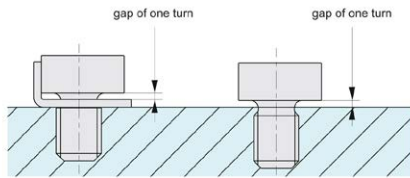
To install, drill and tap required hole to dimension d_2 and space hole to dimension w_5 away from workpiece surface (or $w_5 + 1$ if using clamping plate).

Fully tighten spiral clamp, then slacken off by one turn. Mount workpiece and then re-tighten clockwise to clamp workpiece.

Place a stop to the right of the workpiece to prevent movement.

Order No.	Type	d_1	d_2	h_1	h_2	l_1	w_1	w_2	Weight g
12108.W0010	W/o Clamping Plate	10	M 6x1,00	5	-	9	-	-	6
12108.W0012	W/o Clamping Plate	12	M 8x1,25	6	-	12	-	-	11
12108.W0014	W/o Clamping Plate	14	M10x1,50	7	-	15	-	-	19
12108.W0016	W/o Clamping Plate	16	M12x1,75	8	-	18	-	-	30
12108.W0110	With Clamping Plate	10	M 6x1,00	5	6	9	10	13.0	7
12108.W0112	With Clamping Plate	12	M 8x1,25	6	7	12	12	15.5	13
12108.W0114	With Clamping Plate	14	M10x1,50	7	8	15	14	18.0	21
12108.W0116	With Clamping Plate	16	M12x1,75	8	9	18	16	20.0	33

Order No.	w_3	w_4	w_5	Stroke s_1	Stroke s_2	Stroke s_3	t_1	A/F	Torque to Nm max.	Clamping force kN max.
12108.W0010	6.8	5	5.9	1.8	0.9	0.9	-	4	7.4	2.2
12108.W0012	8.2	6	7.1	2.2	1.1	1.1	-	5	18.0	4.7
12108.W0014	9.5	7	8.3	2.5	1.3	1.2	-	6	35.0	7.9
12108.W0016	10.9	8	9.5	2.9	1.5	1.4	-	8	60.0	14.0
12108.W0110	6.8	5	5.9	1.8	0.9	0.9	1	4	7.4	2.2
12108.W0112	8.2	6	7.1	2.2	1.1	1.1	1	5	18.0	4.7
12108.W0114	9.5	7	8.3	2.5	1.3	1.2	1	6	35.0	7.9
12108.W0116	10.9	8	9.5	2.9	1.5	1.4	1	8	60.0	14.0



tighten spiral cam clamp fully and loosen it about one turn
then mount to workpiece



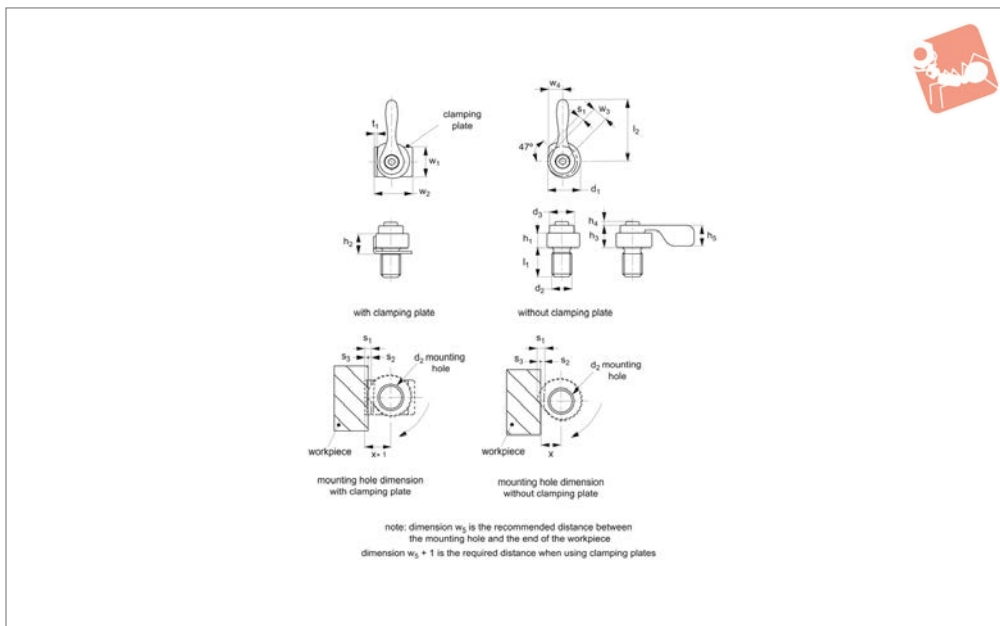
Spiral Cam Clamps actuating handle

Low Profile Side Clamping



12108.2

LOW PROFILE SIDE CLAMPING



Material

Clamp: steel (AISI 4140), HRc 33-39, blackened.

Plate: stainless steel (AISI 304, 1.4301).

Technical Notes

Extremely small and low height cam clamp offering upto 14 kN. clamping force. Ideal for multi-component fixtures.

Clamp is actuated via small handle/lever.

To avoid any deformation to workpiece

during clamping, select our with clamping plate type.

Also available in model actuated with use of hexagon key - see parts 12108.W0010 through .W0116.

Spare clamping plates can be ordered separately, see part no. 12108.W5010 through .W5016.

Tips

To install, drill and tap required hole to

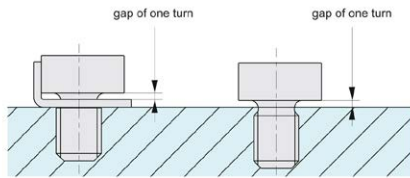
dimension d_2 and space hole to dimension w_5 away from workpiece surface (or $w_5 + 1$ if using clamping plate).

Fully tighten spiral clamp, then slacken off by one turn. Mount workpiece and then re-tighten clockwise to clamp workpiece.

Place a stop to the right of the workpiece to prevent movement.

Order No.	Type	d_1	d_2	d_3	h_1	h_2	h_3	h_4	h_5	l_1	Weight g
12108.W2012	W/o Clamping Plate	12	M 8x1,25	10	6	-	9	1.5	8.5	12	17
12108.W2014	W/o Clamping Plate	14	M10x1,50	12	7	-	11	1.8	10.0	15	30
12108.W2016	W/o Clamping Plate	16	M12x1,75	14	8	-	13	2.2	12.0	18	51
12108.W2112	With Clamping Plate	12	M 8x1,25	10	6	7	9	1.5	8.5	12	19
12108.W2114	With Clamping Plate	14	M10x1,50	12	7	8	11	1.8	10.0	15	32
12108.W2116	With Clamping Plate	16	M12x1,75	14	8	9	13	2.2	12.0	18	54

Order No.	l_2	w_1	w_2	w_3	w_4	w_5	Stroke s_1	Stroke s_2	Stroke s_3	t_1	Torque to Nm max.	Clamping force kN max.
12108.W2012	25	-	-	8.2	6	7.1	2.2	1.1	1.1	-	18	4.7
12108.W2014	30	-	-	9.5	7	8.3	2.5	1.3	1.2	-	35	7.9
12108.W2016	40	-	-	10.9	8	9.5	2.9	1.5	1.4	-	60	14.0
12108.W2112	25	12	15.5	8.2	6	7.1	2.2	1.1	1.1	1	18	4.7
12108.W2114	30	14	18.0	9.5	7	8.3	2.5	1.3	1.2	1	35	7.9
12108.W2116	40	16	20.0	10.9	8	9.5	2.9	1.5	1.4	1	60	14.0

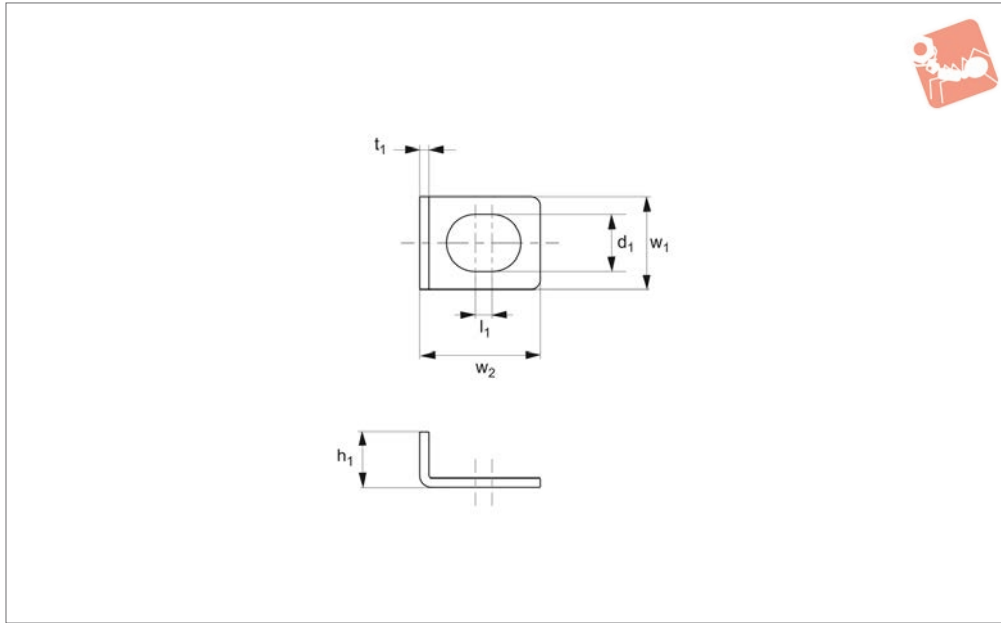


tighten spiral cam clamp fully and loosen it about one turn
then mount to workpiece



Clamping Plate for spiral cam clamps 12108

Low Profile Side Clamping



12108.3

LOW PROFILE SIDE CLAMPING

Material

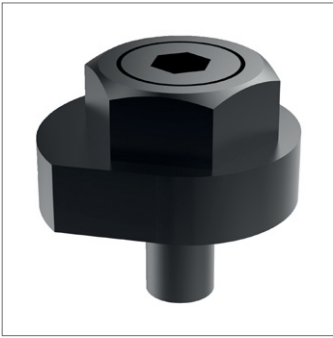
Stainless steel (AISI 304, 1.4301).

no. 12108. Use plates to avoid any deformation to workpiece during clamping.

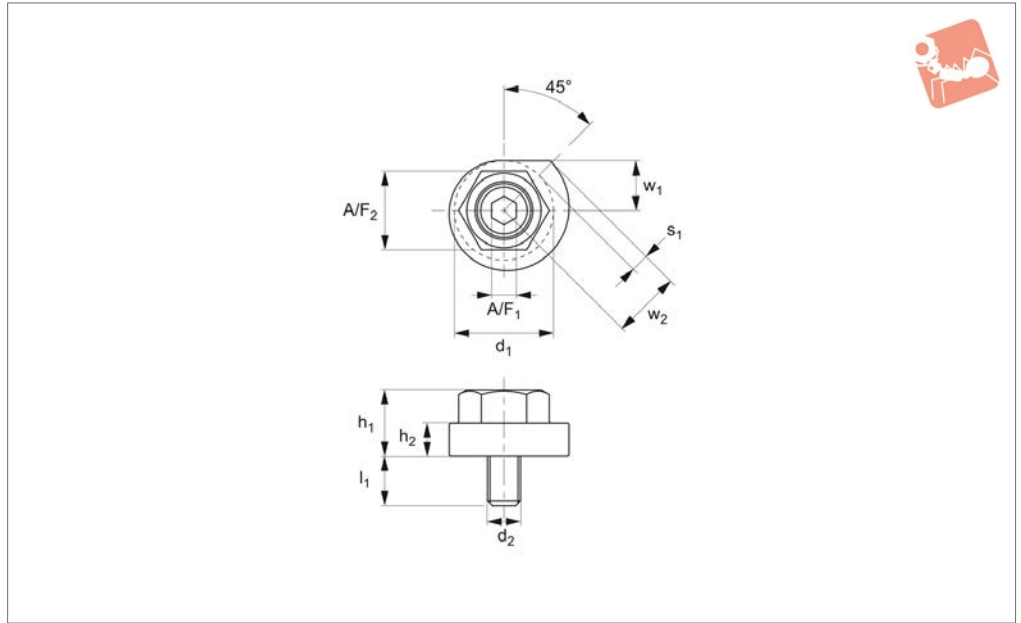
Technical Notes

Clamping plates for spiral cam clamp, part

Order No.	d ₁	For spiral clamp size d ₂	h ₁	l ₁	w ₁	w ₂	t ₁	Weight g
12108.W5010	6.2	10	6	1.8	10	13.0	1	17
12108.W5012	8.2	12	7	2.2	12	15.5	1	17
12108.W5014	10.2	14	8	2.6	14	18.0	1	30
12108.W5016	12.2	16	9	2.9	16	20.0	1	51



12109



Material

Steel (AISI 4140), HRc 33-39, blackened.

Technical Notes

Simple and robust cam clamp. Easy to

install. Actuated with spanner.

Tips

To install: insert flanged collar and locking screw into cam body. Tighten locking screw

to fix cam in position. Load component, then use spanner to turn and actuate cam to clamp up to workpiece surface.

Order No.	d_1	d_2	h_1	h_2	l_1	w_1	w_2	Stroke s_1	A/F_1	A/F_2	Torque to Nm max.	Clamping force kN max.	Weight g
12109.W0024	24	M 8x1,25	16	8	12	12	16.4	4.4	6	19	50	5.2	55
12109.W0030	30	M10x1,50	20	10	15	15	20.5	5.5	8	24	75	8.0	110
12109.W0034	34	M12x1,75	24	12	18	17	23.2	6.2	10	27	90	9.3	185

