

15010

SCREW JACKS

Material

Steel, blackened.

movement when a workpiece is changed, and for mounting screw jacks vertically.

tely.

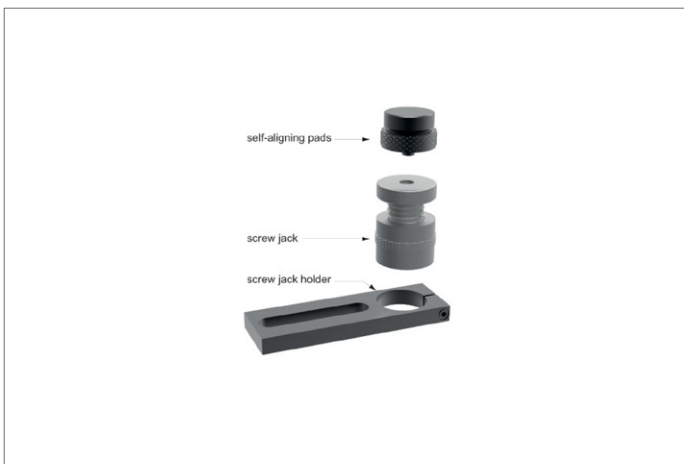
Technical Notes

Used to fix screw jacks in place to prevent

Tips

Please order screw jacks no. 15000 separa-

Order No.	For screw jacks no. 15000	d ₁	d ₂	l ₁	l ₂	l ₃	l ₄	w ₁	Weight g
15010.W0232	Size 50	31	18.5	175	90	35	30	40	518
15010.W0250	Size 52,70,100	50	20.5	190	90	46	38	60	891
15010.W0270	Size 140	69	24.5	210	90	54	48	80	1300





15030
Spherical



15040
Pin Type



15050
Vee Type



15060
Centering Pin



15070
Cylindrical



15080
Self-Aligning



15090
Pivot Ball



15000
Screw Jack



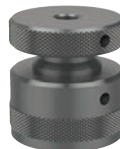
15042
Locating Pad



15062
Centering Pad



15002
Screw Jack



These screw and aligning jacks offer a broad range of applications. Due to their robust construction, the screw jacks function securely and precisely, with infinite adjustment even under heavy loads.

- Safe and reliable clamp supports for heights from 38 to 1250mm.
- Accurate and safe supporting and setting of any workpiece in various levels and heights.
- Aluminium screw jacks for delicate machine tables, surface plates and CMM tables.
- Magnetic screw jacks for horizontal and vertical supporting and setting.

Table of Suitability for Screw Jack Attachments

Attachments	Suited to screw jacks with centering pin - plain bore	Suitable screw jack
15030	Ø12	15200 14130
15040		15220 14140
15050		15000 15300
15060		15000 15320
15070		15100 15360
15080		15120 15500
15090		

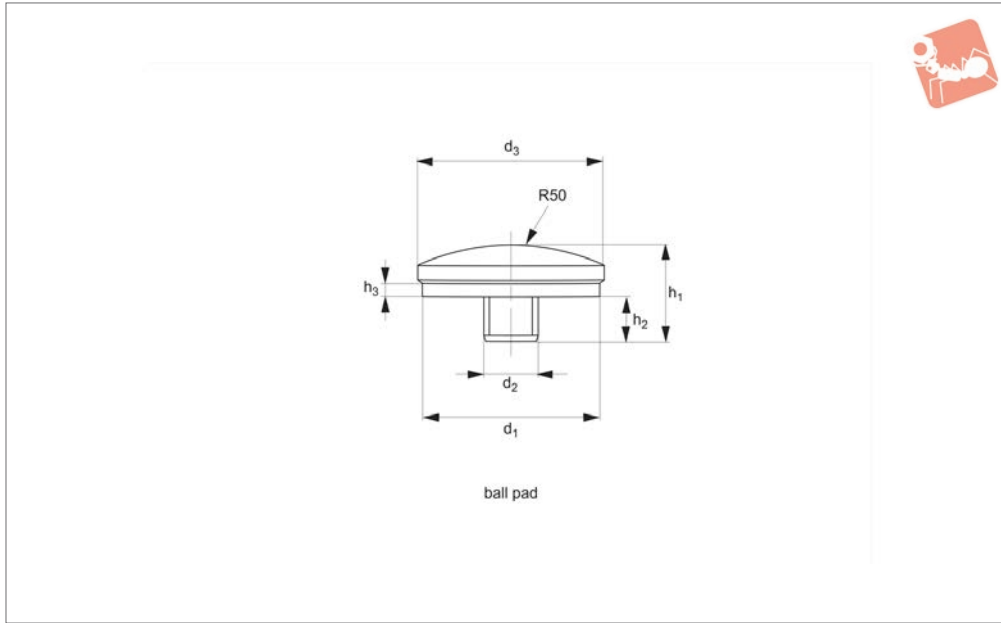
Attachments	Suited to screw jacks with either / or centering pin - threaded	Suitable screw jack
15042	M 12	15002.W0052 / W0070 / W0100
15062	M 10	15320 15360
15062	M 12	15002.W0052 / W0070 / W0100

Attachments	Base thread	Suitable screw jack
15042	M38 x 2	15000.W0052 / W0070 / W0100
15062		15000.W0052 / W0070 / W0100
		15100 14140



Locating Pad - Spherical for screw jacks

Screw Jacks



15030

SCREW JACKS

Material

Steel, hardened, blackened and burnished.

15300.

See technical pages for the table of screw jack suitability.

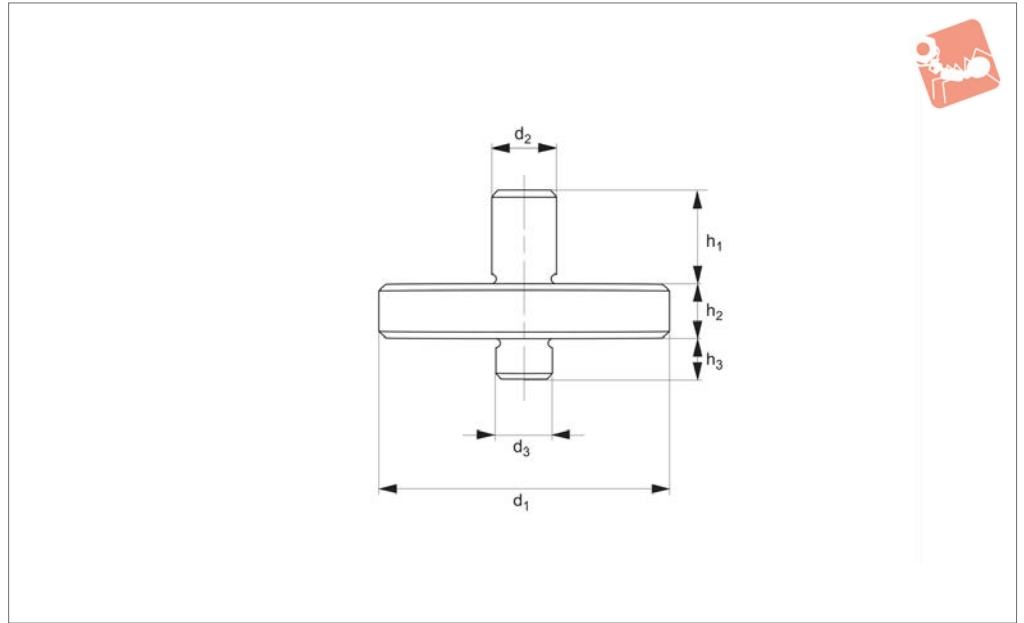
Tips

Can be used with screw jacks 15000 and

Order No.	d ₁	d ₂	d ₃	h ₁	h ₂	h ₃	Weight g
15030.W0037	35	12	37	18	8	3	90



15040



Material

Steel, hardened and blackened.

15300.

See technical pages for the table of screw jack suitability.

Tips

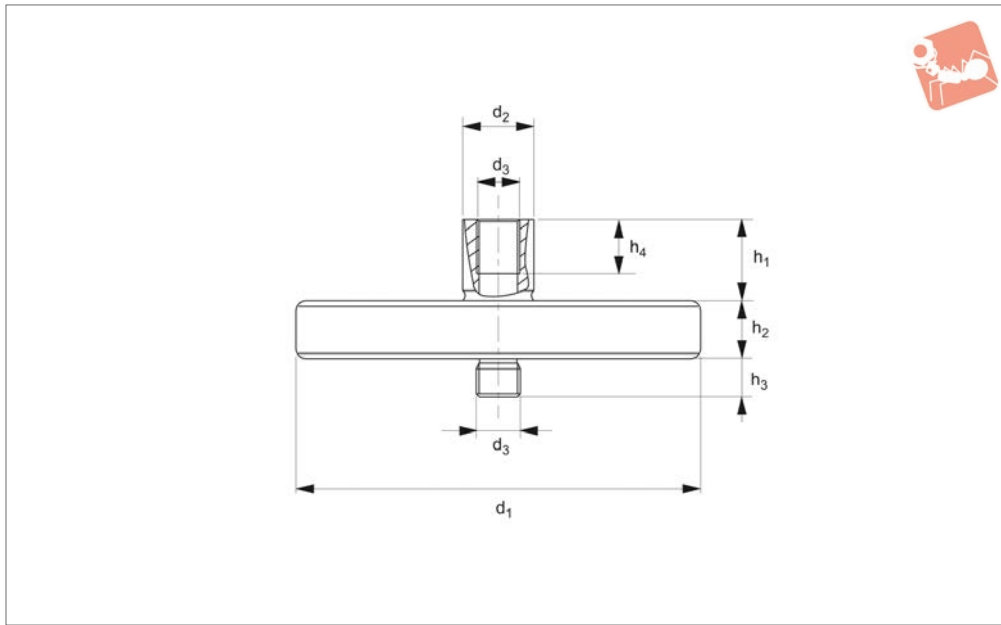
Can be used with screw jacks 15000 and

Order No.	d_1	d_2	d_3	h_1	h_2	h_3	Weight g
15040.W0163	63	14	12	15	12	8	310
15040.W0167	78	25	12	19	15	8	650



Locating Pad - Pin Type M12 for screw jacks

Screw Jacks



15042

SCREW JACKS

Material

Steel, hardened, enamelled and blackened.

Technical Notes

Has threaded centering pin (M12) for secu-

ring to compatible screw jacks with corresponding M12 threaded centering holes.

Tips

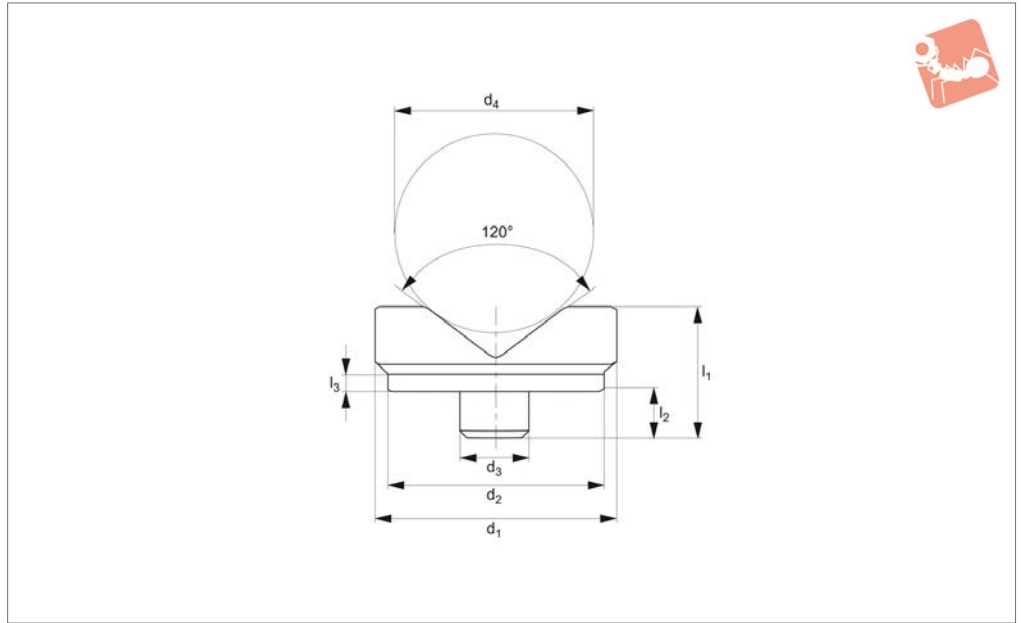
Do not adjust screw jack when under load. See technical pages for the table of screw

jack suitability.

Order No.	d_1	d_2	d_3	h_1	h_2	h_3	h_4	Weight g
15042.W0012	72	22	M12	20	12	12	15	601



15050



SCREW JACKS

Material

Steel, hardened and blackened.

15300.

See technical pages for the table of screw jack suitability.

Tips

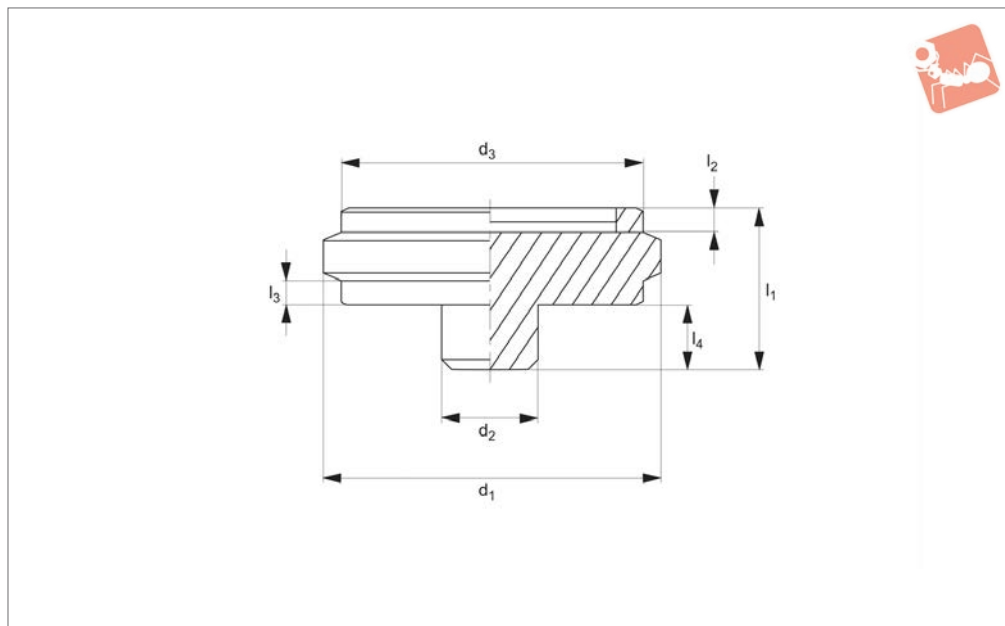
Can be used with screw jacks 15000 and

Order No.	d ₁	d ₂	d ₃	d ₄ min.	d ₄ max.	l ₁	l ₂	l ₃	Weight g
15050.W0045	45	42	12	10	50	23	8	3	120
15050.W0065	65	62	12	22	100	38	8	3	545



Centering Pad for screw jacks

Screw Jacks



15060

SCREW JACKS

Material

Steel, hardened and blackened.

15300.

See technical pages for the table of screw jack suitability.

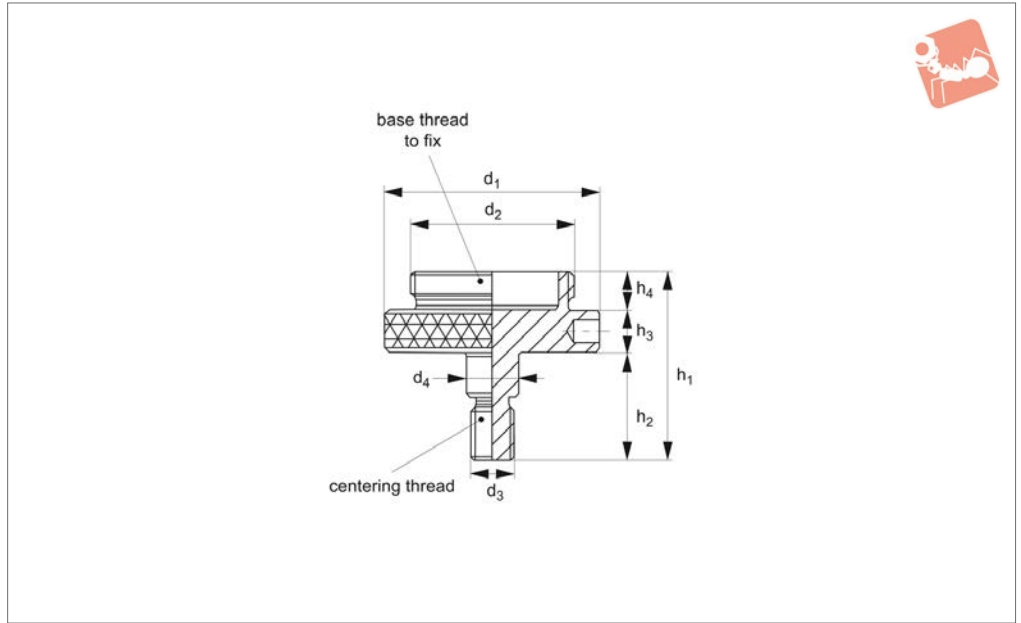
Tips

Can be used with screw jacks 15000 and

Order No.	d_1	d_2	d_3	l_1	l_2	l_3	l_4	Weight g
15060.W0145	45	12	35.8	19	3	8	8	120



15062



SCREW JACKS

Material

Steel, hardened and blackened.

Technical Notes

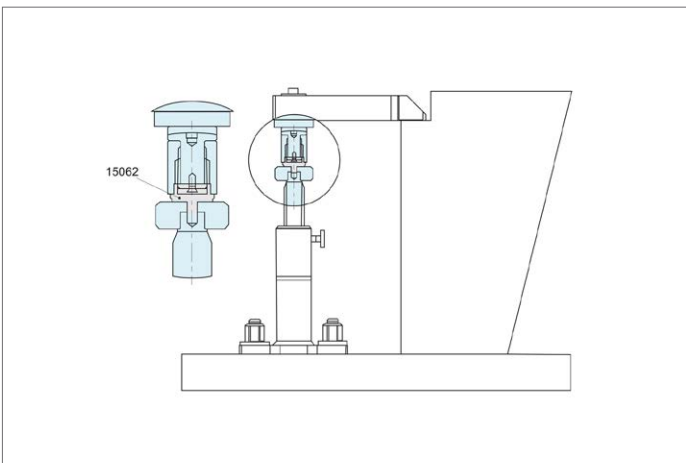
Has threaded centering pin (M12) for securing to compatible screw jacks with corre-

sponding M12 threaded centering holes. Also equipped with M38x2 male thread for fixing screw jacks with corresponding M38x2 thread in their base.

Tips

Do not adjust screw jacks when under load. See technical pages for the table of screw jack suitability.

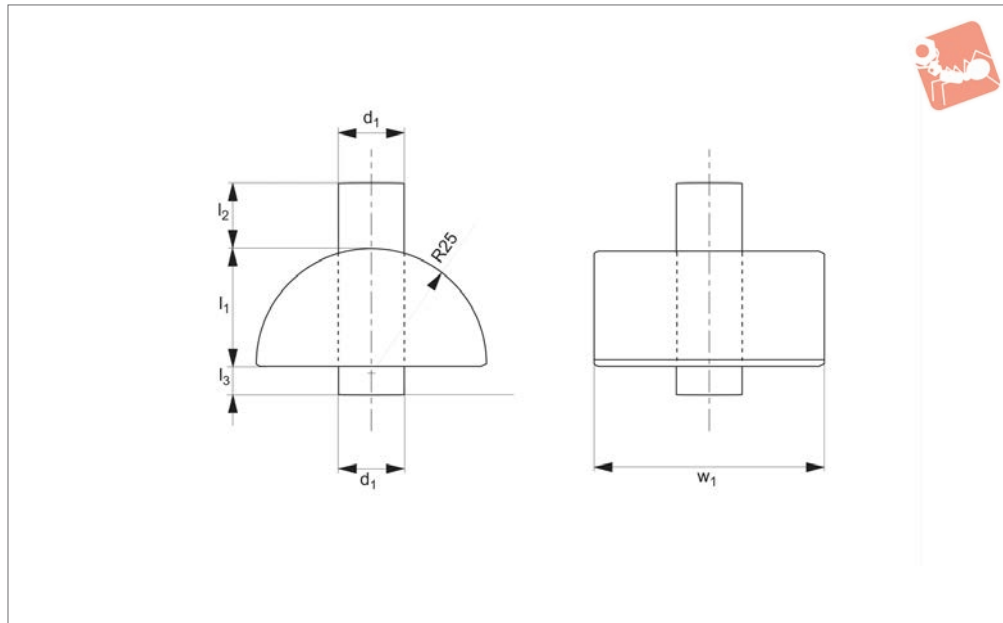
Order No.	d ₁	d ₂	d ₃	d ₄	h ₁	h ₂	h ₃	h ₄	Weight g
15062.W0010	50	M38x2	M10	11.9	33	25	10	9	200





Locating Pad - Domed for screw jacks

Screw Jacks



15070

SCREW JACKS

Material

Steel, hardened and blackened.

15300.

See technical pages for the table of screw jack suitability.

Tips

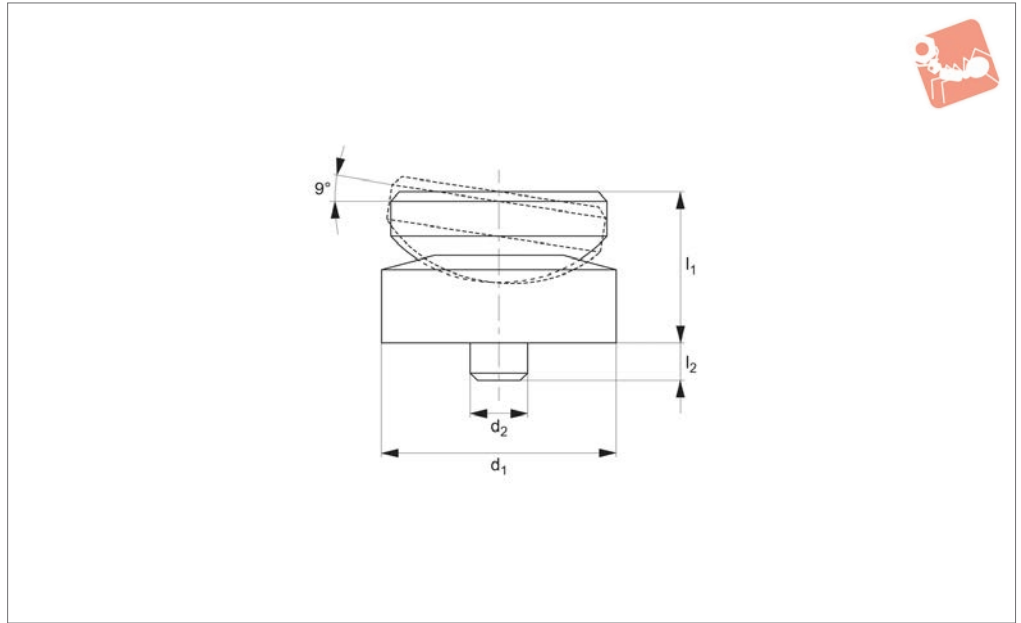
Can be used with screw jacks 15000 and

Order No.	d_1	l_1	l_2	l_3	w_1	Weight g
15070.W0050	12	23	19	8	50	370





15080



SCREW JACKS

Material

Steel, case-hardened, blackened.

Technical Notes

These self-aligning pads ensure that the

bearing surfaces between the clamp/work-piece, and the screw jack are correctly aligned.

See technical pages for the table of screw

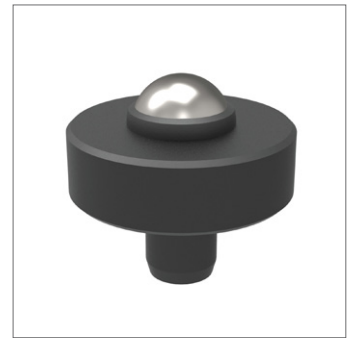
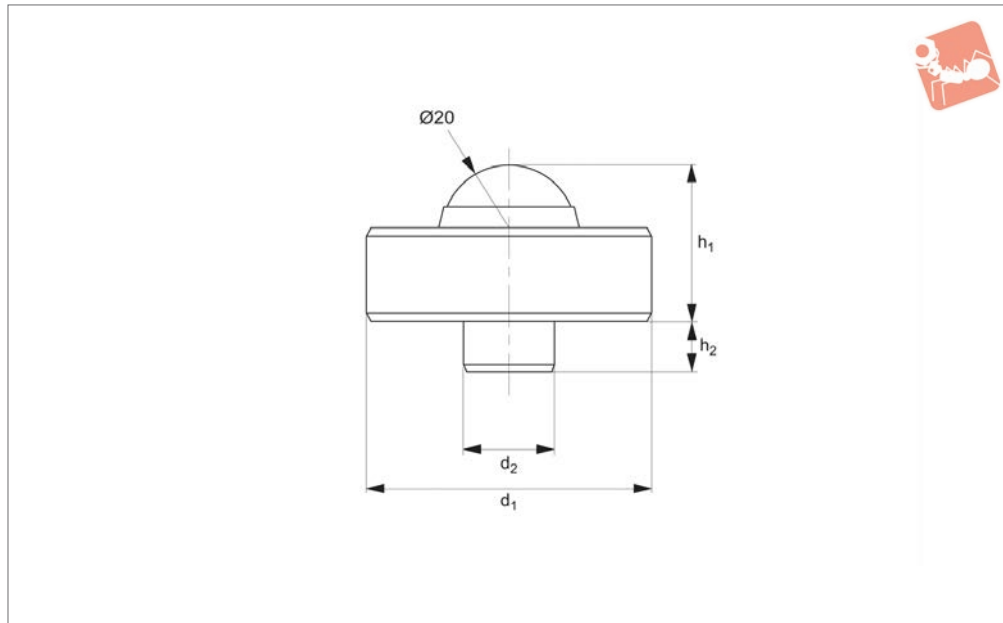
jack suitability.

Order No.	For screw jack	d_1	d_2	l_1	l_2	Weight g
15080.W0150	Sizes 52, 70, 100	50	12	32	8	399
15080.W0165	Sizes 140, 210	65	12	35	8	715



Locating Pad - Pivot Ball for screw jacks

Screw Jacks



15090

SCREW JACKS

Material

Pad: steel, tempered.
Ball: steel, hardened.

Technical Notes

Designed for use with screw jacks and for

supporting heavy duty cast iron and forged parts.

Tips

The pivot ball minimizes the friction on the support. The use of a point-like support

reduces the transmission of the turning force generated by the machine spindle. See technical pages for the table of screw jack suitability.

Order No.	d_1	d_2	h_1	h_2	Static load kN max.	Weight g
15090.W0030	45	12	25	8	30	240

