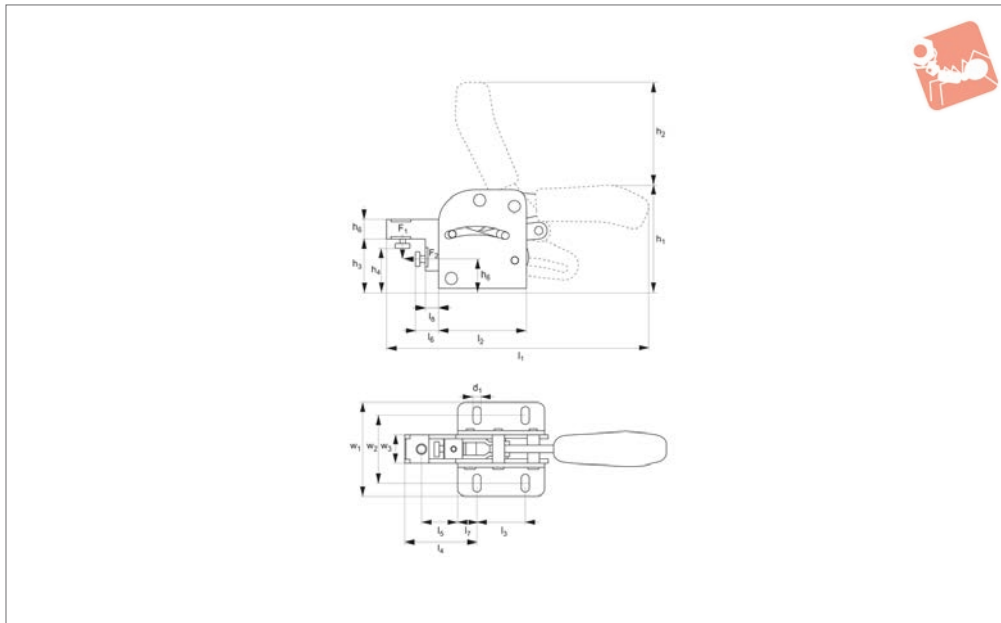




# Combination Toggle Clamp

position and clamp

# Auto-Adjust Toggle Clamps



**42500**

AUTO-ADJUST TOGGLE CLAMPS

**Material**

Body: steel, zinc plated.  
Rivets: stainless steel running in hardened bushes. Pre-lubricated bearings (grease suitable for food industry use).

Ergonomic, soft feel and oil-resistant handle with large grip area.

**Technical Notes**

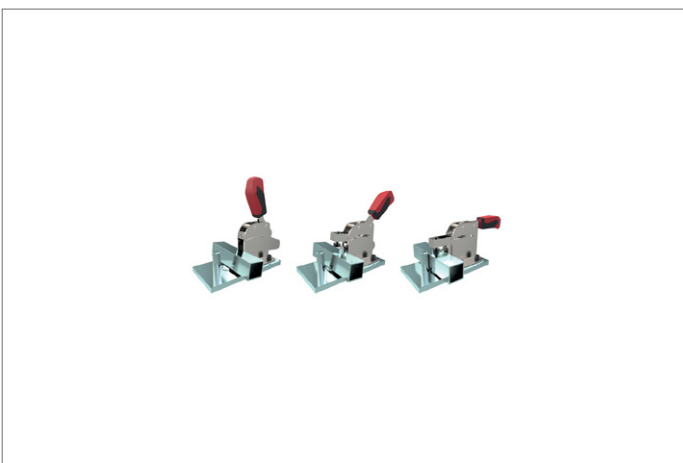
Especially useful in welding applications.

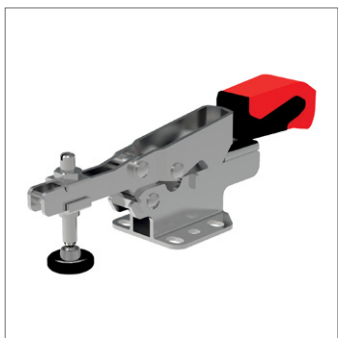
The positioning rod and toggle clamp achieve precise positioning and clamping of components in one operation.  
Temperature range -10°C to +80°C.

Order No.	Size	F <sub>1</sub> kN	F <sub>2</sub> kN	d <sub>1</sub>	h <sub>1</sub>	h <sub>2</sub>	h <sub>3</sub>	h <sub>4</sub> min.	h <sub>4</sub> max.	h <sub>5</sub>	h <sub>6</sub>	l <sub>1</sub>	Weight g
42500.W0001	1	1.0	1.0	5.5	74	62	36.0	25	32	22	12	150	340
42500.W0002	2	2.0	2.0	6.5	94	87	46.0	30	40	28	16	219	700
42500.W0003	3	3.0	3.0	8.5	110	106	55.5	40	50	34	20	270	1620

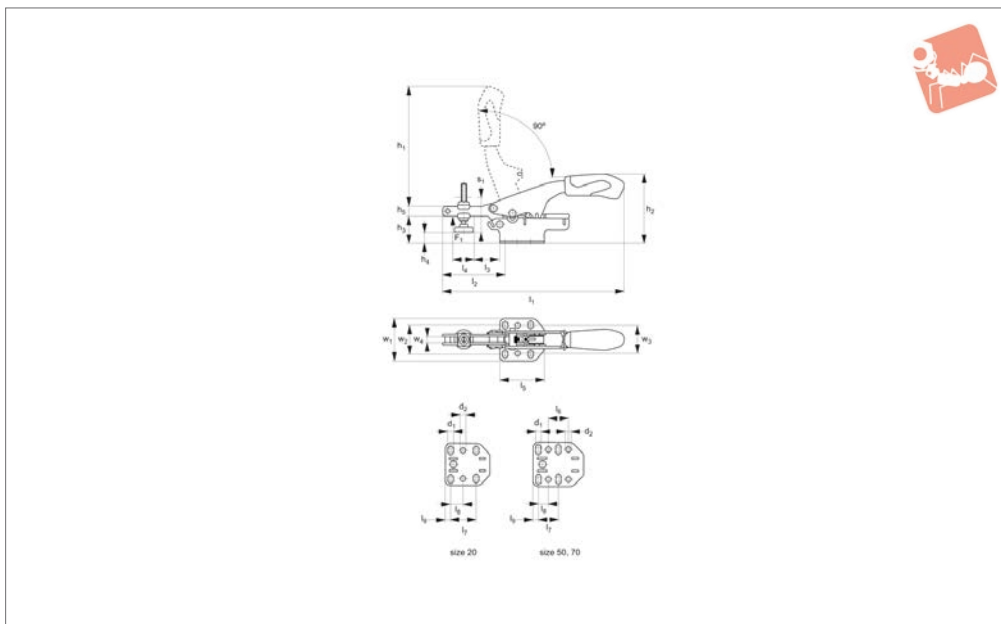
  

Order No.	l <sub>2</sub>	l <sub>3</sub>	l <sub>4</sub>	l <sub>5</sub>	l <sub>6</sub> min.	l <sub>6</sub> max.	l <sub>7</sub>	l <sub>8</sub>	w <sub>1</sub>	w <sub>2</sub>	w <sub>3</sub>
42500.W0001	55	40	33	15	5	10	7.5	0.5	53	34,5-39,5	17.0
42500.W0002	75	50	56	32	14	24	12.5	9.0	75	48,5-61,5	19.5
42500.W0003	90	50	74	37	20	30	20.0	14.0	96	60,0-80,0	29.0





## 42605



### Material

Body: steel, zinc plated.  
Ergonomic soft feel oil-resistant handle with large grip area.

Supplied complete with zinc-plated clamping screw (with rubber pad).

### Technical Notes

Automatically adjusts to suit workpiece height.

Order No.	Size	F <sub>1</sub> kN	Automatic height compensation s <sub>1</sub>	d <sub>1</sub>	d <sub>2</sub>	h <sub>1</sub>	h <sub>2</sub>	h <sub>3</sub>	h <sub>4</sub> min.	h <sub>4</sub> max.	h <sub>5</sub>	Weight g
42605.W0020	20	2	20	5.5	5.5	121	70	27	-7.0	11.0	10	345
42605.W0050	50	3	35	6.5	6.5	174	72	23	-8.9	1.5	13	520
42605.W0070	70	3	35	6.5	6.5	174	90	41	-6.6	19.7	13	575

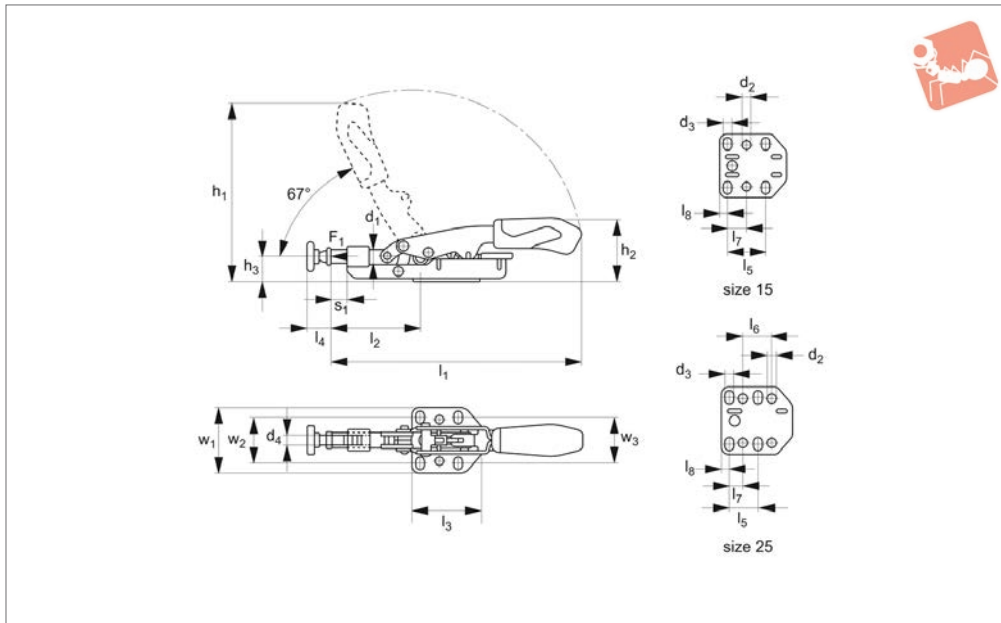
Order No.	l <sub>1</sub>	l <sub>2</sub>	l <sub>3</sub>	l <sub>4</sub>	l <sub>5</sub>	l <sub>6</sub>	l <sub>7</sub>	l <sub>8</sub>	l <sub>9</sub>	w <sub>1</sub>	w <sub>2</sub>	w <sub>3</sub>	w <sub>4</sub>	Clamping screw	Height compensation max.
42605.W0020	184	63	22.0	26.0	45.0	-	26.0	12.7	5.3	42.5	26-32	28	6.1	M 6x49	35
42605.W0050	261	104	35.2	22.2	63.5	25.4	25.4	12.7	6.3	57.0	32-44	38	8.4	M 8x50	40
42605.W0070	261	104	35.0	50.0	63.5	25.4	25.4	12.7	6.3	57.0	32-44	38	8.5	M 8x66	60



# Auto-Adjust Push-Pull Toggle Clamp

horizontal base

# Auto-Adjust Toggle Clamps



**42613**

AUTO-ADJUST TOGGLE CLAMPS

### Material

Body: steel, zinc plated.  
Ergonomic, soft feel and oil-resistant handle with large grip area.

Supplied complete with zinc plated clamping screw (with rubber pad).

### Technical Notes

Automatically adjusts to suit work-piece height.  
Temperature range -10°C to +80°C.

Order No.	Size	F <sub>1</sub> kN	Automatic height compensation s <sub>1</sub>		d <sub>1</sub>	d <sub>2</sub>	d <sub>3</sub>	d <sub>4</sub>	h <sub>1</sub>	h <sub>2</sub>	h <sub>3</sub>	Weight g
<b>42613.W0015</b>	15	2	8		8.5	5.5	5.5	M 6	145	58	16.8	230
<b>42613.W0025</b>	25	3	13		11.8	6.5	6.5	M 8	207	71	23.2	550

Order No.	l <sub>1</sub>	l <sub>2</sub>	l <sub>3</sub>	l <sub>4</sub> min.	l <sub>4</sub> max.	l <sub>5</sub>	l <sub>6</sub>	l <sub>7</sub>	l <sub>8</sub>	w <sub>1</sub>	w <sub>2</sub>	w <sub>3</sub>	Clamping screw	Height compensation max.
<b>42613.W0015</b>	177	52-69	45.0	13	25	26.0	-	12.7	5.3	42.5	26-32	28	M 6x37	25
<b>42613.W0025</b>	256	72-98	63.5	16	35	25.4	25.4	12.7	6.3	57.0	32-44	38	M 8x50	35

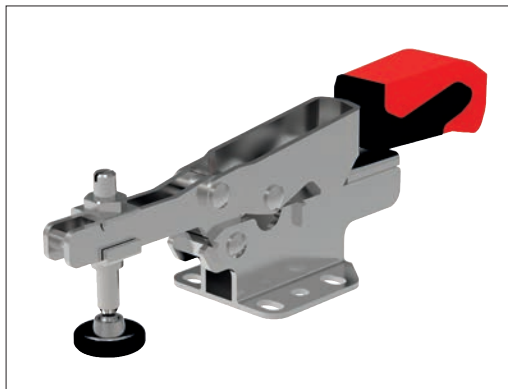


### Benefits

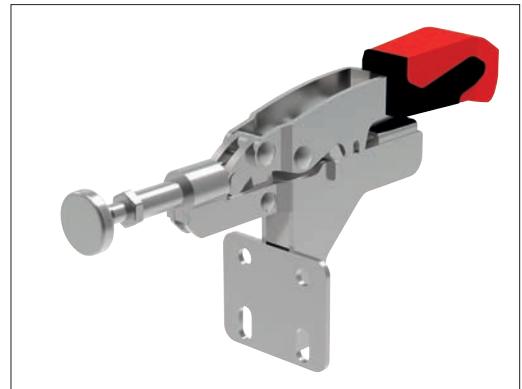
- Automatically adapts to workpiece height / width.
- Ideal for small batch sizes.
- Adjustable clamping forces.



### Example Toggle Clamps



42605 - Horizontal base - vertical acting



42611 - Push pull type - horizontal acting