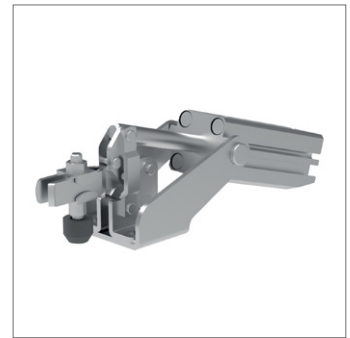
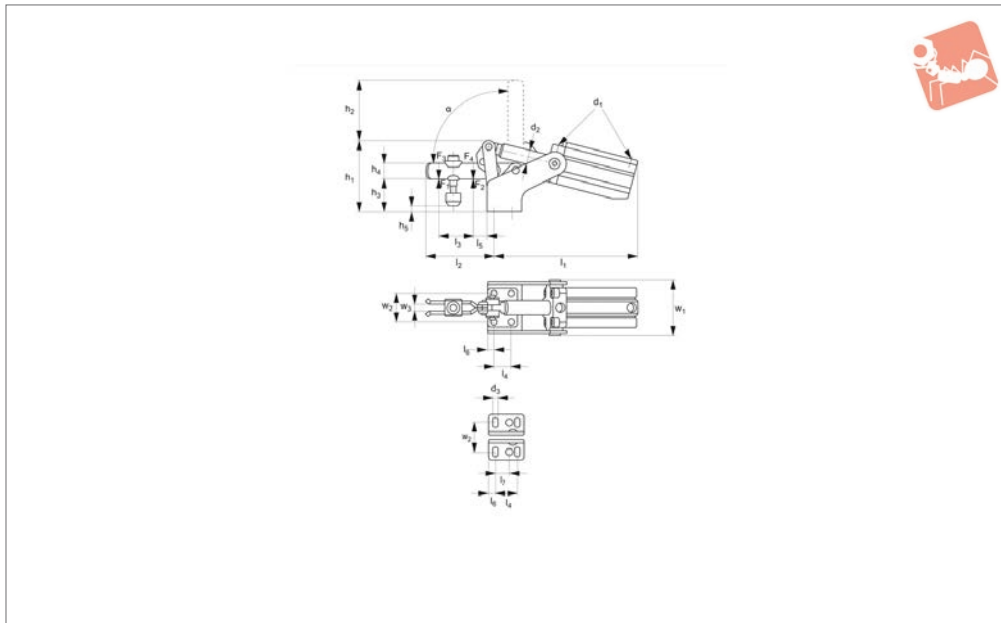




Pneumatic Toggle Clamp with horizontal cylinder attachment

Pneumatic Toggle Clamps



47010

PNEUMATIC TOGGLE CLAMPS

Material

Body: steel, zinc plated and galvanised.
Bushes: case hardened and greased.
Rivets: stainless steel.
Complete with tempered, galvanized clamping screw.

Technical Notes

Bearings are pre-lubricated.
Clamp ready for installation and consists of:

- vertical toggle clamp no. 40000 (without handle)
- FESTO-pneumatic cylinder, double acting.

F_3 and F_4 = max. clamping force at 6 bar.
piston \emptyset^* = required piston dia. to achieve force F_5 at 6 bar.

V_n = air consumption per double stroke in dm^3 at 6 bar.

Suitable proximity switches for end-

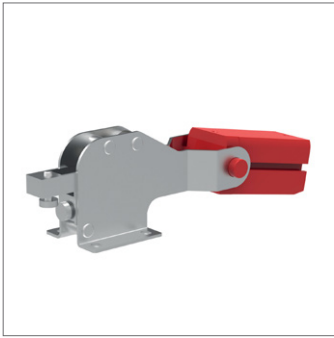
position monitoring are available using order 45001. 0.3m PUR cable with M8 connector and rotatable knurled nuts.
Switching function: NOC.
Output: PNP.

Tips

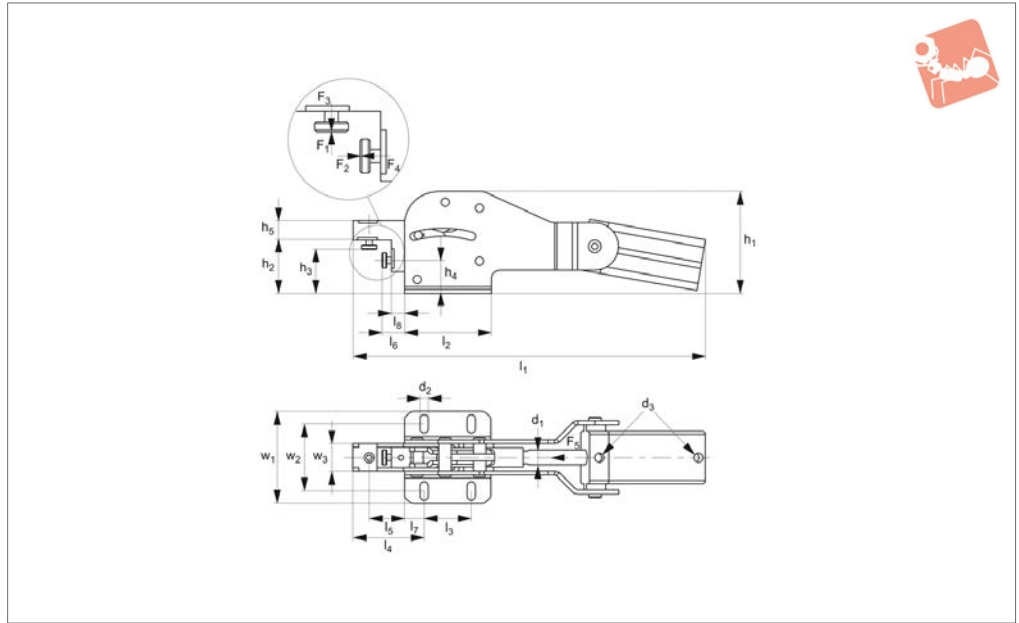
The console is self-supporting and must be clear of other surfaces. There is a valve for controlling the speed of operation.

Order No.	Size	F_1 kN	F_2 kN	F_3 kN	F_4 kN	Clamping screw	Piston dia.	d_1	d_2	d_3	h_1	h_2	Weight g
47010.W0001	1	0.8	1.1	0.2	0.3	M 5x30	16	M 5	8	4.5	51.0	34.0	320
47010.W0002	2	1.0	1.2	0.7	1.0	M 6x35	25	M 5	12	5.5	62.0	42.5	600
47010.W0003	3	1.0	2.5	0.7	1.1	M 8x45	32	G1/8	16	7.5	82.0	69.0	1005
47010.W0004	4	2.0	3.0	1.5	2.2	M 8x65	40	G1/8	16	8.6	99.5	92.0	1520

Order No.	h_3	h_4	h_5 min.	h_5 max.	l_1	l_2	l_3	l_4	l_5	l_6	l_7	Opening angle α	V_n dm^3	w_1	w_2	w_3
47010.W0001	21.0	10	-2.0	4.5	126.0	39.0	18	16	6	6.0	-	92,0°	0.1	50.0	24	5
47010.W0002	26.0	12	-1.0	7.0	145.0	51.5	25	20	11	6.0	12.5	91,5°	0.3	54.5	27	6
47010.W0003	36.5	18	5.4	14.0	165.5	78.0	36	20	19	7.5	-	90,0°	0.4	62.5	32	8
47010.W0004	45.0	20	-3.0	25.5	196.0	101.0	45	32	25	13.0	-	90,5°	0.8	77.5	45	10



47030



Material

Body: steel, zinc plated and galvanised.
 Bushes: case hardened and greased.
 Rivets: stainless steel.
 Complete with tempered, galvanized clamping screw.

Technical Notes

Bearings are pre-lubricated.
 Clamp ready for installation and consists

of:

- vertical toggle clamp no. 40000 (without handle)
 - FESTO-pneumatic cylinder, double acting.
- With magnetic piston for limit position query.
 F_3 and F_4 = max. clamping force at 6 bar.
 V_n = air consumption per double stroke in dm^3 at 6 bar.

Suitable proximity switches for end-position monitoring are available using order 45001. 0.3m PUR cable with M8 connector and rotatable knurled nuts.
 Switching function: NOC. Output: PNP.

Tips

The console is self-supporting and must be clear of other surfaces. There is a valve for controlling the speed of operation.

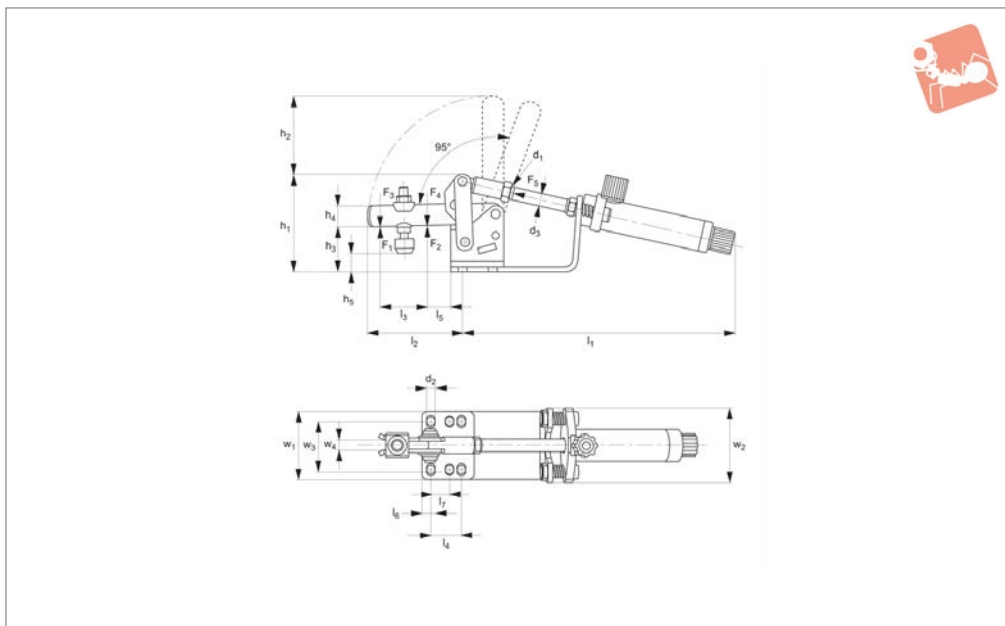
Order No.	Size	F_1/F_2 kN	F_3 kN	F_4 kN	F_5 kN	Piston dia.	d_1	d_2	d_3	h_1	h_2	h_3 min.	h_3 max.	h_4	Weight g
47030.W0001	1	1	0.3	0.1	0.3	25	5.5	10	M 5	68	36.0	25	32	22	770
47030.W0002	2	2	0.5	0.3	0.4	32	6.5	12	G1/8	88	46.0	30	40	28	1450
47030.W0003	3	3	0.7	0.4	0.8	40	8.5	16	G1/8	106	55.5	40	50	34	3050

Order No.	h_5	l_1	l_2	l_3	l_4	l_5	l_6 min.	l_6 max.	l_7	l_8	V_n dm^3	w_1	w_2	w_3
47030.W0001	12	225	55	40	33	15	5	10	7.5	0.5	0.3	53	34,5-39,5	17.0
47030.W0002	16	305	75	50	56	32	10	20	12.5	10.5	0.4	75	55.0	19.5
47030.W0003	20	370	90	50	74	37	20	30	20.0	14.0	0.8	96	70.0	29.0



Pneumatic Toggle Clamp with horizontal cylinder attachment

Pneumatic Toggle Clamps



47040

PNEUMATIC TOGGLE CLAMPS

Material

Body: steel, zinc plated and galvanised.
Bushes: case hardened and greased.
Rivets: stainless steel.
Complete with tempered, galvanized clamping screw.

Technical Notes

Bearings are pre-lubricated.

Clamp ready for installation and consists of:

- vertical toggle clamp no. 40000 (without handle)
- Plastic pneumatic cylinder, double acting.

F_3 and F_4 = max. clamping force at 6 bar.

V_n = air consumption per double stroke in dm^3 at 6 bar.

Tips

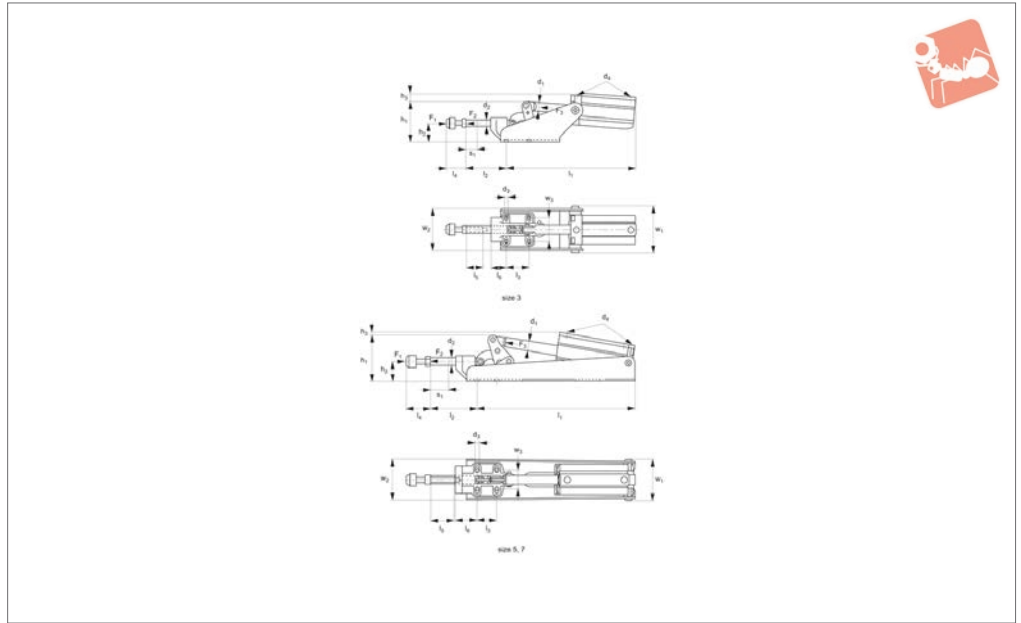
The console is self-supporting and must be clear of other surfaces. There is a valve for controlling the speed of operation.

Order No.	Size	F_1 kN	F_2 kN	F_3 kN	F_4 kN	F_5 kN	Clamping screw	d_1	d_2	d_3	h_1	h_2	h_3	Weight g
47040.W0000	0	0.5	0.7	0.07	0.09	38	M 4x25	M 4	4.5	4	46	23.0	20	125
47040.W0001	1	0.8	1.1	0.13	0.18	60	M 5x30	M 6	4.5	6	50	34.5	22	400
47040.W0002	2	1.0	1.2	0.35	0.50	170	M 6x35	M 8	5.4	8	63	42.5	27	600
47040.W0003	3	1.4	2.5	0.55	1.00	265	M 8x45	M10x1,25	7.1	10	64	69.0	38	800

Order No.	h_4	h_5 min.	h_5 max.	l_1	l_2	l_3	l_4	l_5	l_6	l_7	V_n dm^3	w_1	w_2	w_3	w_4
47040.W0000	8	-1	6	132	31	14	13.5	5.5	5.0	-	0.03	33	29	23	4
47040.W0001	10	-2	5	145	38	18	16.0	6.0	6.0	-	0.06	34	33	24	5
47040.W0002	12	1	8	163	52	25	20.0	11.0	6.0	12.5	0.17	44	54	27	6
47040.W0003	18	7	16	205	78	37	20.0	19.0	7.5	-	0.30	50	59	32	8



47050



Material

Console: steel, zinc plated.
 Clamp body: malleable iron casting, painted.
 Lever parts and push rod: zinc plated, passivated and tempered.
 Rivets: stainless steel.

Bearing positions are greased. Pneumatic cylinder with magnetic piston for end-position monitoring. Complete with zinc plated and tempered clamping screw no. 45020.

Technical Notes

Heavy duty version for long working life. Suitable proximity switches for end-position monitoring are available using order 45001. 0.3 m PUR cable with M8 connector and rotatable knurled nuts. Switching function: NOC. Output: PNP.

Order No.	F ₁ kN	F ₂ kN	F ₃ kN	Clamping screw	Piston dia.	d ₁	d ₂	d ₃	d ₄	h ₁	h ₂	h ₃	Weight g
47050.W0003	4	2.5	0.75	M 8 x 35	40	16.0	12	6.5	G1/8	72	33	22	2610
47050.W0005	10	5.0	1.00	M12 x 50	50	20.0	16	8.5	G1/4	96	41	22	5265
47050.W0007	25	10.0	1.80	M12 x 50	63	20.0	22	11.0	G1/4	128	59	29	6120

Order No.	l ₁	l ₂	l ₃	l ₄ min.	l ₄ max.	l ₅	l ₆	Stroke s ₁	Vn dm ³	w ₁	w ₂	w ₃
47050.W0003	232	72	41	21.5	35	30	28	20	0.8	83	73.5	41
47050.W0005	316	98	41	30.0	50	30	45	29	2.2	86	84.0	41
47050.W0007	422	105	70	30.0	50	50	45	38	4.5	93	114.0	57

